

HI-ILS or LOC RWY 5L

LOC I-TYS 110.3	APCH CRS 051°	Rwy ldg TDZE Arprt Elev 9508 953 986	[USAF]	MC GHEE TYSON (KTYS)
---------------------------	-------------------------	--	--------	----------------------

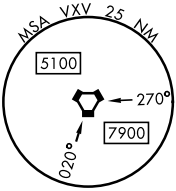
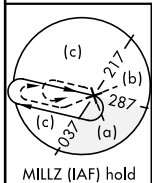
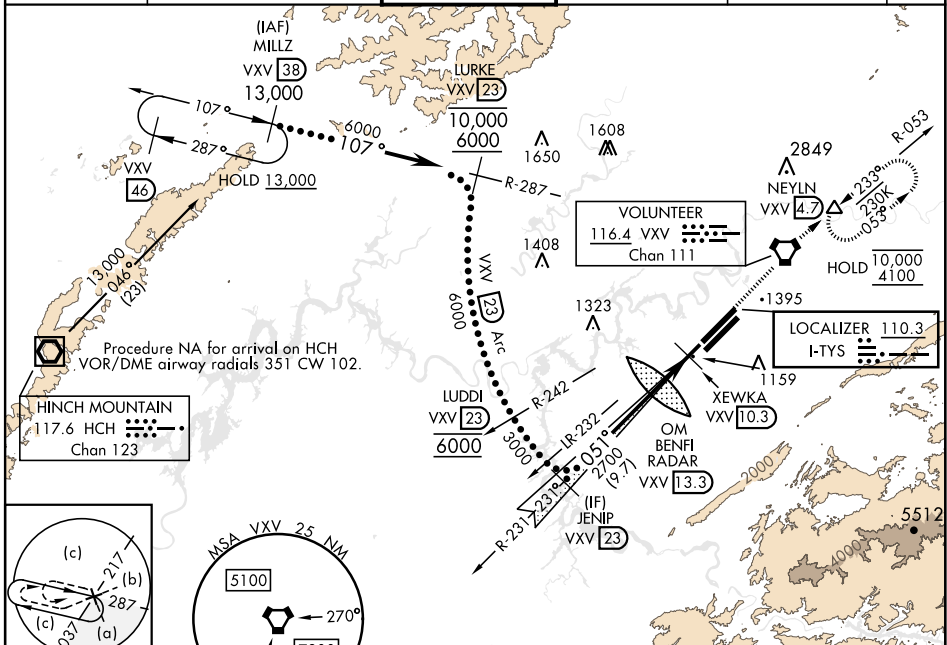
DME required

▲ *When ALS inop, increase CAT E vis to 3/4 mile.
****** When ALS inop, increase CAT E vis to 1 1/8 miles.

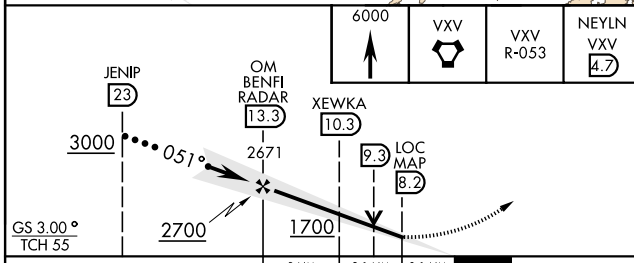
MALSR **A5**

MISSED APPROACH: Climb to 6000 direct to VXV VORTAC and on VXV R-053 to NEYLN/VXV 4.7 DME and hold, continue climb-in-hold to 6000.

ATIS 128.35	KNOXVILLE APP CON 123.9 360.8	KNOXVILLE TOWER 121.2 257.8	GND CON 121.9 348.6	CLNC DEL 121.65	ASR
-----------------------	---	---------------------------------------	-------------------------------	---------------------------	-----

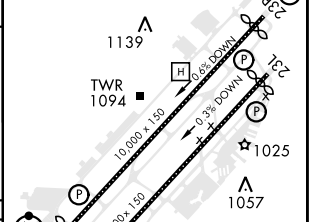


EMERG SAFE ALT 100 NM 8900



ELEV 986	TDZE 953
----------	----------

Rwy 05L ldg 9508'
 Rwy 05R ldg 8600'
 Rwy 23L ldg 8600'
 Rwy 23R ldg 9495'
 HIRL Rwy 5R-23L, 5L-23R
 REIL Rwy 5R-23L
 TDZL/CL Rwy 5R, 23R



CATEGORY	C	D	E
S-ILS 5L *	1153-1/2	200 (200-1/2)	
S-LOC 5L **	1500-1 1/8	547 (600-1 1/8)	
CIRCLING	1660-2 674 (700-2)	1900-3	914 (1000-3)

HI-ILS or LOC RWY 5L

SE-1, 31 OCT 2024 to 28 NOV 2024

SE-1, 31 OCT 2024 to 28 NOV 2024