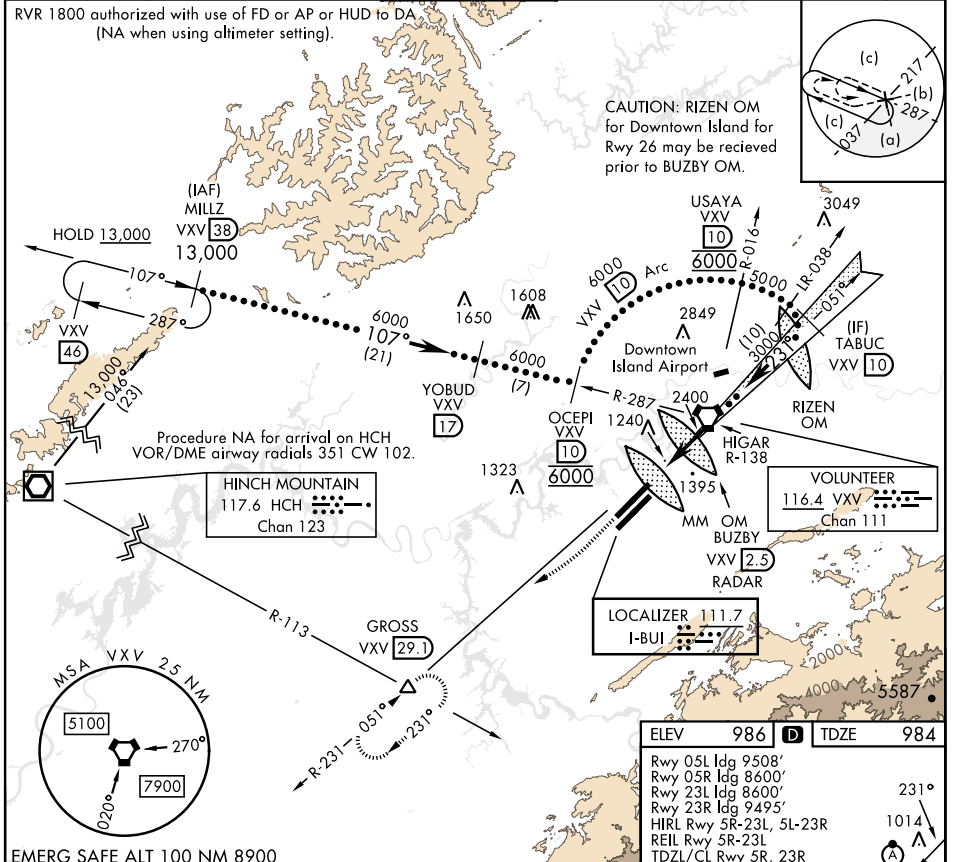


# HI-ILS or LOC RWY 23R

LOC I-BUI <b>111.7</b>	APCH CRS <b>231°</b>	Rwy ldg TDZE Arprt Elev <b>9495</b> <b>984</b> <b>986</b>	[USAF]	MC GHEE TYSON (KTYS)
DME required		ALSF-2	MISSED APPROACH: Climb to 2000 then dimbing right turn to 4000 on heading 240° and VXV VORTAC R-231 to GROSS/VXV 29.1 DME and hold.	
*When ALS inop, increase CAT E RVR to 40, vis to ¾ mile. **When ALS inop, increase vis to 1½ miles.				

ATIS <b>128.35</b>	KNOXVILLE APP CON <b>123.9 360.8</b>	KNOXVILLE TOWER <b>121.2 257.8</b>	GND CON <b>121.9 348.6</b>	CLNC DEL <b>121.65</b>	ASR
-----------------------	---	---------------------------------------	-------------------------------	---------------------------	-----



EMERG SAFE ALT 100 NM 8900

2000	4000	GROSS VXV 29.1
↑	hdg 240°	

6.6	5	2.5	231°	5000
0.3	3.8 NM			

CATEGORY	C	D	E
S-ILS 23R *	1184/1800	200	(200-½)
S-LOC 23R **	1560-1¼	576	(600-1¼)
CIRCLING	1660-2 674 (700-2)	1900-3	914 (1000-3)

ELEV	986	TDZE	984
------	-----	------	-----

Rwy 05L ldg 9508'  
 Rwy 05R ldg 8600'  
 Rwy 23L ldg 8600'  
 Rwy 23R ldg 9495'  
 HIRL Rwy 5R-23L, 5L-23R  
 REIL Rwy 5R-23L  
 TDZL/CL Rwy 5R, 23R

# HI-ILS or LOC RWY 23R

SE-1, 31 OCT 2024 to 28 NOV 2024

SE-1, 31 OCT 2024 to 28 NOV 2024