

TACAN NQX Chan 78	APCH CRS 072°	Rwy ldg 10,001 TDZE 4 Arprt Elev 6
-----------------------------	-------------------------	---

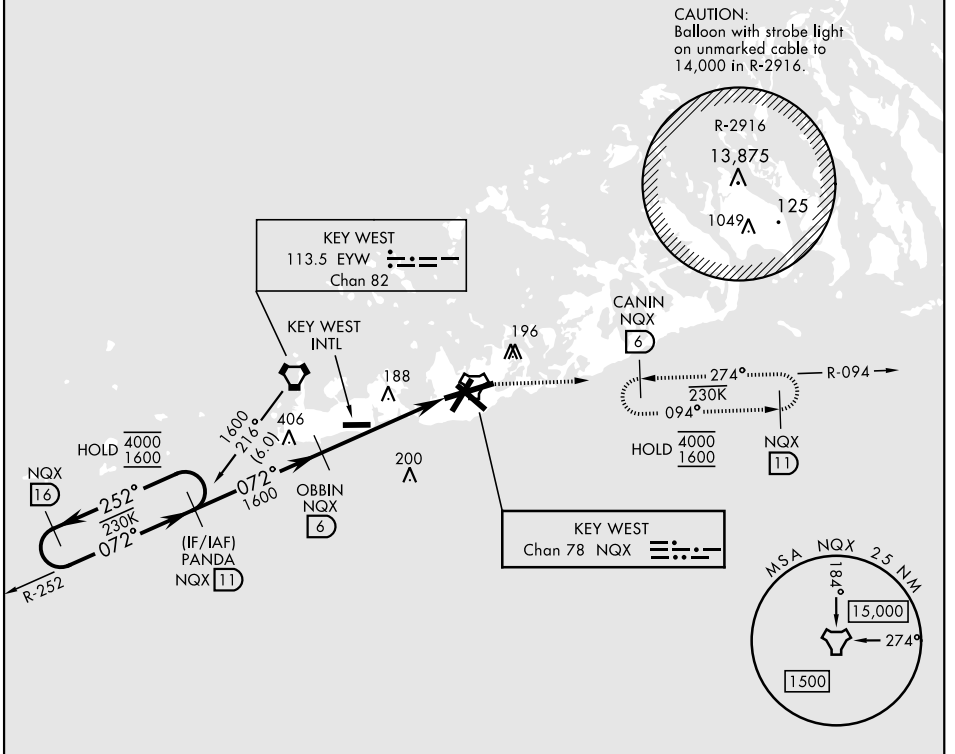
AL-214 [USN] KEY WEST NAS (BOCA CHICA FLD) (KNQX)

▼ * When ALS inop, increase CAT AB vis to 1 mile, CAT CD vis to 1 1/4 miles.

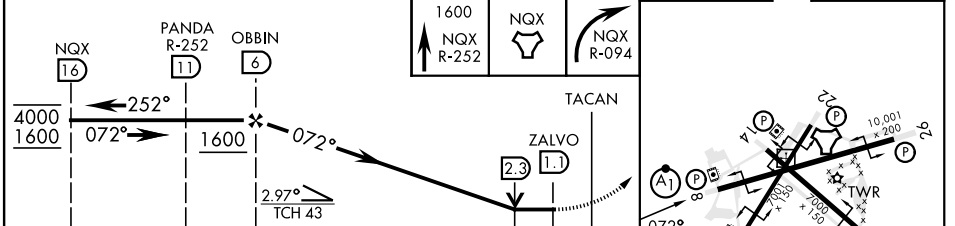
MISSED APPROACH: Climb to 1600 via R-252 to NQX TACAN then via R-094 to CANIN (NQX R-094/6 DME) and hold.

ATIS * 307.025	NAVY KEY WEST APP CON 124.025 313.7	NAVY KEY WEST TOWER * 118.575 340.25	GND CON 121.7 336.45	CLNC DEL 121.2 357.4	ASR/PAR
--------------------------	---	--	--------------------------------	--------------------------------	---------

CAUTION: Short Intermediate Segment



EMERG SAFE ALT 100 NM 15,000



CATEGORY	A	B	C	D
S-8 *	440-1/2	436 (500-1/2)	440-3/4	436 (500-3/4)
CIRCLING	440-1 434 (500-1)	500-1 494 (500-1)	500-1 1/2 494 (500-1 1/2)	560-2 554 (600-2)

ELEV 6 TDZE 4

HIRL all rwys