

KEY WEST, FLORIDA

TACAN Y RWY 4

TACAN Chan 78	APCH CRS 044°	Rwy Idg TDZE Arprt Elev	7001 4 6
-------------------------	-------------------------	-------------------------------	-------------------------------------

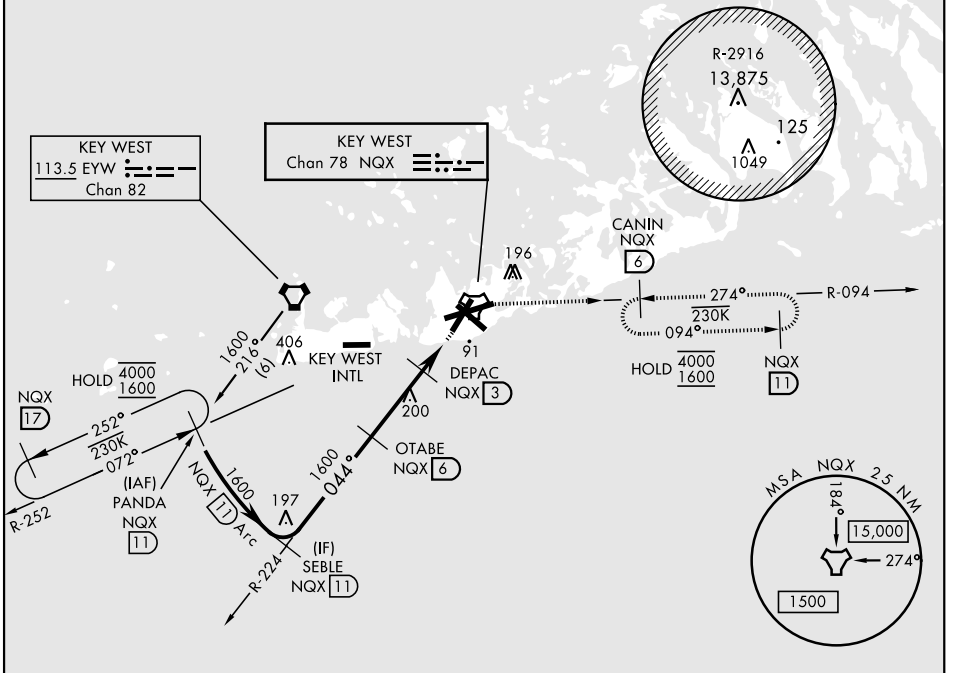
AL-214 [USN] KEY WEST NAS (BOCA CHICA FLD) (KNQX)

ATIS ★ 307.025		NAVY KEY WEST APP CON 124.025 313.7		NAVY KEY WEST TOWER ★ 118.575 340.25		GND CON 121.7 336.45		CLNC DEL 121.2 357.4		ASR/PAR	
---------------------------------	--	---	--	--	--	--------------------------------	--	--------------------------------	--	---------	--

MISSED APPROACH: Climb to 1600 via NXQ TACAN R-224 to NXQ, then via NXQ R-094 to CANIN and hold.

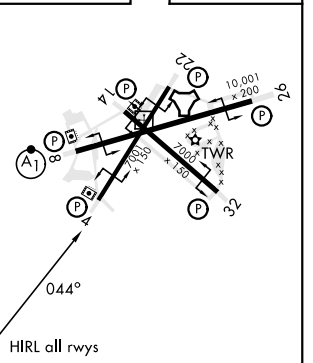
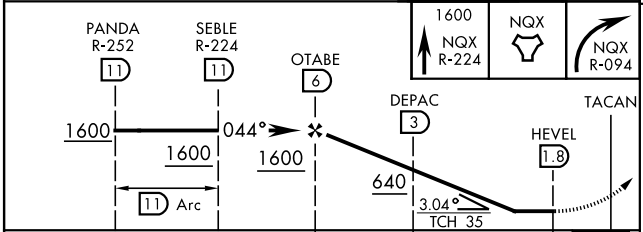
CAUTION: Short Intermediate Segment

CAUTION: Balloon with strobe light on unmarked cable to 14,000 in R-2916.



EMERG SAFE ALT 100 NM 15,000

ELEV 6	TDZE 4
--------	--------



CATEGORY	A	B	C	D
S-4		360-1	356	(400-1)
CIRCLING	440-1 434 (500-1)	500-1 494 (500-1)	500-1½ 494 (500-1½)	560-2 554 (600-2)

HIRL all rwys

KEY WEST, FLORIDA
Orig 23FEB23

24°34'N-81°41'W KEY WEST NAS (BOCA CHICA FLD) (KNQX)

TACAN Y RWY 4

SE-3, 31 OCT 2024 to 28 NOV 2024

SE-3, 31 OCT 2024 to 28 NOV 2024