

KEY WEST, FLORIDA

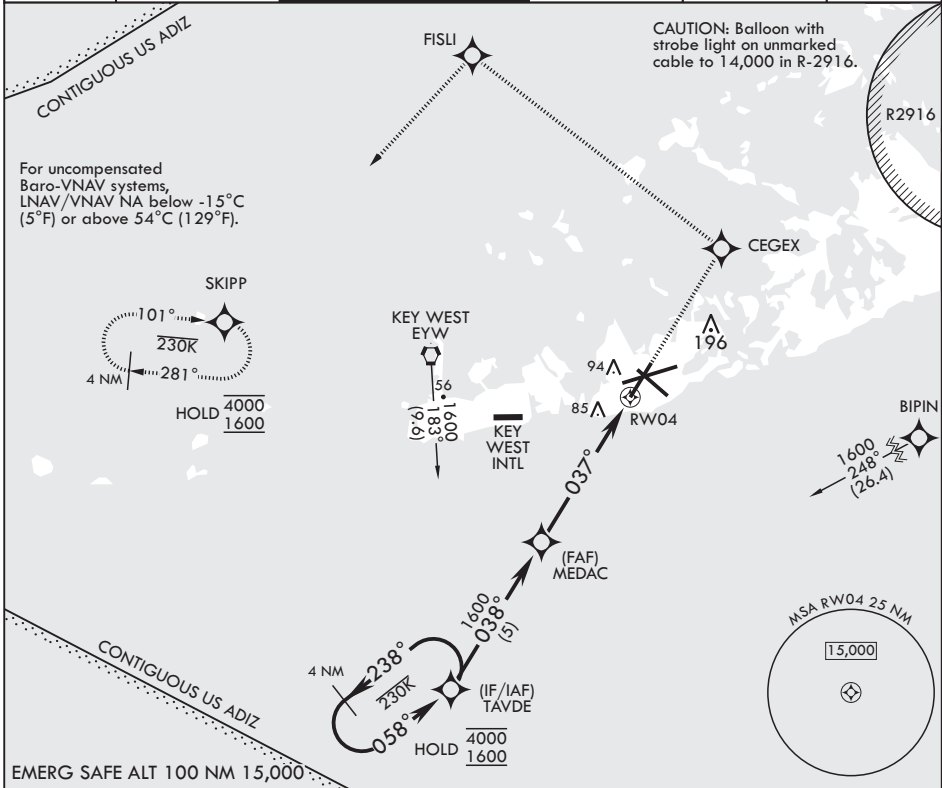
# RNAV (GPS) RWY 4

AL-214 (USN) KEY WEST NAS (BOCA CHICA FLD) (KNQX)

APCH CRS 037°	Rwy Idg TDZE Arprt Elev	7001 4 6
------------------	-------------------------------	----------------

RNP APCH	MISSED APPROACH: (Do not exceed 230 KIAS until CEGEX.) Climb to 1600 direct CEGEX, track 314° to FISLI, track 229° to SKIPP and hold.
RADAR required	

ATIS★ 307.025	APP CON 124.025 313.7	NAVY KEY WEST TOWER★ 118.575 340.25	GND CON 121.7 336.45	CLNC DEL 121.2 357.4	ASR/PAR
------------------	--------------------------	--	-------------------------	-------------------------	---------



4 NM Holding Pattern 4000 ← 238° 1600 → 058° GP 3.00° TCH 45	TAVDE	MEDAC	1.3 NM to RW04	RW04	ELEV 6 TDZE 4
	← 038°	← 037°			
VGSI and RNAV glidepath not coincident (VGSI Angle 3.00/TCH 35).				1600 ↑ CEGEX	
CATEGORY	A	B	C	D	
LNAV/VNAV DA	245-¾		250	(300-¾)	
LNAV MDA	460-1	456 (500-1)	460-1½	456 (500-1%)	
CIRCLING	460-1 454 (500-1)	500-1 494 (500-1)	500-1½ 494 (500-1½)	560-2 554 (600-2)	

KEY WEST, FLORIDA  
Amdt 2 23FEB23

24°34'N - 81°41'W

KEY WEST NAS (BOCA CHICA FLD) (KNQX)

# RNAV (GPS) RWY 4

SE-3, 03 OCT 2024 to 31 OCT 2024

SE-3, 03 OCT 2024 to 31 OCT 2024