

KEY WEST, FLORIDA

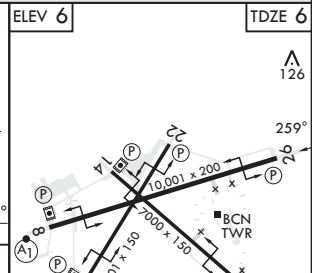
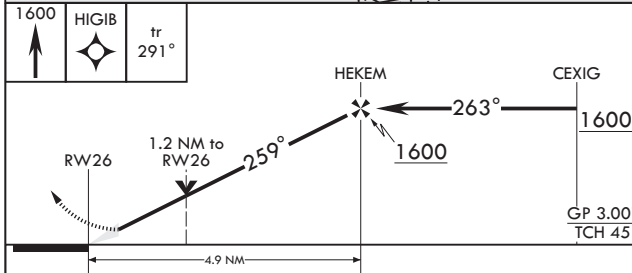
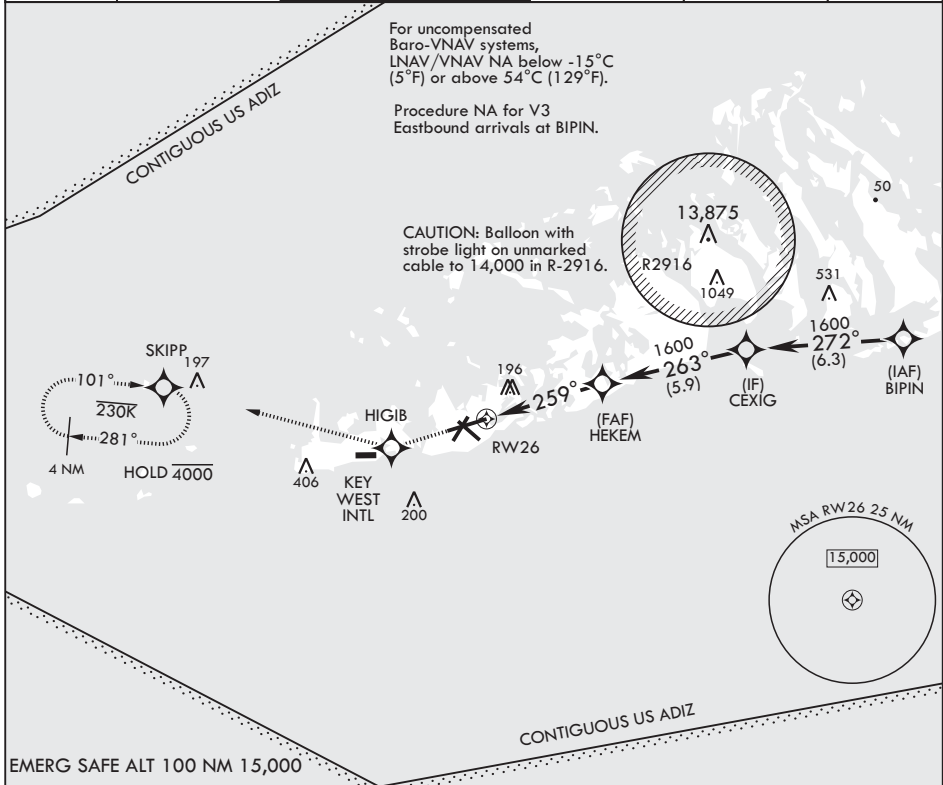
# RNAV (GPS) RWY 26

APCH CRS	Rwy Idg	10,001
259°	TDZE	6
	Arprt Elev	6

AL-214 (USN) KEY WEST NAS (BOCA CHICA FLD) (KNQX)

RNP APCH	MISSED APPROACH: Climb to 1600 direct HIGIB, track 291° to SKIPP and hold.
----------	----------------------------------------------------------------------------

ATIS★ 307.025	APP CON 124.025 313.7	NAVY KEY WEST TOWER★ 118.575 340.25	GND CON 121.7 336.45	CLNC DEL 121.2 357.4	ASR/PAR
------------------	--------------------------	----------------------------------------	-------------------------	-------------------------	---------



CATEGORY	A	B	C	D
LNAV/VNAV DA	291-7/8 285 (300-7/8)	302-7/8 296 (300-7/8)	310-7/8 304 (400-7/8)	321-7/8 315 (400-7/8)
LNAV MDA	420-1 414 (500-1)	414 408 (500-1)	420-1 1/2 414 (500-1 1/2)	414 408 (500-1 1/2)
CIRCLING	440-1 434 (500-1)	500-1 494 (500-1)	500-1 1/2 494 (500-1 1/2)	560-2 554 (600-2)

ELEV 6	TDZE 6
--------	--------

GP 3.00°  
TCH 45

HIRL all Rwys

KEY WEST, FLORIDA  
Amdt 2 23FEB23

24°34'N - 81°41'W

KEY WEST NAS (BOCA CHICA FLD) (KNQX)

# RNAV (GPS) RWY 26

SE-3, 31 OCT 2024 to 28 NOV 2024

SE-3, 31 OCT 2024 to 28 NOV 2024