

KEY WEST, FLORIDA

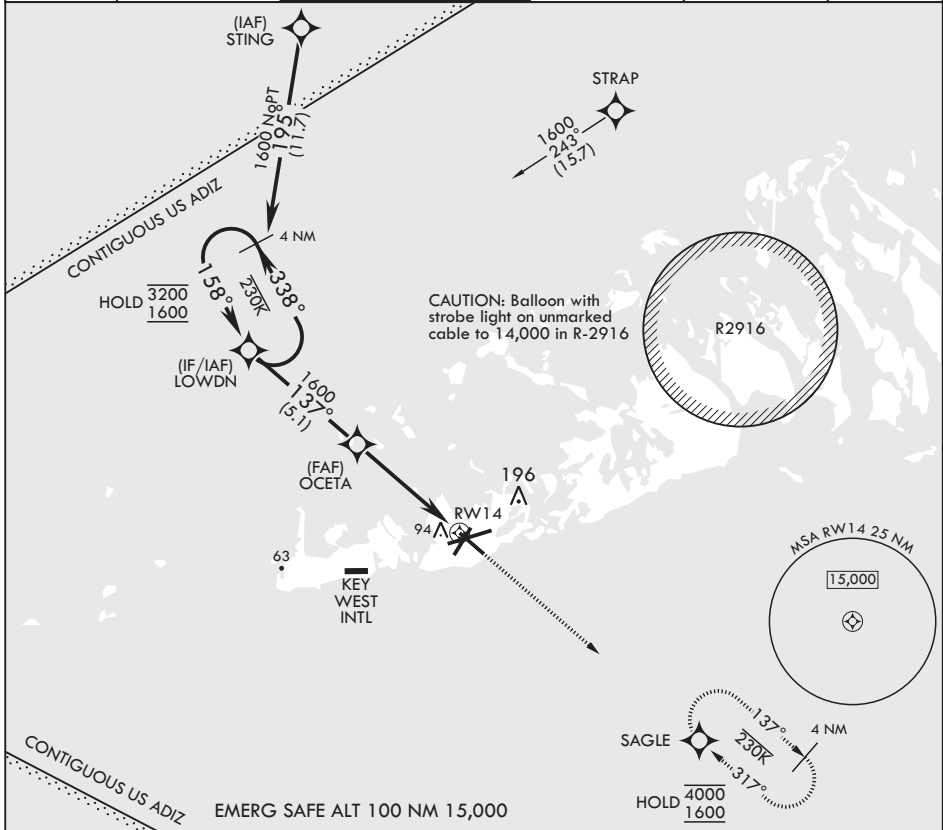
# RNAV (GPS) RWY 14

APCH CRS	Rwy Idg	7000
137°	TDZE	4
	Arprt Elev	6

AL-214 (USN) KEY WEST NAS (BOCA CHICA FLD) (KNQX)

RNP APCH MISSED APPROACH: Climb to 1600 direct SAGLE and hold.

ATIS*	APP CON	NAVY KEY WEST TOWER*	GND CON	CLNC DEL	ASR/PAR
307.025	124.025 313.7	118.575 340.25	121.7 336.45	121.2 357.4	



	1600	SAGLE	ELEV 6	TDZE 4
4 NM Holding Pattern	3200	1600	137°	127
LOWDN	158°	137°	22	20
OCETA	1600	1 NM to RW14	10,001 x 200	47
		3.01° TCH 45	7000 x 150	BCN TWR
		4.9 NM		
CATEGORY	A	B	C	D
LNAV MDA	380-1	376	(400-1)	
Ⓢ CIRCLING	440-1 434 (500-1)	500-1 494 (500-1)	500-1½ 494 (500-1½)	560-2 554 (600-2)

HIRL all Rwys

KEY WEST, FLORIDA

24°34'N - 81°41'W

KEY WEST NAS (BOCA CHICA FLD) (KNQX)

Amdt 2 23FEB23

# RNAV (GPS) RWY 14

SE-3, 31 OCT 2024 to 28 NOV 2024

SE-3, 31 OCT 2024 to 28 NOV 2024