

KEY WEST, FLORIDA

HI-TACAN Z RWY 32

TACAN NQX Chan 78	APCH CRS 335°	Rwy ldg TDZE 7000 4 Arprt Elev 6
--------------------------	----------------------	--

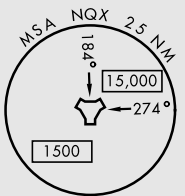
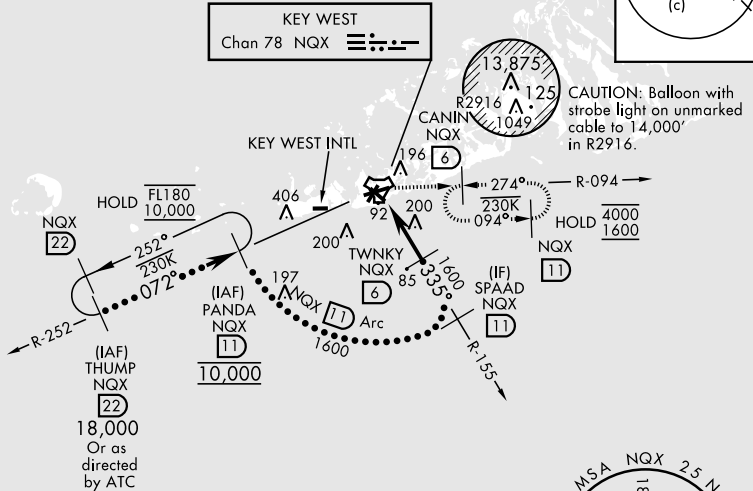
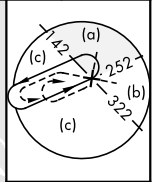
AL-214 [USN] KEY WEST NAS (BOCA CHICA FLD) (KNQX)

RADAR required

MISSED APPROACH: Climb to 1600 via NQX TACAN R-155 to NQX, then climbing right turn to CANIN and hold.

ATIS ★ 307.025	NAVY KEY WEST APP CON 124.025 313.7	NAVY KEY WEST TOWER ★ 118.575 340.25	GND CON 121.7 336.45	CLNC DEL 121.2 357.4	ASR/PAR
-----------------------	--	---	-----------------------------	-----------------------------	---------

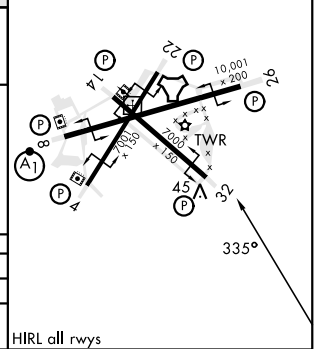
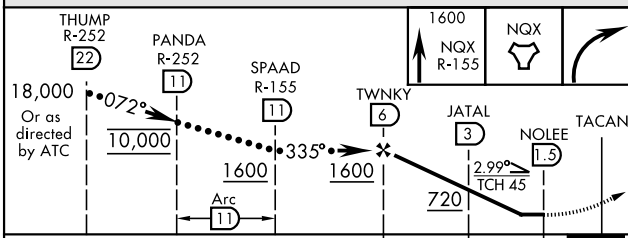
CAUTION: Short Intermediate Segment



CAUTION: Balloon with strobe light on unmarked cable to 14,000' in R2916.

EMERG SAFE ALT 100 NM 15,000

ELEV 6	TDZE 4
--------	--------



CATEGORY	C	D	E
S-32	360-1	356	(400-1)
CIRCLING	500-1½ 494 (500-1½)	560-2	554 (600-2)

HIRL all rwys

KEY WEST, FLORIDA

24°34'N-81°41'W

KEY WEST NAS (BOCA CHICA FLD) (KNQX)

Amdt 4 23FEB23

HI-TACAN Z RWY 32

SE-3, 31 OCT 2024 to 28 NOV 2024

SE-3, 31 OCT 2024 to 28 NOV 2024