

KEY WEST, FLORIDA

HI-TACAN W RWY 8

VORTAC EYW 113.5 Chan 82	APCH CRS 098°	Rwy Idg 10,001 TDZE 4 Arprt Elev 6
--	-------------------------	---

AL-214 [USN]

KEY WEST NAS (BOCA CHICA FLD) (KNQX)

RADAR required

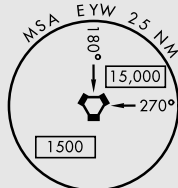
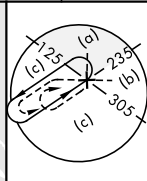
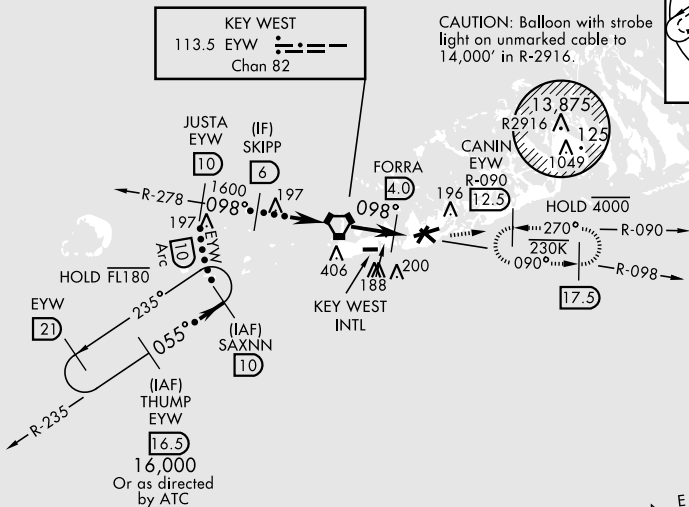
ALSIF-1



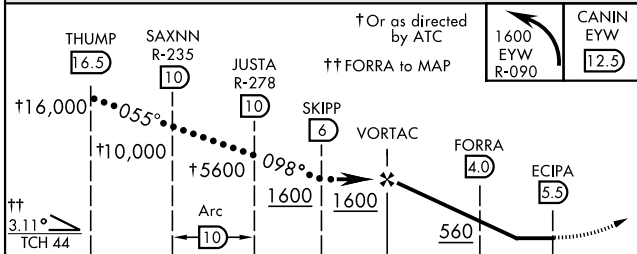
MISSED APPROACH: Climbing left turn to 1600 intercept EYW VORTAC R-090 to CANIN and hold.

ATIS ★ 307.025	NAVY KEY WEST APP CON 124.025 313.7	NAVY KEY WEST TOWER ★ 118.575 340.25	GND CON 121.7 336.45	CLNC DEL 121.2 357.4	ASR/PAR
--------------------------	---	--	--------------------------------	--------------------------------	---------

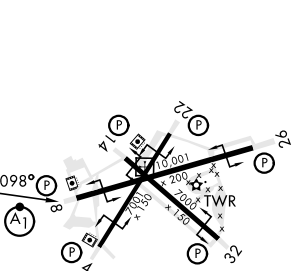
CAUTION: Excessive descent gradients multiple segments



EMERG SAFE ALT 100 NM 15,000



ELEV 6	TDZE 4
--------	--------



CATEGORY	C	D	E
S-8	440-1¼	436 (500-1¼)	
CIRCLING	500-1½ 494 (500-1½)	560-2	554 (600-2)

HIRL all rwys

KEY WEST, FLORIDA

24°34'N-81°41'W KEY WEST NAS (BOCA CHICA FLD) (KNQX)

Amdt 4 23FEB23

HI-TACAN W RWY 8

SE-3, 03 OCT 2024 to 31 OCT 2024

SE-3, 03 OCT 2024 to 31 OCT 2024