

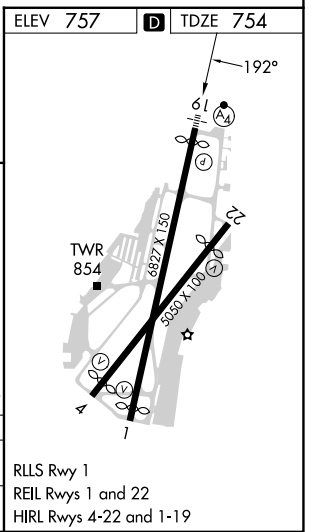
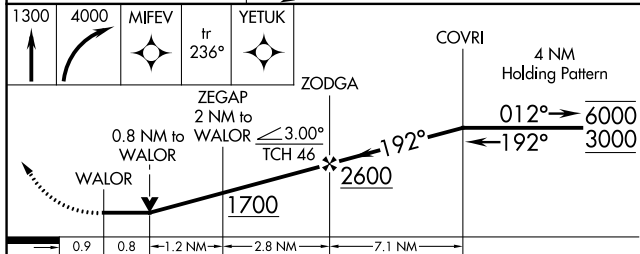
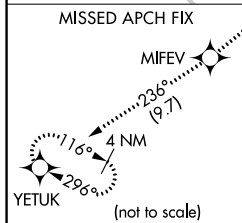
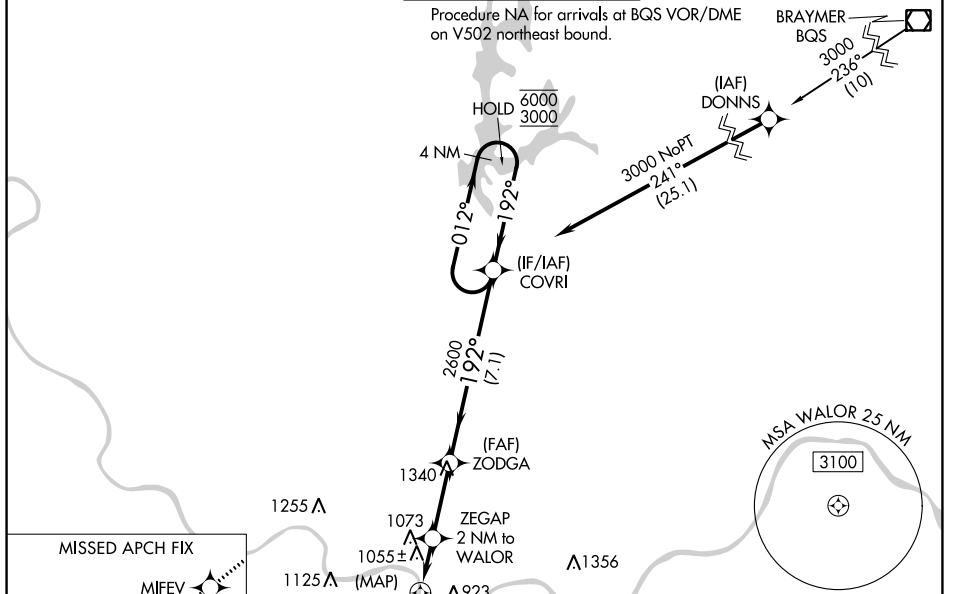
APP CRS	Rwy Idg	6525
192°	TDZE	754
	Apt Elev	757

RNAV (GPS) Y RWY 19

CHARLES B WHEELER DOWNTOWN (MKC)

RNP APCH-GPS.	MALSF	MISSED APPROACH: Climb to 1300 then climbing right turn to 4000 direct MIFEV and on track 236° to YETUK and hold.
<p>▼ Circling NA east of Rwy 1-19. Helicopter visibility reduction below RVR 4000 NA. Circling NA for Cat D to Rwy 4. For inop ALS, increase LNAV Cats A/B visibility to RVR 6000 and Cats C/D to 1 3/4 SM. Circling NA to Rwy 22.</p>		

ATIS 120.75	KANSAS CITY APP CON 118.4 307.35	DOWNTOWN TOWER 133.3 233.7	CLNC DEL 121.9	GND CON 121.9
-----------------------	--	--------------------------------------	--------------------------	-------------------------



CATEGORY	A	B	C	D
LNAV MDA	1340/40	586 (600-3/4)	1340-1 3/8	586 (600-1 3/8)
CIRCLING	1380-1 1/8 623 (700-1 1/8)	1400-1 1/8 643 (700-1 1/8)	1460-2 703 (800-2)	1540-2 1/2 783 (800-2 1/2)

RLS Rwy 1
REIL Rws 1 and 22
HIRL Rws 4-22 and 1-19

NC-3, 03 OCT 2024 to 31 OCT 2024

NC-3, 03 OCT 2024 to 31 OCT 2024