

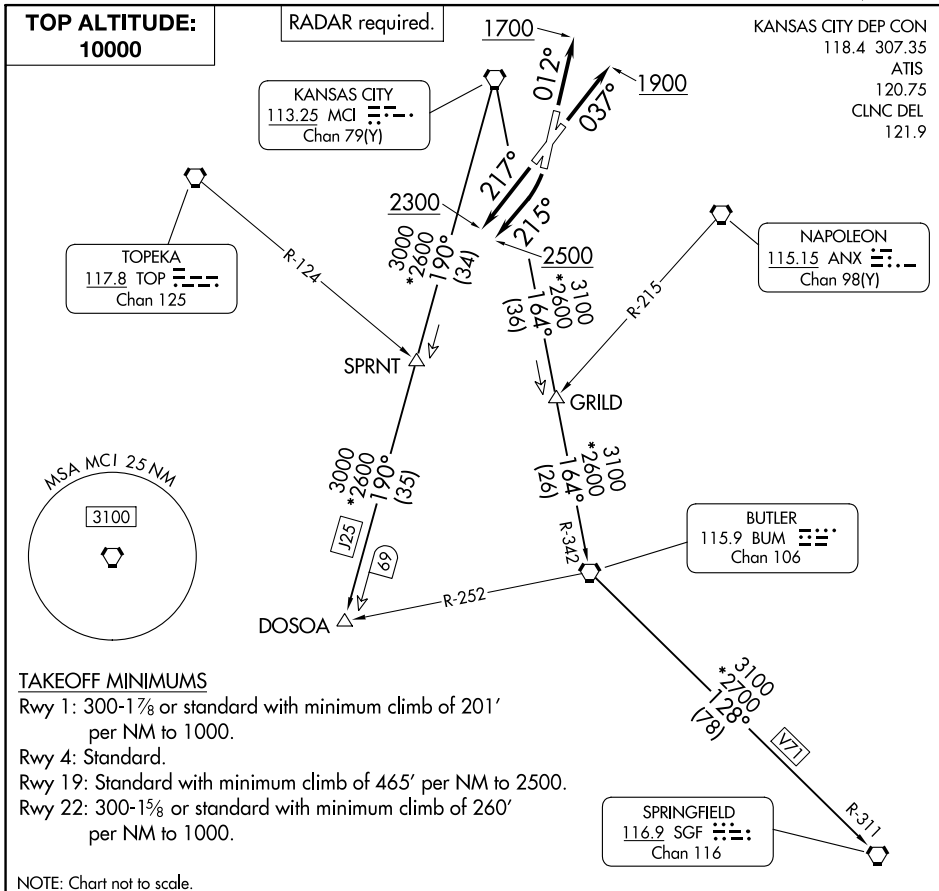
(RACER8.MCI) 24137

RACER EIGHT DEPARTURE

AL-213 (FAA)

CHARLES B WHEELER DOWNTOWN (MKC)

KANSAS CITY, MISSOURI



NC-3, 03 OCT 2024 to 31 OCT 2024

NC-3, 03 OCT 2024 to 31 OCT 2024

DEPARTURE ROUTE DESCRIPTION

- TAKEOFF RUNWAY 1:** Climb on heading 012° to 1700, thence. . .
- TAKEOFF RUNWAY 4:** Climb on heading 037° to 1900, thence. . .
- TAKEOFF RUNWAY 19:** Climbing right turn heading 215° to 2500, thence. . .
- TAKEOFF RUNWAY 22:** Climb on heading 217° to 2300, thence. . .

. . . climb on assigned heading for RADAR vectors to appropriate route. Maintain 10000 or as assigned by ATC, expect filed altitude 10 minutes after departure.

BUTLER TRANSITION (RACER8.BUM): From over MCI VORTAC on MCI R-164 and BUM R-342 to BUM VORTAC.

DOSOA TRANSITION (RACER8.DOSOA): From over MCI VORTAC on MCI R-190 to DOSOA.

SPRINGFIELD TRANSITION (RACER8.SGF): From over MCI VORTAC on MCI R-164 and BUM R-342 to BUM VORTAC, then on BUM R-128 and SGF R-311 to SGF VORTAC.

RACER EIGHT DEPARTURE

(RACER8.MCI) 05OCT23

KANSAS CITY, MISSOURI
CHARLES B WHEELER DOWNTOWN (MKC)