

LOC/DME I-GQR 111.75 Chan 54 (Y)	APP CRS 035°	Rwy Idg 4270 TDZE 744 Apt Elev 757
---	------------------------	---

ILS or LOC RWY 4

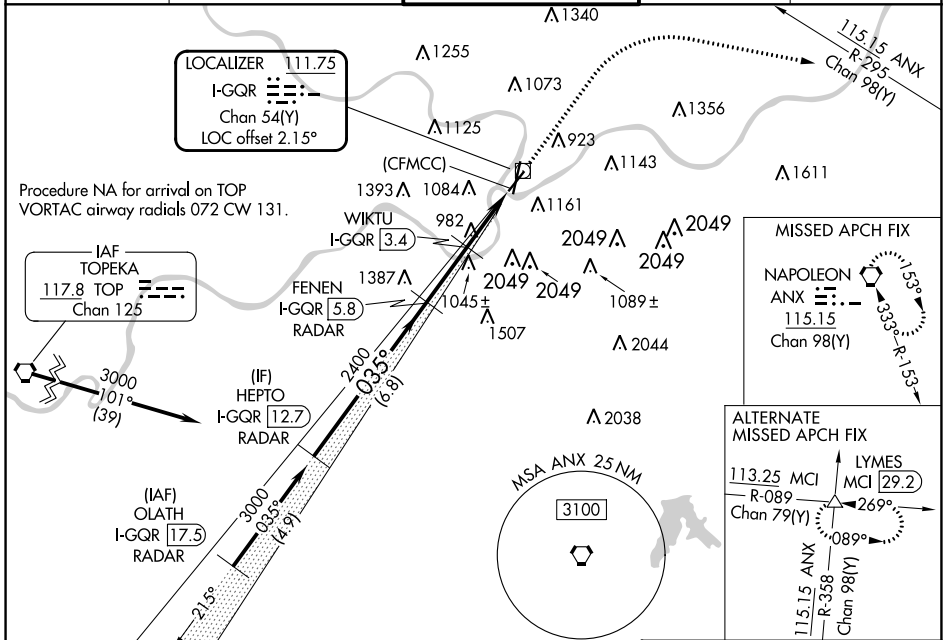
CHARLES B WHEELER DOWNTOWN (MKC)

DME or RADAR required for procedure entry. DME or RADAR required for LOC only.

⚠ Circling NA east of Rwy 1-19. Autopilot coupled approach NA below 1013.
⚠ Circling NA to Rwy 22. Circling NA for Cat D to Rwy 4. Rwy 4 helicopter visibility reduction below RVR 4000 NA.

MISSED APPROACH: Climb to 3100 then right turn heading 100° and on ANX VORTAC R-295 to ANX VORTAC and hold.

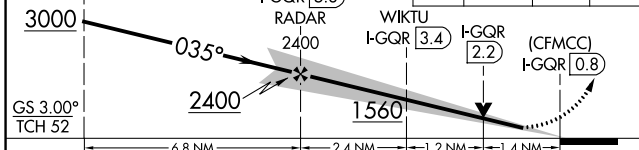
ATIS 120.75	KANSAS CITY APP CON 118.4 307.35	DOWNTOWN TOWER 133.3 233.7	CLNC DEL 121.9	GND CON 121.9
-----------------------	--	--------------------------------------	--------------------------	-------------------------



NC-3, 03 OCT 2024 to 31 OCT 2024

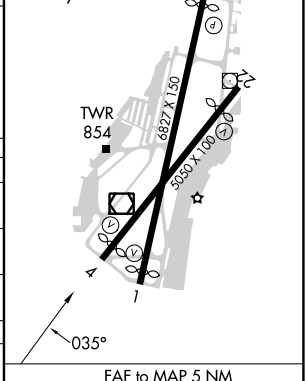
NC-3, 03 OCT 2024 to 31 OCT 2024

HEPTO I-GQR 12.7 RADAR	VGSI and ILS glidepath not coincident (VGSI Angle 3.00/TCH 35).	3100	ANX R-295	ANX
FENEN I-GQR 5.8 RADAR	WIKTU I-GQR 3.4	2400	(CFMCC) I-GQR 0.8	



ELEV 757	TDZE 744
----------	----------

HIRL Rws 4-22 and 1-19
REL Rws 1 and 22
RLS Rwy 1



CATEGORY	A	B	C	D
S-ILS 4	1001/40 257 (300-¾)			NA
S-LOC 4	1560/55 816 (900-1)	1560-1¼ 816 (900-1¼)	1560-2½ 816 (900-2½)	NA
C CIRCLING	1560-1 803 (900-1)	1560-1¼ 803 (900-1¼)	1560-2½	803 (900-2½)
WIKTU FIX MINIMUMS				
S-LOC 4	1240/55	496 (500-1)	1240-1⅜ 496 (500-1⅜)	NA
C CIRCLING	1380-1 623 (700-1)	1400-1 643 (700-1)	1460-2 703 (800-2)	1540-2½ 783 (800-2½)

FAF to MAP 5 NM					
Knots	60	90	120	150	180
Min:Sec	5:00	3:20	2:30	2:00	1:40