

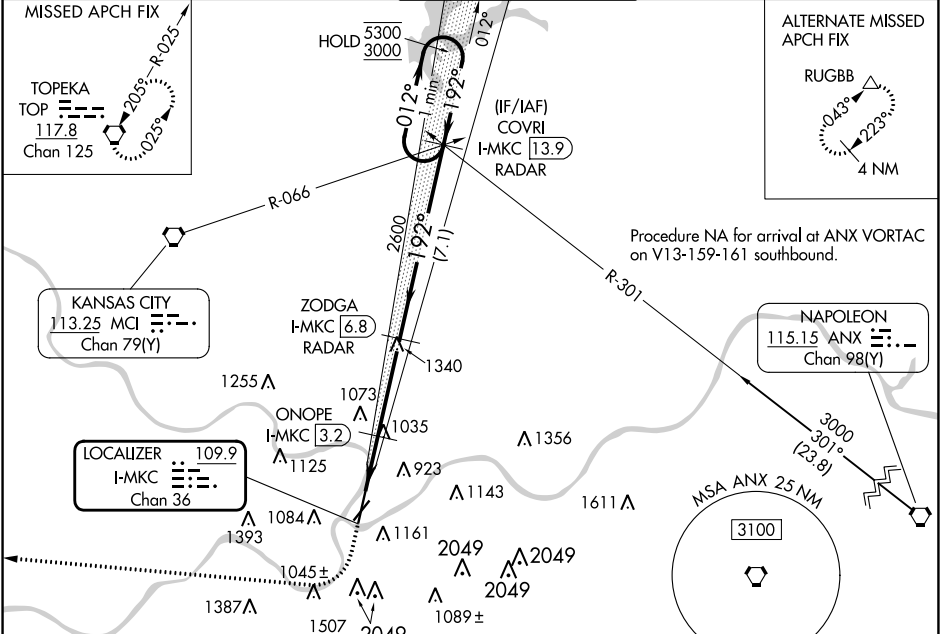
LOC/DME I-MKC <b>109.9</b> Chan 36	APP CRS <b>192°</b>	Rwy Idg <b>6525</b> TDZE <b>754</b> Apt Elev <b>757</b>
--	------------------------	---

# ILS or LOC RWY 19

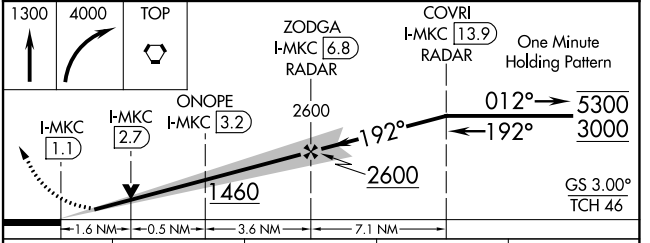
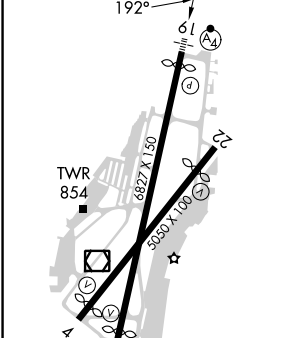
CHARLES B WHEELER DOWNTOWN (MKC)

DME or RADAR required for LOC only. DME or RADAR required for procedure entry.		MALSF 	MISSED APPROACH: Climb to 1300 then climbing right turn to 4000 direct TOP VORTAC and hold.
<p><b>▼</b> Circling NA east of Rwy 1-19. Circling NA to Rwy 22. For inop ALS, increase S-LOC 19 Cat C/D visibility to 2 SM. Circling NA for Cat D to Rwy 4. Rwy 19 helicopter visibility reduction below RVR 4000 NA. S-ILS 19 inop table does not apply.</p>			

ATIS <b>120.75</b>	KANSAS CITY APP CON <b>118.4 307.35</b>	DOWNTOWN TOWER <b>133.3 233.7</b>	CLNC DEL <b>121.9</b>	GND CON <b>121.9</b>
-----------------------	--	--------------------------------------	--------------------------	-------------------------



ELEV 757	<b>D</b>	TDZE 754
----------	----------	----------



CATEGORY	A	B	C	D
S-ILS 19	1004/40		250 (300-¾)	
S-LOC 19	1460/40 706 (800-¾)	1460/55 706 (800-1)	1460-1⅞ 706 (800-2)	706 (800-1⅞)
<b>C</b> CIRCLING	1460-1 703 (800-1)		1460-2 703 (800-2)	1540-2½ 783 (800-2½)
ONOPE FIX MINIMUMS				
S-LOC 19	1300/40	546 (600-¾)	1300-1⅓	546 (600-1⅓)
<b>C</b> CIRCLING	1380-1 623 (700-1)	1400-1 643 (700-1)	1460-2 703 (800-2)	1540-2½ 783 (800-2½)

FAF to MAP 5.7 NM					
Knots	60	90	120	150	180
Min:Sec	5:42	3:48	2:51	2:17	1:54

NC-3, 03 OCT 2024 to 31 OCT 2024

NC-3, 03 OCT 2024 to 31 OCT 2024