

JACKSONVILLE, FLORIDA

RNAV (RNP) Y RWY 10

APCH CRS	Rwy ldg	8006
096°	TDZE	21
	Arprt Elev	23

- (USN)

JACKSONVILLE NAS (TOWERS FLD) (KNIP)

RNP AR APCH - RF required.

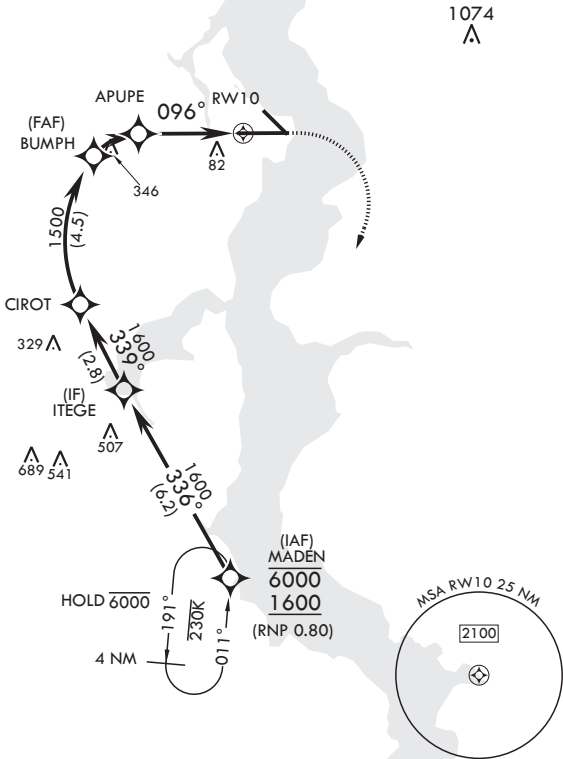


MISSED APPROACH: Climb to 600 then climbing right turn to 2000 direct MADEN and hold.

▼ * When ALS inop increase vis to 1 mile.

ATIS	APP CON/DEP CON	TOWER	GND CON	CLNC DEL	ASR/PAR
124.35 290.425	127.775 377.075	125.15 (CTAF) 340.2	128.6 336.4	134.775 353.675	

For uncompensated Baro-VNAV systems, procedure NA below -15°C (5°F) or above 54°C (130°F).



AUTHORIZATION REQUIRED

³⁰⁶ EMERG SAFE ALT 100 NM 2800

MADEN	ITEGE	CIROT	BUMPH	APUPE	RWY 10
6000 1600	336° 1600	339° 1600	1500	1027	096°
GP 3.00° TCH 51		1500		1.5 NM → 3 NM	
ELEV 23		MADEN		ELEV 23	
TDZE 21		600		2000	
Rwy 10 ldg 8006'		Rwy 14 ldg 3244'		TWR 87	
BCN 167		9003 x 200		A1 A2	
096°		H IRL Rwy 10-28		H H	
CATEGORY	A	B	C	D	
RNP 0.30 DA*	389-5/8		368	(400-5/8)	

JACKSONVILLE, FLORIDA

30°14'N - 81°41'W

JACKSONVILLE NAS (TOWERS FLD) (KNIP)

Amdt 2 03NOV22

RNAV (RNP) Y RWY 10

SE-3, 31 OCT 2024 to 28 NOV 2024

SE-3, 31 OCT 2024 to 28 NOV 2024