

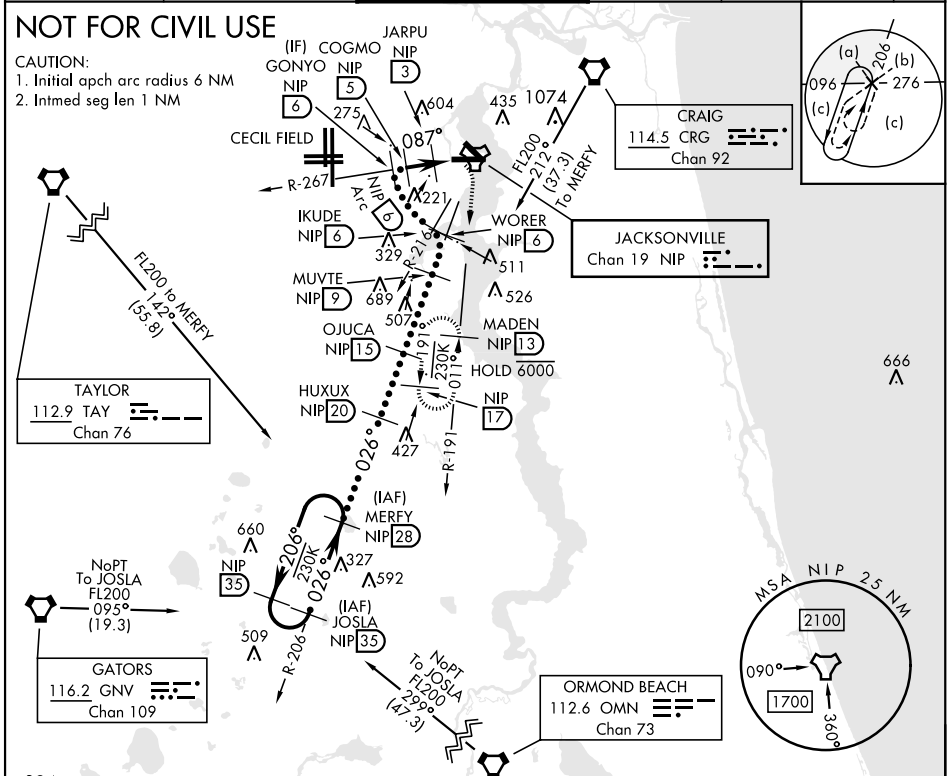
HI-TACAN Z RWY 10

TACAN Chan 19	NIP 087°	APCH CRS 087°	Rwy ldg TDZE Arpt Elev	8006 21 23	[USN]	JACKSONVILLE NAS (TOWERS FLD)	(KNIP)
-------------------------	--------------------	-------------------------	------------------------------	---------------------------------------	-------	-------------------------------	--------

MISSED APPROACH: Climb to 2000 direct NIP TACAN, outbound R-191 to MADEN and hold.

* When ALS inop, increase CAT CDE vis to 1½ miles.

ATIS 124.35 290.425	APP CON 127.775 377.075	NAVY JACKSONVILLE TOWER 125.15 (CTAF) 340.2	GND CON 128.6 336.4	CLNC DEL 134.775 0353.675	ASR/ PAR
-------------------------------	-----------------------------------	---	-------------------------------	-------------------------------------	-------------



384	EMERG SAFE ALT 100 NM 2800	ELEV 23	TDZE 21
MERFY R-206	MUVTE	↑ COGMO to MAP	2000 NIP
HUXUX	OJUCA	↑ NIP R-191	MADEN NIP 13
FL200 13,000	WORER R-206	COGMO	JARPU NIP 3
8000	IKUDE R-216	↑ 087°	TACAN
4000	GONYO R-267	↑ 2.97° TCH 51	HIVIN 1.3
1700	COGMO	↑ 087°	NIP 1.9
1600	JARPU	↑ 087°	NIP 1.3
1500	NIP 6 Arc	↑ 087°	NIP 1.3
1400		↑ 087°	NIP 1.3
760		↑ 087°	NIP 1.3
2 NM	1.7 NM	1.5	
CATEGORY	C	D	E
S-10 *	420-¾	399 (400-¾)	
CIRCLING	560-1½ 537 (600-1½)	780-2½ 757 (800-2½)	920-3 897 (900-3)
	HIRL Rwy 10-28		

HI-TACAN Z RWY 10

SE-3, 31 OCT 2024 to 28 NOV 2024

SE-3, 31 OCT 2024 to 28 NOV 2024