


WAAS CH 57901 W32A	APP CRS 321°	Rwy Idg 4008 TDZE 41 Apt Elev 41
--	------------------------	---

RNAV (GPS) RWY 32

JACKSONVILLE EXEC AT CRAIG (CRG)

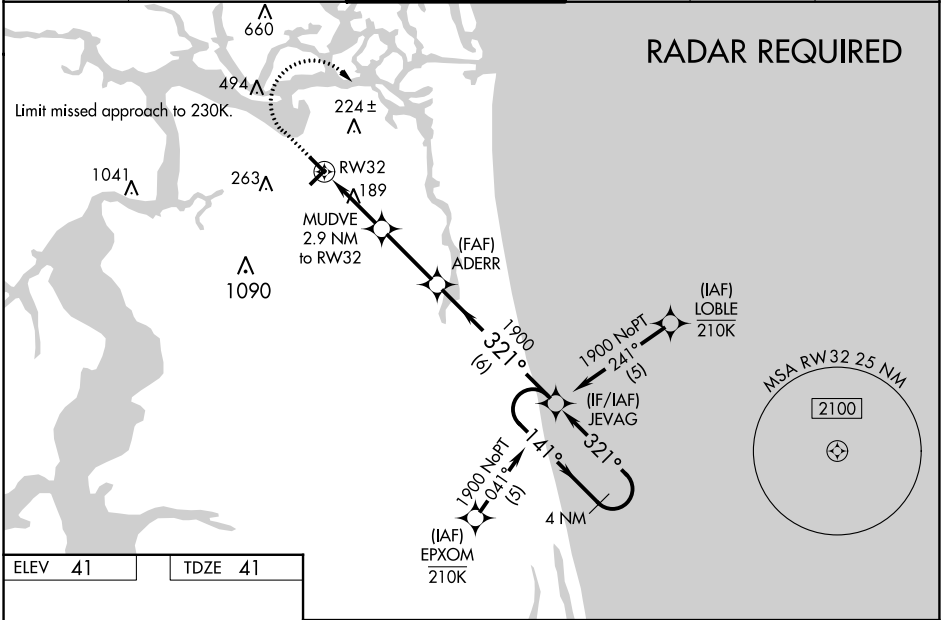
⚠ Night landing: Rwy 5 NA. Baro-VNAV and VDP NA when using Jacksonville Intl altimeter setting. For uncompensated Baro-VNAV systems, LNAV/VNAV NA below -3°C (27°F) or above 54°C (130°F). DME/DME RNP-0.3 NA. Helicopter visibility reduction below ¼ SM NA. VDP NA with Jacksonville Intl altimeter setting. When local altimeter setting not received, use Jacksonville Intl altimeter setting: increase LPV DA to 273 feet; increase LNAV/VNAV DA to 413 feet; increase all MDAs 40 feet and Circling visibility Cat C ¼ SM. For inop MALS, when using Jacksonville Intl altimeter setting, increase LNAV/VNAV all Cats visibility to 1½ and LNAV Cats C/D visibility to 1¼.

MALS

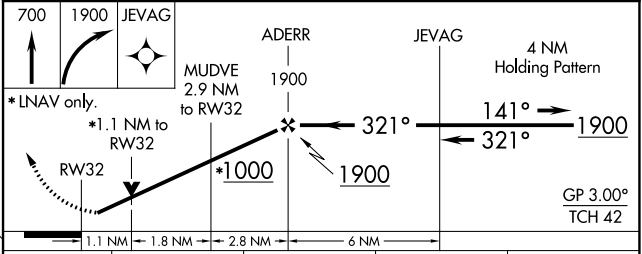
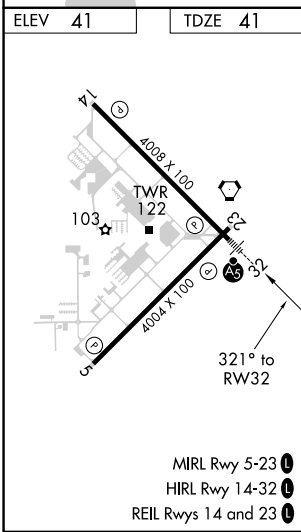


MISSED APPROACH:
Climb to 700 then climbing right turn to 1900 direct JEVAG and hold.

ATIS 125.4	JACKSONVILLE APP CON 124.9 308.4	CRAIG TOWER ★ 132.1 (CTAF) 269.525	GND CON 121.8	CLNC DEL 118.35	UNICOM 122.95
----------------------	--	--	-------------------------	---------------------------	-------------------------



RADAR REQUIRED



CATEGORY	A	B	C	D
LPV DA		241-1	200 (200-1)	
LNAV/VNAV DA		381-1	340 (400-1)	
LNAV MDA		440-1	399 (400-1)	
CIRCLING	500-1 459 (500-1)	600-1 559 (600-1)	620-1½ 579 (600-1½)	800-2½ 759 (800-2½)

SE-3, 31 OCT 2024 to 28 NOV 2024

SE-3, 31 OCT 2024 to 28 NOV 2024