

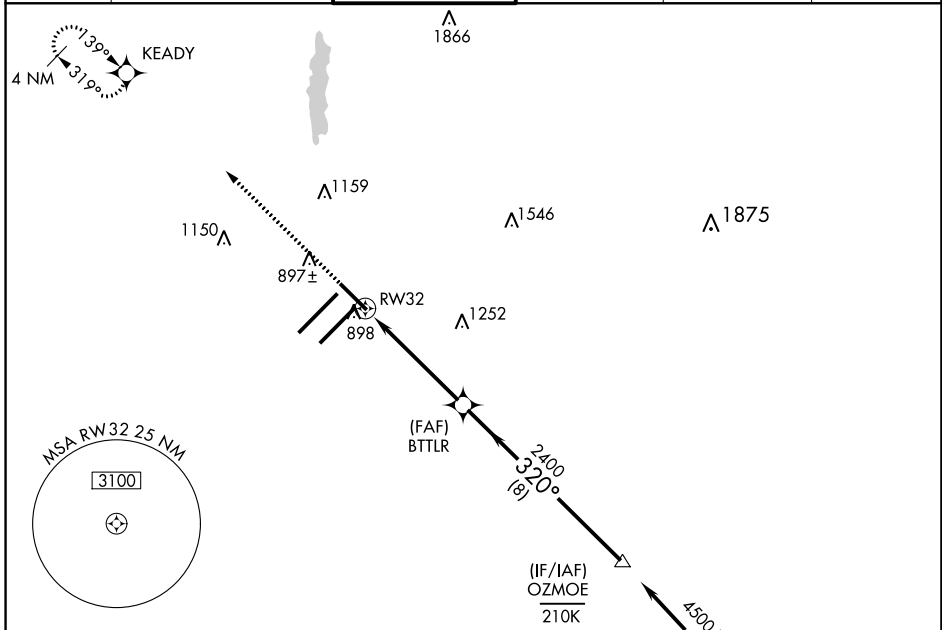
WAAS CH 62802 W32A	APP CRS 320°	Rwy Idg 7278 TDZE 793 Apt Elev 796
--	------------------------	---

RNAV (GPS) Y RWY 32

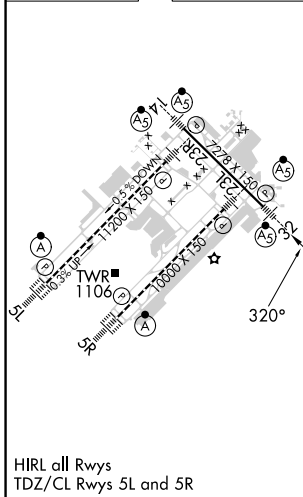
INDIANAPOLIS INTL (IND)

<p>⚠ For uncompensated Baro-VNAV systems, LNAV/VNAV NA below -18°C (0°F) or above 54°C (130°F). DME/DME RNP-0.3 NA. **RVR 1800 authorized with use of FD or AP or HUD to DA.</p>	<p>MALSR </p>	<p>MISSED APPROACH: Climb to 3000 direct KEADY and hold.</p>
---	-------------------	--

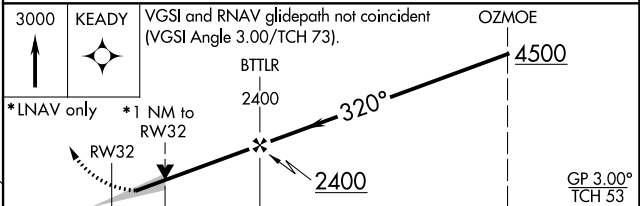
D-ATIS 134.25	INDIANAPOLIS APP CON 128.175 317.8	INDY TOWER 120.9 257.8	GND CON 121.9	CLNC DEL 128.75 257.8	CPDLC
-------------------------	--	----------------------------------	-------------------------	---------------------------------	-------



ELEV 796	D	TDZE 793
----------	----------	----------



Procedure NA for arrivals at DECEE on V128 southeast bound.



CATEGORY	A	B	C	D
LPV DA	** 993/24		200 (200-½)	
LNAV/VNAV DA	1069/24		276 (300-½)	
LNAV MDA	1160/24	367 (400-½)		1160/35 367 (400-¾)
C CIRCLING	1420-1	624 (700-1)	1420-1¾ 624 (700-1¾)	1560-2½ 764 (800-2½)

EC-2, 03 OCT 2024 to 31 OCT 2024

EC-2, 03 OCT 2024 to 31 OCT 2024