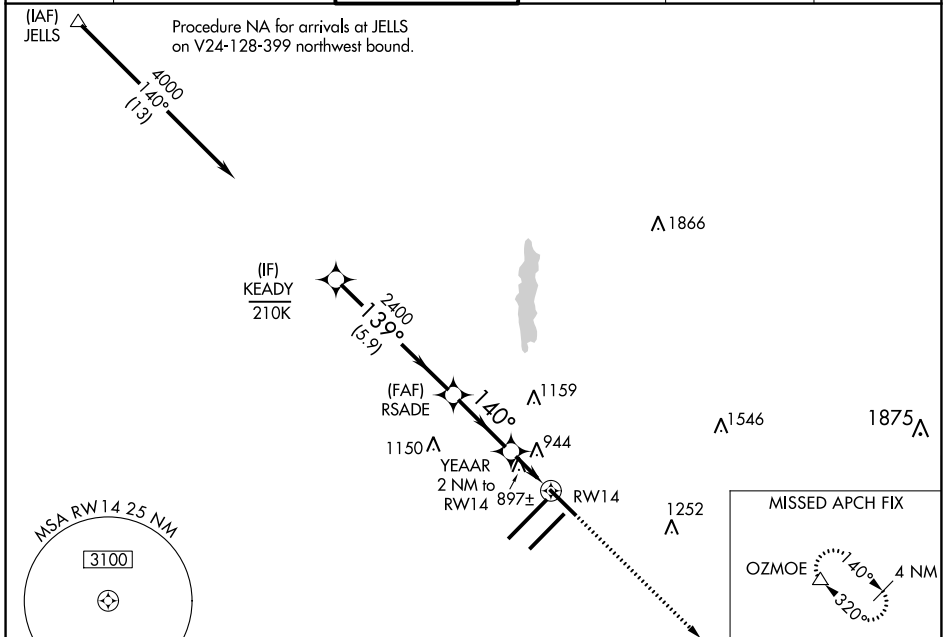


WAAS CH 42602 W14A	APP CRS 140°	Rwy Idg TDZE 7278 796 Apt Elev 796
--	------------------------	--

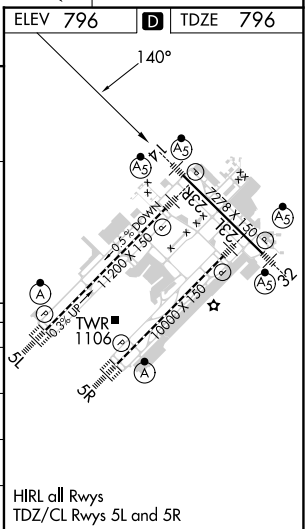
RNAV (GPS) Y RWY 14

INDIANAPOLIS INTL (IND)

<p>⚠ For uncompensated Baro-VNAV systems, LNAV/VNAV NA below -18°C (0°F) or above 54°C (130°F). DME/DME RNP-0.3 NA. **RVR 1800 authorized with use of FD or AP or HUD to DA.</p>		MALSR 	MISSED APPROACH: Climb to 3000 direct OZMOE and hold.		
D-ATIS 134.25	INDIANAPOLIS APP CON 128.175 317.8	INDY TOWER 120.9 257.8	GND CON 121.9	CLNC DEL 128.75 257.8	CPDLC



<p>KEADY 4000 139° 2400 140° 1480 RW14 GP 3.00° TCH 55</p>	<p>VGSI and RNAV glidepath not coincident (VGSI Angle 3.00/TCH 74).</p>				<p>3000 OZMOE △</p>
	5.9 NM	2.9 NM	0.9 NM	1.1 NM	*LNAV only
CATEGORY	A	B	C	D	
LPV DA	**996/24 200 (200-½)				
LNAV/VNAV DA	1092/24 296 (300-½)				
LNAV MDA	1200/24	404 (500-½)	1200/40	404 (500-¾)	
C CIRCLING	1420-1	624 (700-1)	1420-1¾ 624 (700-1¾)	1560-2½ 764 (800-2½)	



EC-2, 08 AUG 2024 to 05 SEP 2024

EC-2, 08 AUG 2024 to 05 SEP 2024