

APP CRS	Rwy Idg	<b>10000</b>
<b>050°</b>	TDZE	<b>791</b>
	Apt Elev	<b>796</b>

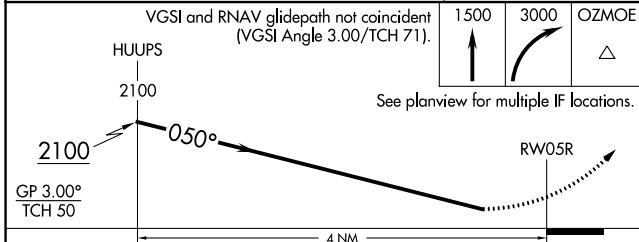
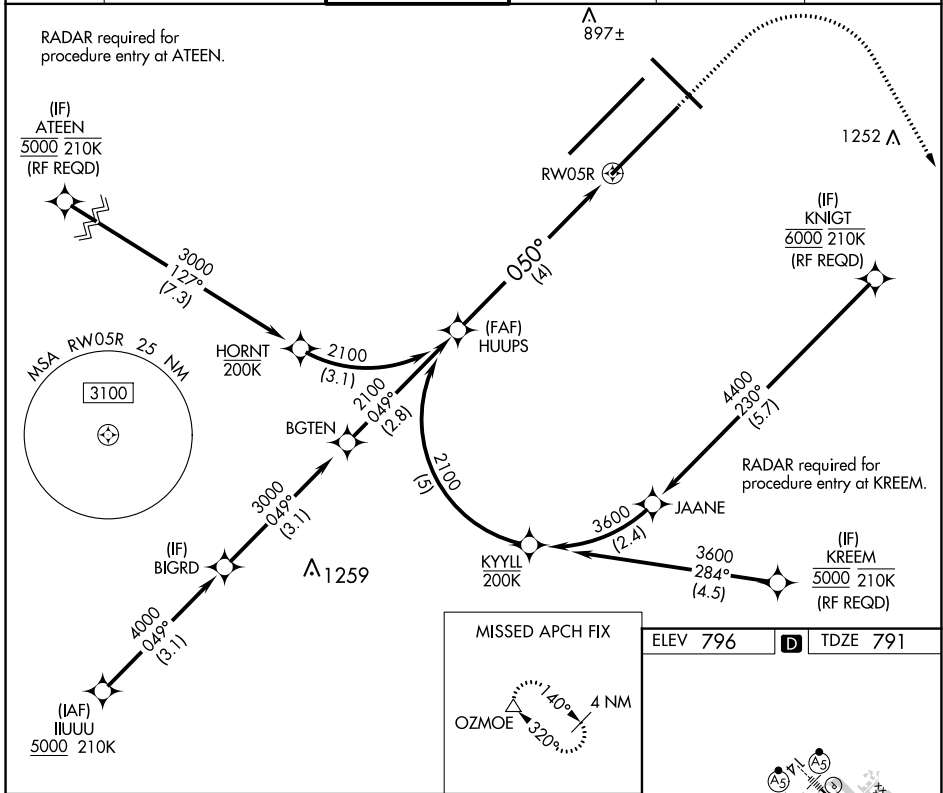
# RNAV (RNP) Z RWY 5R

INDIANAPOLIS INTL (IND)

▼ For uncompensated Baro-VNAV systems, procedure NA below -18°C (0°F) or above 54°C (130°F). GPS required. Simultaneous approach authorized, for arrivals from IUUU only.

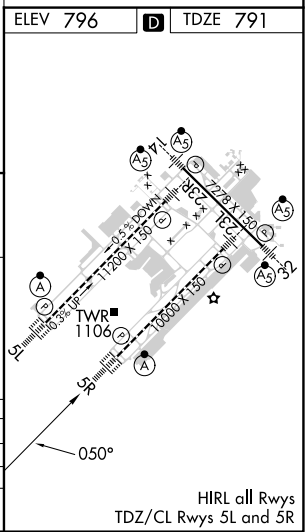
ALSF-2 MISSED APPROACH: Climb to 1500, then climbing right turn to 3000 direct OZMOE and hold.

D-ATIS <b>134.25</b>	INDIANAPOLIS APP CON <b>128.175 317.8</b>	INDY TOWER <b>120.9 257.8</b>	GND CON <b>121.9</b>	CLNC DEL <b>128.75 257.8</b>	CPDLC
-------------------------	--	----------------------------------	-------------------------	---------------------------------	-------



CATEGORY	A	B	C	D
RNP 0.11 DA		1174/45	383 (400- $\frac{3}{4}$ )	
RNP 0.30 DA		1271/60	480 (500-1 $\frac{1}{4}$ )	

## AUTHORIZATION REQUIRED



EC-2, 08 AUG 2024 to 05 SEP 2024

EC-2, 08 AUG 2024 to 05 SEP 2024