

APP CRS <b>230°</b>	Rwy Idg <b>11200</b>
	TDZE <b>783</b>
	Apt Elev <b>796</b>

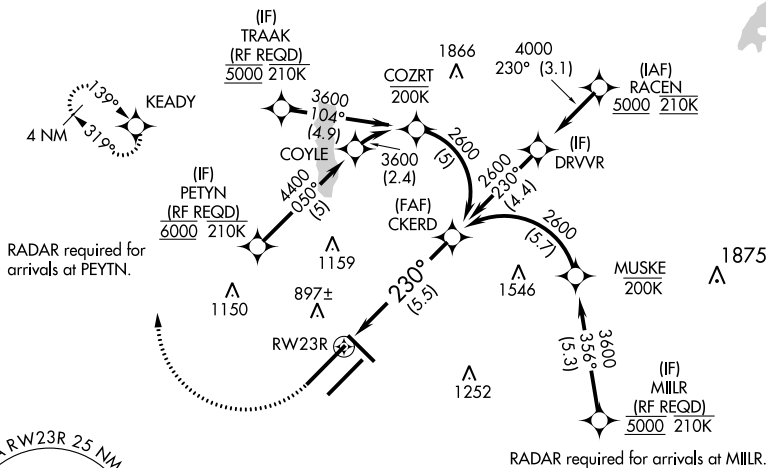
# RNAV (RNP) Z RWY 23R

INDIANAPOLIS INTL (IND)

<p><b>▽</b> For uncompensated Baro-VNAV systems, procedure NA below -18°C (0°F) or above 54°C (130°F). GPS Required. For inoperative ALS, increase RNP 0.15 all Cats visibility to RVR 6000 and increase RNP 0.30 all Cats visibility to 1 3/8 SM. Simultaneous approach authorized.</p>	<p>MALS</p>	<p>MISSED APPROACH: Climb to 1200 then climbing right turn to 3000 direct KEADY and hold.</p>

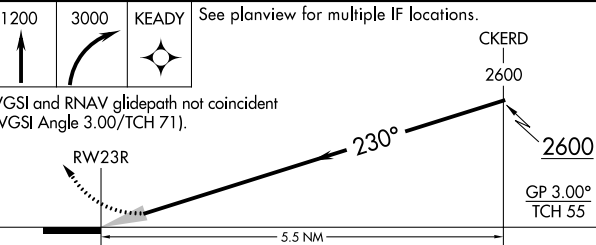
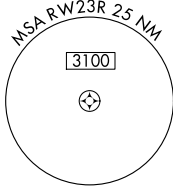
D-ATIS <b>134,25</b>	INDIANAPOLIS APP CON <b>128.175 317.8</b>	INDY TOWER <b>120.9 257.8</b>	GND CON <b>121.9</b>	CLNC DEL <b>128.75 257.8</b>	CPDLC
-------------------------	--	----------------------------------	-------------------------	---------------------------------	-------

RADAR required for arrivals at TRAAK.



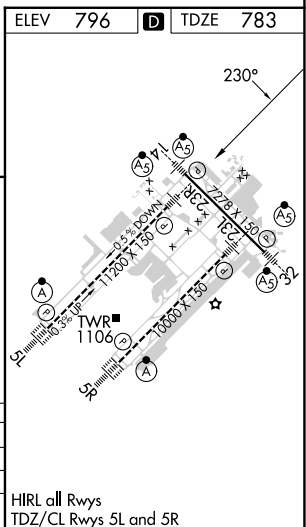
EC-2, 08 AUG 2024 to 05 SEP 2024

EC-2, 08 AUG 2024 to 05 SEP 2024



CATEGORY	A	B	C	D
RNP 0.15 DA		1147/40	364 (400-3/4)	
RNP 0.30 DA		1206/50	423 (500-1)	

**AUTHORIZATION REQUIRED**



HIRL all Rwys  
TDZ/CL Rwys 5L and 5R