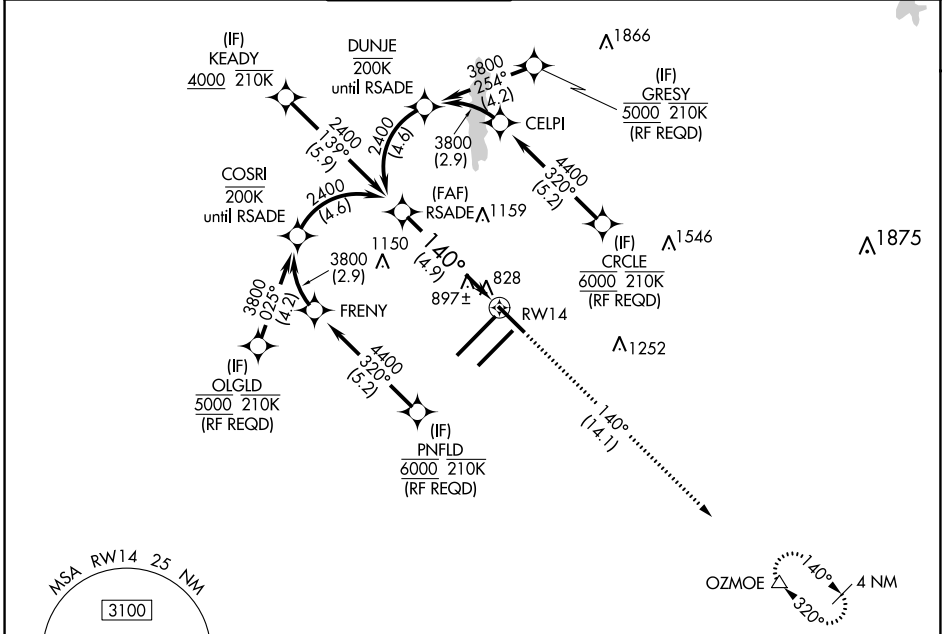


APP CRS	Rwy ldg	<b>7278</b>
<b>140°</b>	TDZE	<b>796</b>
	Apt Elev	<b>796</b>

# RNAV (RNP) Z RWY 14

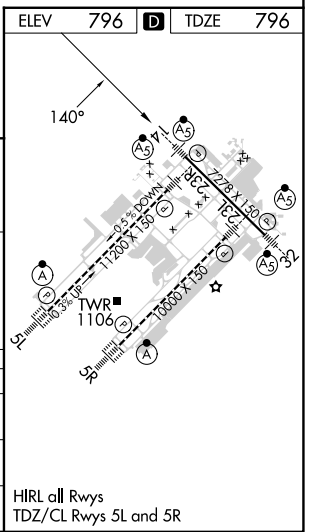
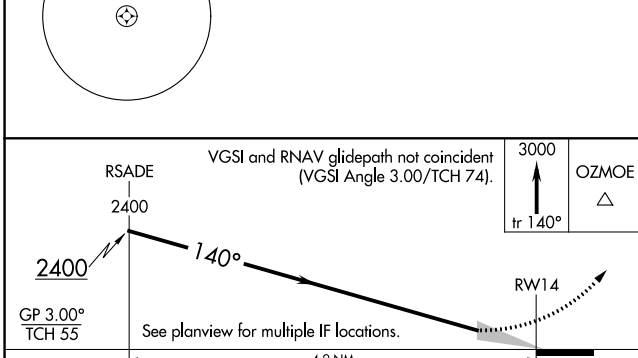
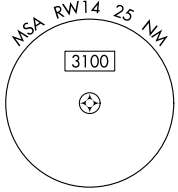
INDIANAPOLIS INTL (IND)

RNP AR APCH.			MALSR	MISSED APPROACH: Climb to 3000 on track 140° to OZMOE and hold.		
▼ For uncompensated Baro-VNAV systems, procedure NA below -18°C or above 54°C.						
D-ATIS	INDIANAPOLIS APP CON	INDY TOWER	GND CON	CLNC DEL	CPDLC	
<b>134.25</b>	<b>128.175 317.8</b>	<b>120.9 257.8</b>	<b>121.9</b>	<b>128.75 257.8</b>		



EC-2, 08 AUG 2024 to 05 SEP 2024

EC-2, 08 AUG 2024 to 05 SEP 2024



CATEGORY	A	B	C	D
RNP 0.14 DA		1135/26	339 (400-½)	
RNP 0.30 DA		1192/45	396 (400-¾)	

**AUTHORIZATION REQUIRED**

HIRL all Rwys  
TDZ/CL Rwys 5L and 5R