

# MEARZ SEVEN DEPARTURE

INDIANAPOLIS, INDIANA

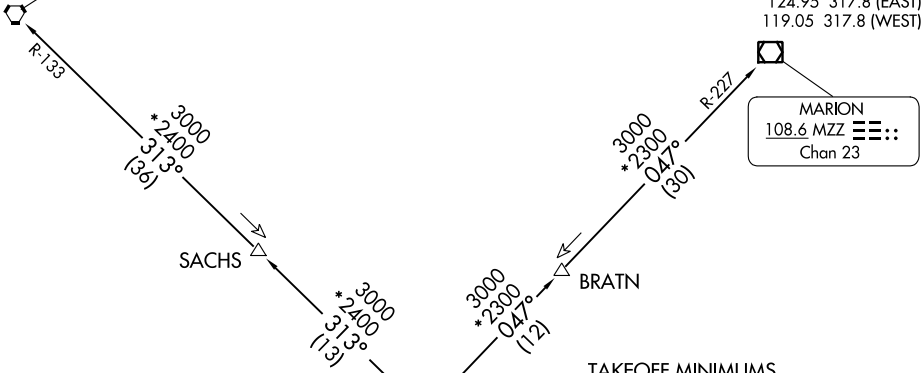
**TOP ALTITUDE:**  
**(JETS) 5000**  
**(PROPS) 3000**

RADAR required.

D-ATIS 134.25  
CLNC DEL  
128.75 257.8  
CPDLC  
GND CON  
121.9  
INDY TOWER  
120.9 257.8  
INDIANAPOLIS DEP CON  
124.95 317.8 (EAST)  
119.05 317.8 (WEST)

BOILER  
115.1 BVT  
Chan 98

MARION  
108.6 MZZ  
Chan 23



TAKEOFF MINIMUMS

Rwy 5L/R, 14, 23L/R, 32: Standard.

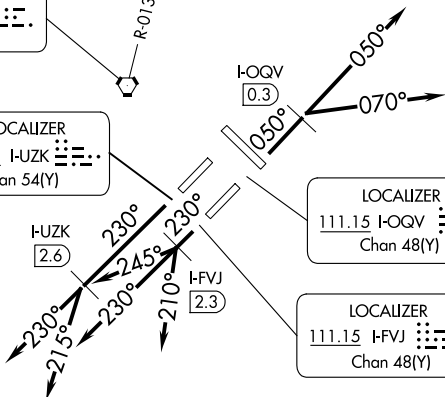
- NOTE: Turbojets accelerate to 250K until reaching 10000, if unable advise ATC.
- NOTE: Assigned to aircraft with a requested altitude of 11000 or above.
- NOTE: Select appropriate localizer/DME frequency/channel prior to departure.

BRICKYARD  
116.3 VHP  
Chan 110

LOCALIZER  
111.75 I-UZK  
Chan 54(Y)

LOCALIZER  
111.15 I-OQV  
Chan 48(Y)

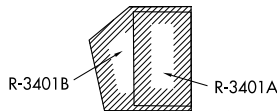
LOCALIZER  
111.15 I-FVJ  
Chan 48(Y)



EC-2, 08 AUG 2024 to 05 SEP 2024

EC-2, 08 AUG 2024 to 05 SEP 2024

(NARRATIVE ON FOLLOWING PAGE)



NOTE: Chart not to scale.

# MEARZ SEVEN DEPARTURE

(MEARZ7.MEARZ) 19MAY22

INDIANAPOLIS, INDIANA  
INDIANAPOLIS INTL (IND)