

# INDY TWO DEPARTURE

AL-203 (FAA)

INDIANAPOLIS INTL (IND)  
INDIANAPOLIS, INDIANA

D-ATIS 134.25  
 CLNC DEL  
 128.75 257.8  
 CPDLC  
 GND CON  
 121.9  
 INDY TOWER  
 120.9 257.8  
 INDIANAPOLIS DEP CON  
 124.95 317.8 (EAST)  
 119.05 317.8 (WEST)

RADAR required.

**TOP ALTITUDE:**  
**(JETS) 5000**  
**(PROPS) 3000**

BOILER  
 115.1 BVT  
 Chan 98

MARION  
 108.6 MZZ  
 Chan 23

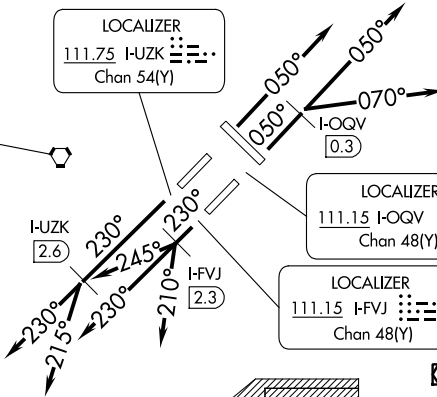
ROSEWOOD  
 117.5 ROD  
 Chan 122

CHAMPAIGN  
 115.75 CMI  
 Chan 104(Y)

LOCALIZER  
 111.75 I-UZK  
 Chan 54(Y)

BRICKYARD  
 116.3 VHP  
 Chan 110

TERRE HAUTE  
 115.3 TTH  
 Chan 100

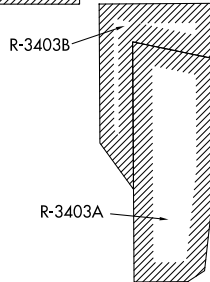


DAYTON  
 114.5 DGN  
 Chan 92

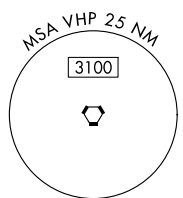
LOCALIZER  
 111.15 I-FVJ  
 Chan 48(Y)

SHELBYVILLE  
 116.15 SHB  
 Chan 108 (Y)

HOOSIER  
 110.2 OOM  
 Chan 39



POCKET CITY  
 113.3 PVX  
 Chan 80



### TAKEOFF MINIMUMS:

Rwy 5L/R, 14, 23L/R, 32: Standard.

NOTE: Select appropriate localizer/DME frequency/channel prior to departure.  
 NOTE: Jet aircraft accelerate to 250K until reaching 10000. If unable advise ATC.

(CONTINUED ON FOLLOWING PAGE)

NOTE: Chart not to scale.

EC-2, 08 AUG 2024 to 05 SEP 2024

EC-2, 08 AUG 2024 to 05 SEP 2024