

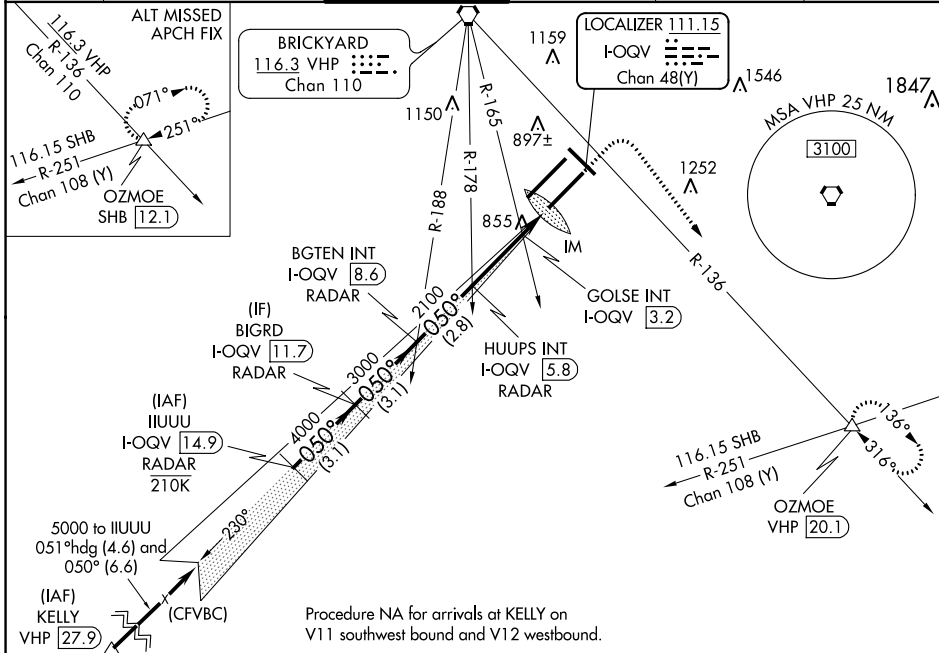
LOC/DME I-QQV 111.15 Chan 48(Y)	APP CRS 050°	Rwy Idg 10000 TDZE 791 Apt Elev 796
--	------------------------	--

ILS or LOC RWY 5R

INDIANAPOLIS INTL (IND)

⚠ DME or RADAR required. Simultaneous approach authorized.	ALSF-2 (A)	MISSED APPROACH: Climb to 1500 then climbing right turn to 3000 on heading 148° and on VHP VORTAC R-136 to OZMOE INT/VHP 20.1 DME and hold.
--	-----------------------------	---

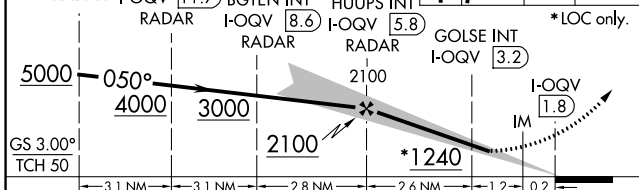
D-ATIS 134.25	INDIANAPOLIS APP CON 128.175 317.8	INDY TOWER 120.9 257.8	GND CON 121.9	CLNC DEL 128.75 257.8	CPDLC
-------------------------	--	----------------------------------	-------------------------	---------------------------------	-------



EC-2, 08 AUG 2024 to 05 SEP 2024

EC-2, 08 AUG 2024 to 05 SEP 2024

IIUUU I-QQV 14.9	BIGRD I-QQV 11.7	BGTEN INT I-QQV 8.6	HUUPS INT I-QQV 5.8	GOLSE INT I-QQV 3.2	OZMOE VHP R-136	ELEV 796	TDZE 791
------------------	------------------	---------------------	---------------------	---------------------	-----------------	----------	----------



CATEGORY	A	B	C	D
S-ILS 5R	991/18 200 (200-½)			
S-LOC 5R	1240/24	449 (500-½)	1240/45	449 (500-¾)
C CIRCLING	1420-1	624 (700-1)	1420-1¾ 624 (700-1¾)	1560-2½ 764 (800-2½)
GOLSE FIX MINIMUMS (DUAL VOR RECEIVERS or DME REQUIRED)				
S-LOC 5R	1160/24	369 (400-½)	1160/35	369 (400-¾)
C CIRCLING	1420-1	624 (700-1)	1420-1¾ 624 (700-1¾)	1560-2½ 764 (800-2½)

The plan view diagram shows the horizontal profile of the approach:

- 5000** ft at **050°** heading.
- 4000** ft at **050°** heading.
- 3000** ft at **050°** heading.
- 2100** ft at **050°** heading.
- 1240** ft at **050°** heading.
- 1500** ft and **3000** ft altitudes are marked.
- 148°** heading is marked for the final approach.
- IM** (Instrument Minimums) is shown at the end of the profile.

HIRL all Rwws TDZ/CL Rwws 5L and 5R					
FAF to MAP 4 NM					
Knots	45	60	75	90	105
Min:Sec	5:20	4:00	3:12	2:40	2:17