

LOC/DME I-IND 111.75 Chan 54 (Y)	APP CRS 050°	Rwy Idg 11200 TDZE 747 Apt Elev 796
--	------------------------	--

ILS or LOC RWY 5L

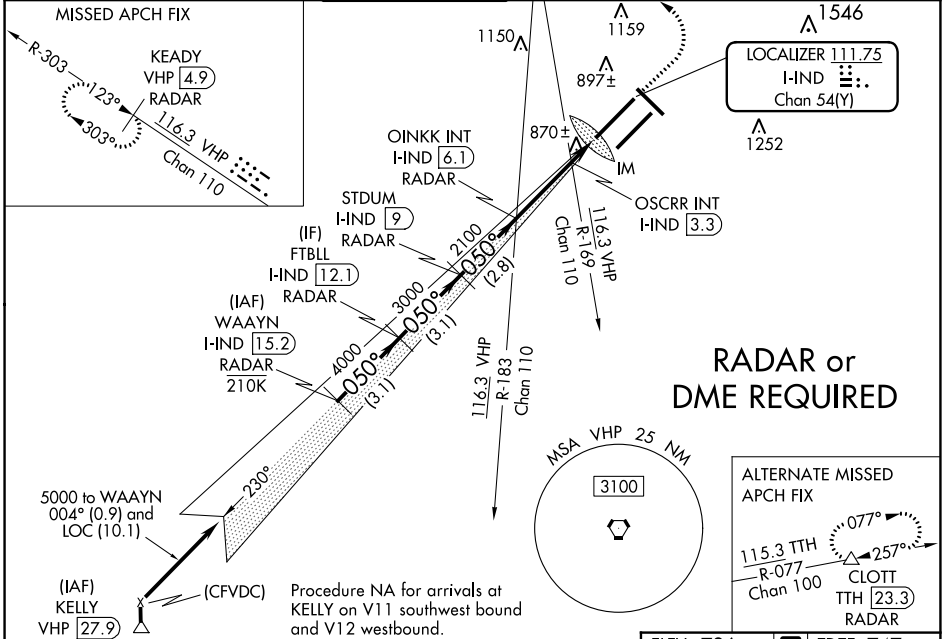
INDIANAPOLIS INTL (IND)

⚠ Simultaneous approach authorized. DME or RADAR required. For inop ALS, increase S-LOC 5L Cat C/D visibility to 1 1/2 SM. OSCRR fix minimums: For inop ALS, increase S-LOC 5L Cat C/D visibility to RVR 5500.

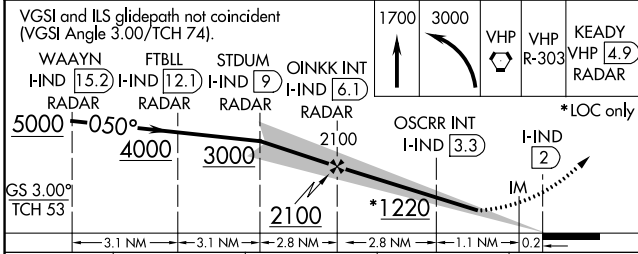
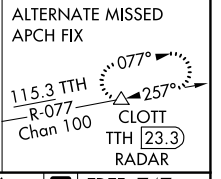
ALSIF-2
A

MISSED APPROACH: Climb to 1700 then climbing left turn to 3000 direct VHP VORTAC then on VHP VORTAC R-303 to KEADY/VHP 4.9 DME/RADAR and hold.

D-ATIS 134.25	INDIANAPOLIS APP CON 128.175 317.8	INDY TOWER 120.9 257.8	GND CON 121.9	CLNC DEL 128.75 257.8	CPDLC
-------------------------	--	----------------------------------	-------------------------	---------------------------------	-------



RADAR or DME REQUIRED



ELEV 796	D TDZE 747
HRL all Rwws TDZ/CL Rwws 5L and 5R FAF to MAP 4.1 NM	
Knots	60 90 120 150 180
Min:Sec	4:06 2:44 2:03 1:38 1:22

CATEGORY	A	B	C	D
S-ILS 5L	947/18		200 (200-1/2)	
S-LOC 5L	1220/24	473 (500-1/2)	1220/50	473 (500-1)
C CIRCLING	1420-1	624 (700-1)	1420-1 3/4 624 (700-1 3/4)	1560-2 1/2 764 (800-2 1/2)
OSCCR FIX MINIMUMS (DUAL VOR RECEIVERS or DME REQUIRED)				
S-LOC 5L	1120/24	373 (400-1/2)	1120/35	373 (400-5/8)
C CIRCLING	1420-1	624 (700-1)	1420-1 3/4 624 (700-1 3/4)	1560-2 1/2 764 (800-2 1/2)

EC-2, 08 AUG 2024 to 05 SEP 2024

EC-2, 08 AUG 2024 to 05 SEP 2024