




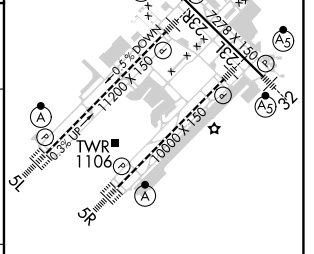
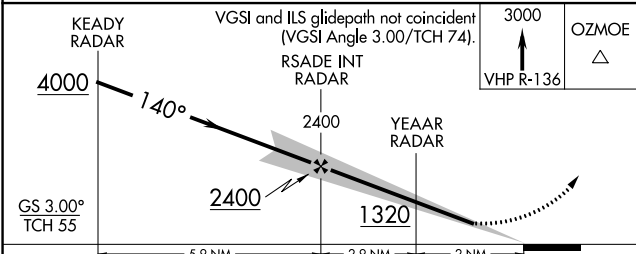
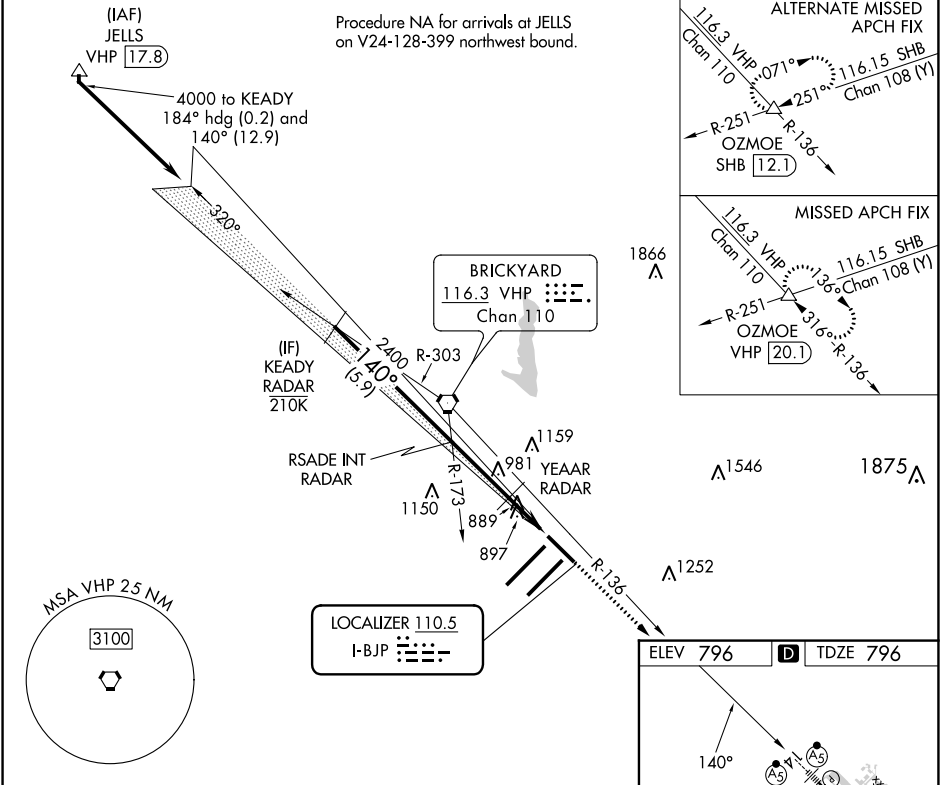
LOC I-BJP 110.5	APP CRS 140°	Rwy Idg 7278 TDZE 796 Apt Elev 796
---------------------------	------------------------	---


I LS or LOC RWY 14

INDIANAPOLIS INTL (IND)

RADAR required.			MALSR 	MISSED APPROACH: Climb to 3000 on VHP R-136 to OZMOE INT/VHP 20.1 DME and hold.	
 For inop ALS, increase S-LOC 14 Cat C and D visibility to RVR 5500.  *RVR 1800 authorized with use of FD or AP or HUD to DA.					

D-ATIS 134.25	INDIANAPOLIS APP CON 128.175 317.8	INDY TOWER 120.9 257.8	GND CON 121.9	CLNC DEL 128.75 257.8	CPDLC
-------------------------	--	----------------------------------	-------------------------	---------------------------------	-------



CATEGORY	A	B	C	D	HIRL all Rwys
S-ILS 14 *	996/24 200 (200-1/2)				TDZ/CL Rwys 5L and 5R
S-LOC 14	1140/24	344 (400-1/2)	1140/30	344 (400-3/4)	FAF to MAP 4.9 NM
 CIRCLING	1420-1 624 (700-1)		1420-1 3/4 624 (700-1 3/4)	1560-2 1/2 764 (800-2 1/2)	Knots Min:Sec
	60	90	120	150	180
	4:54	3:16	2:27	1:58	1:38

EC-2, 08 AUG 2024 to 05 SEP 2024

EC-2, 08 AUG 2024 to 05 SEP 2024