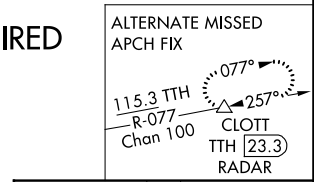
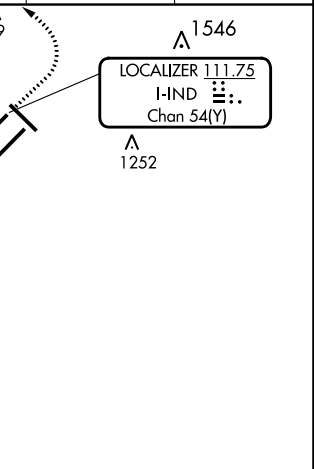
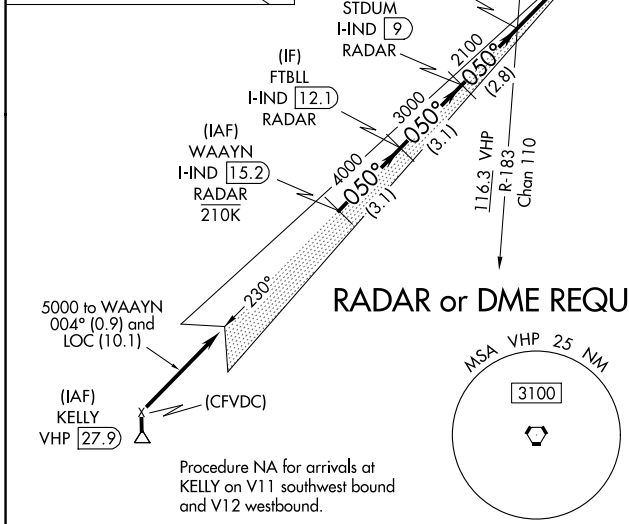
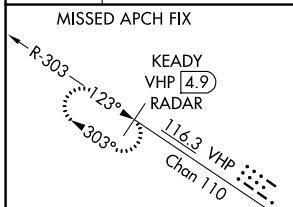


LOC/DME I-IND <b>111.75</b> Chan <b>54</b> (Y)	APP CRS <b>050°</b>	Rwy Idg <b>11200</b> TDZE <b>747</b> Apt Elev <b>796</b>
--	------------------------	--

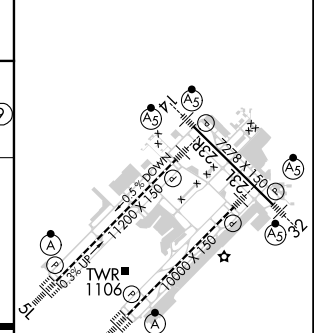
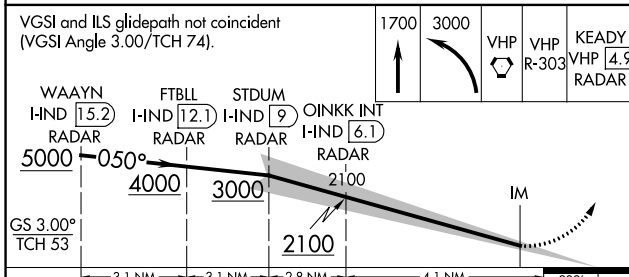
# ILS RWY 5L (SA CAT I)

INDIANAPOLIS INTL (IND)

Simultaneous approach authorized. Requires specific OPSPEC, MSPEC, or LOA approval and use of HUD to DH. DME or RADAR required.	ALSF-2 	MISSED APPROACH: Climb to 1700 then climbing left turn to 3000 direct VHP VORTAC then on VHP VORTAC R-303 to KEADY/VHP 4.9 DME/RADAR and hold.					
	<table border="1"> <tr> <td>D-ATIS <b>134.25</b></td> <td>INDIANAPOLIS APP CON <b>128.175 317.8</b></td> <td>INDY TOWER <b>120.9 257.8</b></td> <td>GND CON <b>121.9</b></td> <td>CLNC DEL <b>128.75 257.8</b></td> <td>CPDLC</td> </tr> </table>		D-ATIS <b>134.25</b>	INDIANAPOLIS APP CON <b>128.175 317.8</b>	INDY TOWER <b>120.9 257.8</b>	GND CON <b>121.9</b>	CLNC DEL <b>128.75 257.8</b>
D-ATIS <b>134.25</b>	INDIANAPOLIS APP CON <b>128.175 317.8</b>	INDY TOWER <b>120.9 257.8</b>	GND CON <b>121.9</b>	CLNC DEL <b>128.75 257.8</b>	CPDLC		



ELEV 796	<b>D</b>	TDZE 747
----------	----------	----------



CATEGORY	A	B	C	D
S-ILS 5L	RA 178/14		150 DA 897	

**SA CATEGORY I ILS - SPECIAL AIRCREW & AIRCRAFT CERTIFICATION REQUIRED**

HIRL all Rwws  
TDZ/CL Rwws 5L and 5R

EC-2, 03 OCT 2024 to 31 OCT 2024

EC-2, 03 OCT 2024 to 31 OCT 2024