

LOC/DME I-FVJ <b>111.15</b> Chan <b>48 (Y)</b>	APP CRS <b>230°</b>	Rwy Idg TDZE <b>790</b> Apt Elev <b>796</b>
------------------------------------------------------	------------------------	---------------------------------------------------

# ILS RWY 23L (SA CAT II)

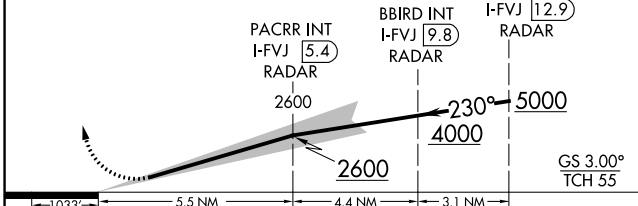
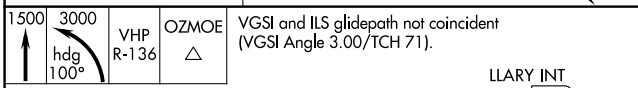
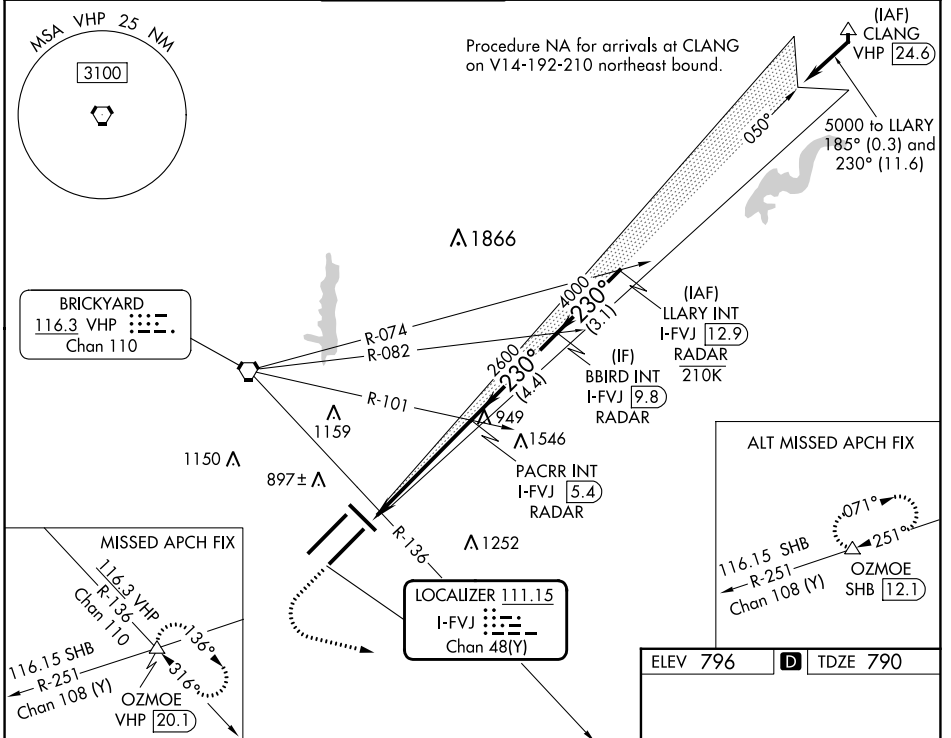
INDIANAPOLIS INTL (IND)

Simultaneous approach authorized. Requires specific OPSPEC, MSPEC, or LOA approval.

MALS

MISSED APPROACH: Climb to 1500 then climbing left turn to 3000 on heading 100° and on VHP VORTAC R-136 to OZMOE INT/VHP 20.1 DME and hold.

D-ATIS <b>134.25</b>	INDIANAPOLIS APP CON <b>128.175 317.8</b>	INDY TOWER <b>120.9 257.8</b>	GND CON <b>121.9</b>	CLNC DEL <b>128.75 257.8</b>	CPDLC
-------------------------	----------------------------------------------	----------------------------------	-------------------------	---------------------------------	-------



CATEGORY	A	B	C	D
S-ILS 23L	RA 105/12		100 DA 890	

ELEV 796 **D** TDZE 790

HIRL all Rwys  
TDZ/CL Rwys 5L and 5R

EC-2, 08 AUG 2024 to 05 SEP 2024

EC-2, 08 AUG 2024 to 05 SEP 2024

**SA CATEGORY II ILS- SPECIAL AIRCREW & AIRCRAFT CERTIFICATION REQUIRED**