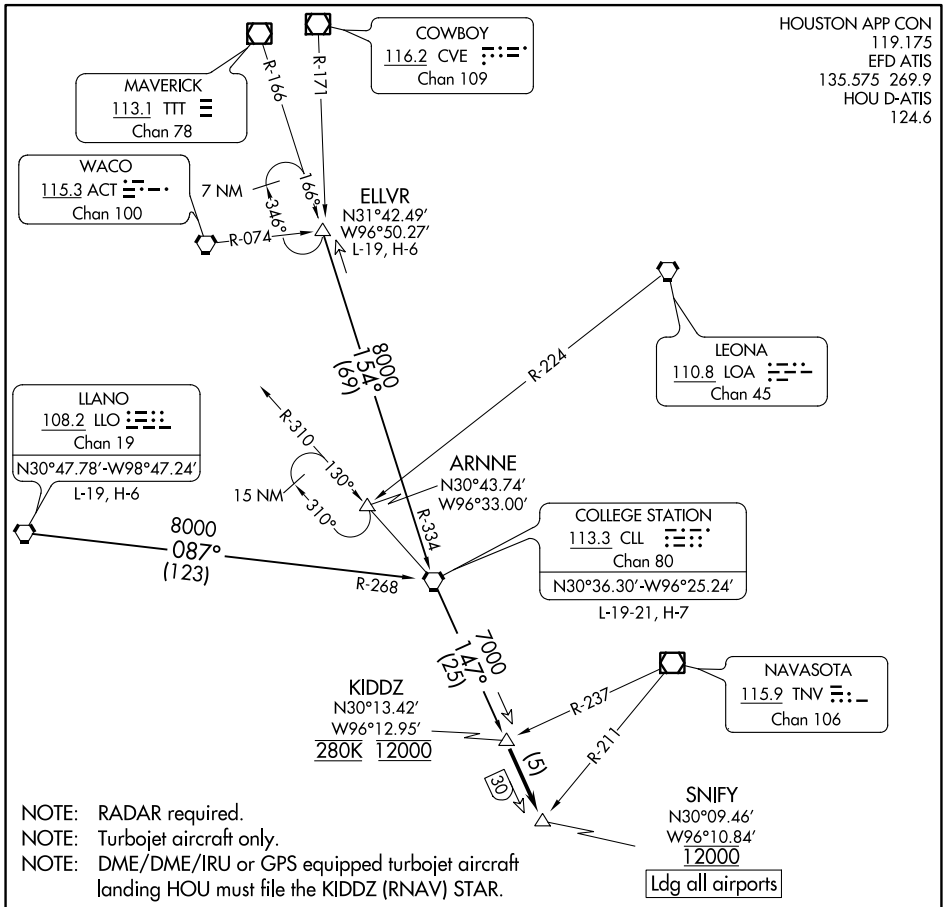


# SNIFY ONE ARRIVAL

HOUSTON, TEXAS



HOUSTON APP CON  
 119.175  
 EFD ATIS  
 135.575 269.9  
 HOU D-ATIS  
 124.6

SC-5, 21 MAR 2024 to 18 APR 2024

SC-5, 21 MAR 2024 to 18 APR 2024

## ARRIVAL ROUTE DESCRIPTION

COLLEGE STATION TRANSITION (CLL.SNIFY1): From over CLL VORTAC on CLL R-147 to KIDDZ. Thence....

ELLVR TRANSITION (ELLVR.SNIFY1): From over ELLVR on CLL R-334 to CLL VORTAC, then on CLL R-147 to KIDDZ. Thence....

LLANO TRANSITION (LLO.SNIFY1): From over LLO VORTAC on LLO R-087 and CLL R-268 to CLL VORTAC, then on CLL R-147 to KIDDZ. Thence....

...from KIDDZ on CLL R-147 to cross SNIFY at 12000.

Expect vectors to final approach course at or prior to SNIFY.

Ldg all airports

WILLIAM P HOBBY

ELLINGTON

TEXAS GULF COAST RGNL

SCHOLES INTL AT GALVESTON

NOTE: Chart not to scale.

# SNIFY ONE ARRIVAL

HOUSTON, TEXAS