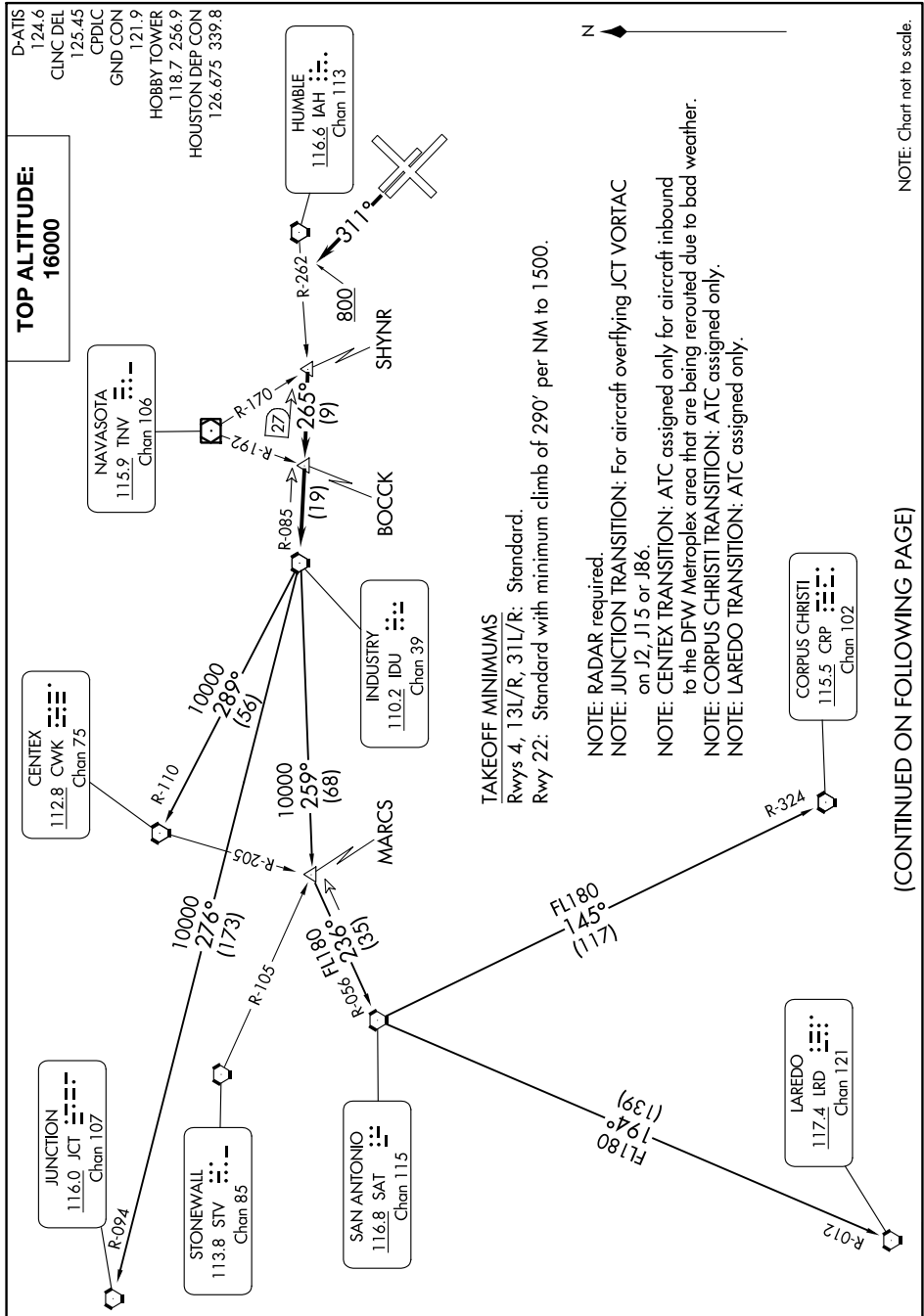


# INDUSTRY ONE DEPARTURE

SC-5, 05 SEP 2024 to 03 OCT 2024



**TOP ALTITUDE:**  
16000

D-ATIS 124.6  
CLNC DEL 125.45  
CPDIC  
GND CON 121.9  
HOBBY TOWER 118.7 256.9  
HOUSTON DEP CON 126.675 339.8

NAVASOTA  
115.9 TNV  
Chan 106

CENTEX  
112.8 CWK  
Chan 75

JUNCTION  
116.0 JCT  
Chan 107

STONEWALL  
113.8 STW  
Chan 85

SAN ANTONIO  
116.8 SAT  
Chan 115

INDUSTRY  
110.2 IDU  
Chan 39

LAREDO  
117.4 LRD  
Chan 121

CORPUS CHRISTI  
115.5 CRP  
Chan 102

HUMBLE  
116.6 IAH  
Chan 113

**TAKEOFF MINIMUMS**  
Rwys 4, 13L/R, 31L/R: Standard.  
Rwy 22: Standard with minimum climb of 290' per NM to 1500.

NOTE: RADAR required.  
NOTE: JUNCTION TRANSITION: For aircraft overflying JCT VORTAC on J2, J15 or J86.  
NOTE: CENTEX TRANSITION: ATC assigned only for aircraft inbound to the DFW Metroplex area that are being rerouted due to bad weather.  
NOTE: CORPUS CHRISTI TRANSITION: ATC assigned only.  
NOTE: LAREDO TRANSITION: ATC assigned only.

(CONTINUED ON FOLLOWING PAGE)

NOTE: Chart not to scale.

# INDUSTRY ONE DEPARTURE

SC-5, 05 SEP 2024 to 03 OCT 2024