

# HOODO SEVEN DEPARTURE (RNAV)

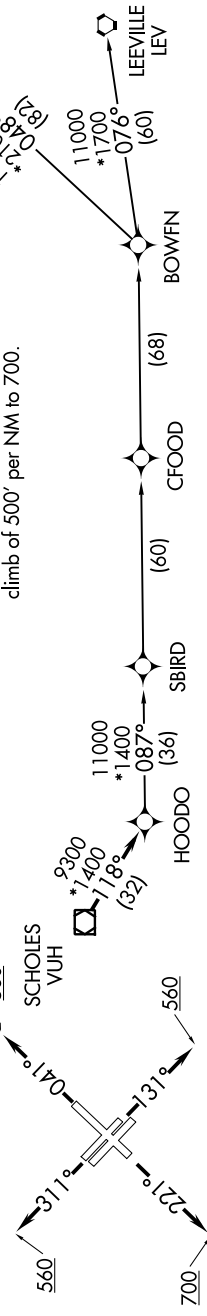
SC-5, 05 SEP 2024 to 03 OCT 2024

D-ATIS  
 124.6  
 CLNC DEL  
 125.45  
 CPDC  
 GND CON  
 121.9  
 HOBBY TOWER  
 118.7 256.9  
 HOUSTON DEP CON  
 127.125 269.075

- NOTE: RNAV 1.
- NOTE: RADAR required.
- NOTE: ATC assigned only.
- NOTE: DME/DME/IRU or GPS required.
- NOTE: For non-GPS equipped aircraft, LCH, ILLA, TBD, and LEV DME's must be operational.

### TAKEOFF MINIMUMS

Rwys 4, 13L/R, 31L/R: Standard with minimum climb of 500' per NM to 560.  
 Rwy 22: Standard with minimum climb of 500' per NM to 700.



TOP ALTITUDE:  
16000

### DEPARTURE ROUTE DESCRIPTION

- TAKEOFF RUNWAY 4: Climb on heading 041° to 560, for RADAR vectors to VUH VOR/DME, thence . . . .
- TAKEOFF RUNWAYS 13L/R: Climb on heading 131° to 560, for RADAR vectors to VUH VOR/DME, thence . . . .
- TAKEOFF RUNWAY 22: Climb on heading 221° to 700, for RADAR vectors to VUH VOR/DME, thence . . . .
- TAKEOFF RUNWAYS 31L/R: Climb on heading 311° to 560, for RADAR vectors to VUH VOR/DME, thence . . . .

. . . . on track 118° to HOODO, then on (transition). Maintain 16000.  
 Expect filed altitude 10 minutes after departure.

- BOWFN TRANSITION (HOODO7.BOWFN)
- CFOOD TRANSITION (HOODO7.CFOOD)
- HARVEY TRANSITION (HOODO7.HRV)
- LEEVILLE TRANSITION (HOODO7.LEV)
- SBIRD TRANSITION (HOODO7.SBIRD)



NOTE: Chart not to scale.