


# CRIED ONE DEPARTURE

AL-198 (FAA)


WILLIAM P HOBBY (HOU)  
HOUSTON, TEXAS


D-ATIS  
124.6  
CLNC DEL  
125.45  
CPDLC  
GND CON  
121.9  
HOBBY TOWER  
118.7 256.9  
HOUSTON DEP CON  
132.25 285.425

**TOP ALTITUDE:**  
**16000**

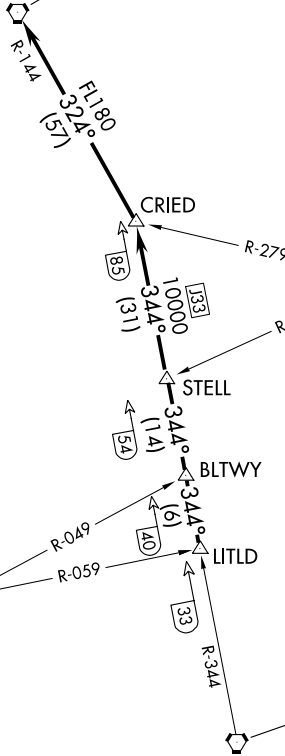
CEDAR CREEK  
114.8 CQY   
Chan 95

LUFKIN  
112.1 LFK   
Chan 58

NAVASOTA  
115.9 TNV   
Chan 106

HUMBLE  
116.6 IAH   
Chan 113

NOTE: RADAR required.

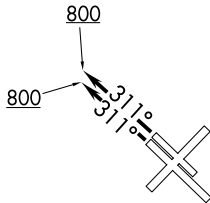


SC-5, 31 OCT 2024 to 28 NOV 2024

SC-5, 31 OCT 2024 to 28 NOV 2024

### TAKEOFF MINIMUMS

Rwys 4, 13L/R, 31L/R: Standard.  
Rwy 22: Standard with minimum climb of 290' per NM to 1500.



(CONTINUED ON FOLLOWING PAGE)

NOTE: Chart not to scale.

# CRIED ONE DEPARTURE