

# KARR SEVEN DEPARTURE (RNAV)

NOTE: Chart not to scale.

SC-5, 03 OCT 2024 to 31 OCT 2024

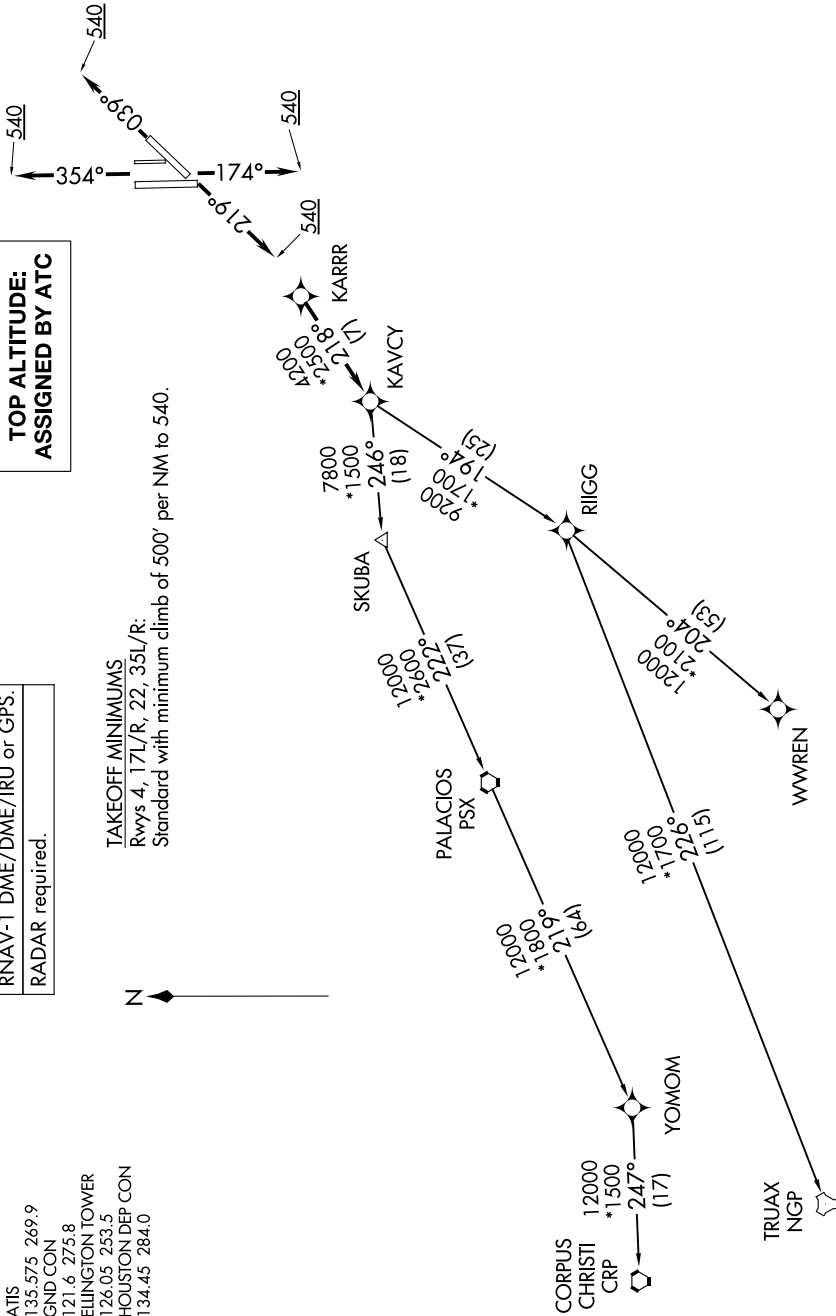
RNAV-1 DME/DME/IRU or GPS.
RADAR required.

**TOP ALTITUDE:  
ASSIGNED BY ATC**

ATIS 135.575 269.9  
 GND CON 121.6 275.8  
 ELLINGTON TOWER 126.05 253.5  
 HOUSTON DEP CON 134.45 284.0

**TAKEOFF MINIMUMS**

Rwys 4, 17L/R, 22, 35L/R:  
Standard with minimum climb of 500' per NM to 540.



(NARRATIVE ON FOLLOWING PAGE)

SC-5, 03 OCT 2024 to 31 OCT 2024

# KARR SEVEN DEPARTURE (RNAV)