

HI-TACAN RWY 35L

TACAN EFD Chan 31	APCH CRS 002°	Rwy Idg THRE Arprt Elev 9001 28 33
--------------------------	----------------------	---

AL-197 [USAF]

ELLINGTON (KEFD)

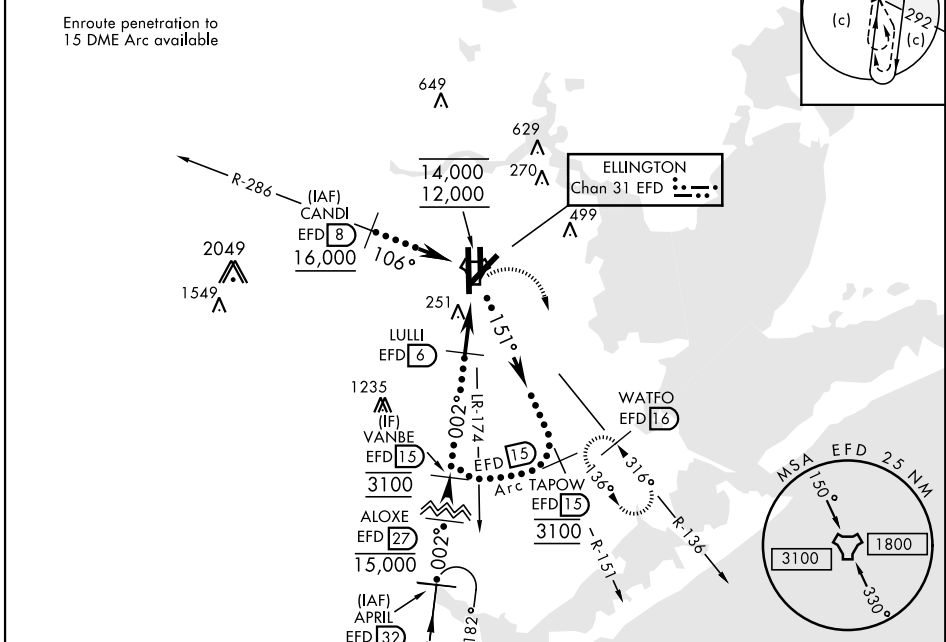
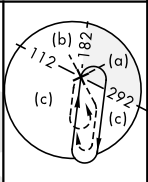
RADAR required for procedure entry

MALS F **A4** **MISSED APPROACH:** Climbing right turn to 3100 on EFD TACAN R-136 to WATFO/ EFD 16 DME and hold.

* When ALS inop, increase CAT CDE vis to 1 1/2 miles.
** Circling not authorized W of Rwy 17R-35L.

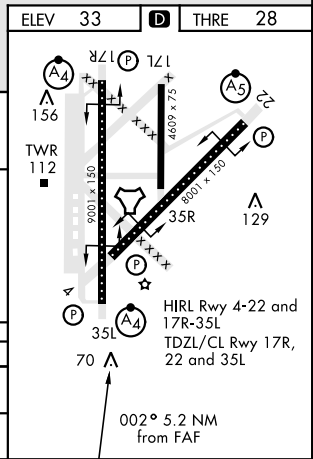
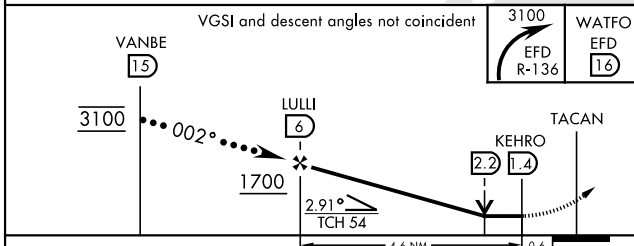
ATIS 135.575 269.9	HOUSTON APP CON 134.45 284.0	TOWER 126.05 253.5	GND CON 121.6 275.8
---------------------------	-------------------------------------	---------------------------	----------------------------

EFD TACAN	N29°36.36' W95°09.58'
CANDI	N29°39.24' W95°18.17'
APRIL	N29°04.53' W95°14.05'
WATFO	N29°23.90' W94°58.07'



EMERG SAFE ALT 100 NM 16,000

ELEV 33 **D** THRE 28



CATEGORY	C	D	E
S-35L *	520/60	492	(500-1 1/4)
CIRCLING**	580-1 1/2 547 (600-1 1/2)	640-2 607 (700-2)	700-2 1/4 667 (700-2 1/4)

HOUSTON, TEXAS 29°36'N-95°10'W ELLINGTON (KEFD)

HI-TACAN RWY 35L

SC-5, 03 OCT 2024 to 31 OCT 2024