

APP CRS 091°	Rwy Idg TDZE Apt Elev	9000 3864 3877
------------------------	-----------------------------	---

RNAV (RNP) Z RWY 9

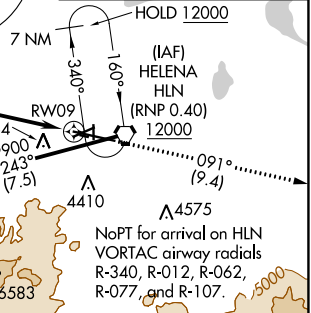
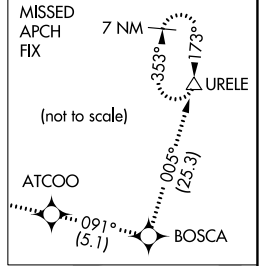
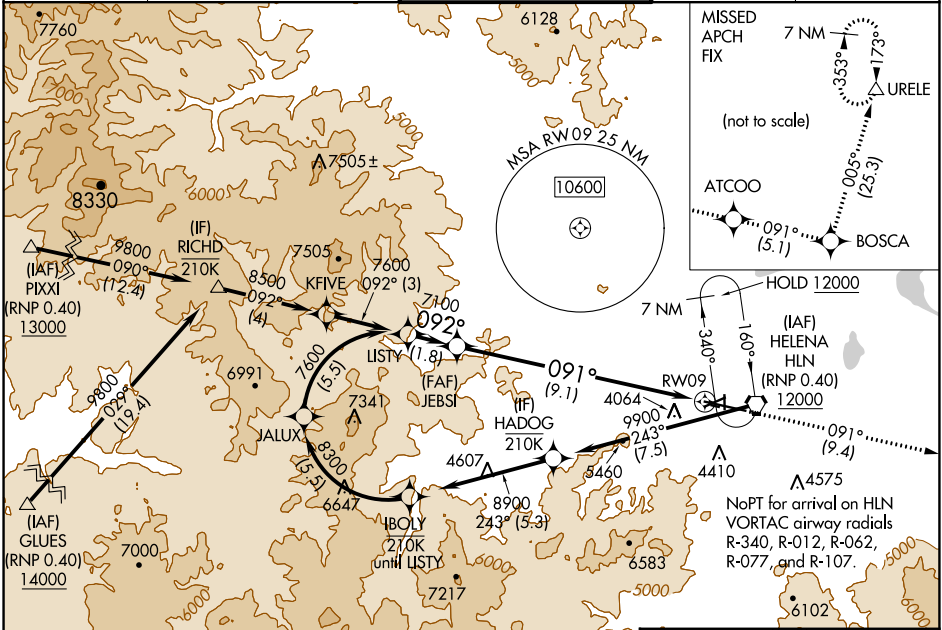
HELENA RGNL (HLN)

RNP AR APCH - GPS.

⚠️ -17°C For uncompensated Baro-VNAV systems, procedure NA below -28°C or above 54°C.

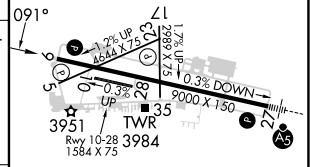
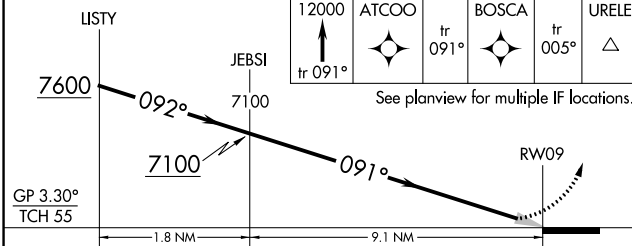
MISSED APPROACH: Climb to 12000 on track 091° to ATCOO and on track 091° to BOSCA and on track 005° to URELE and hold.

ATIS 120.4	HELENA APP CON * 119.5 229.4	HELENA TOWER * 118.3 (CTAF) 257.8	GND CON 121.9	UNICOM 122.95
----------------------	--	---	-------------------------	-------------------------



NoPT for arrival on HLN
VORTAC airway radials
R-340, R-012, R-062,
R-077, and R-107.

ELEV 3877	TDZE 3864
-----------	-----------



CATEGORY	A	B	C	D
RNP 0.11 DA		4224-1	360 (400-1)	
RNP 0.17 DA		4296-1¼	432 (500-1¼)	
RNP 0.30 DA		4489-1¾	625 (700-1¾)	

AUTHORIZATION REQUIRED

REIL Rwy 9, 17, and 35
MIRL Rwy 5-23 and 17-35
HIRL Rwy 9-27

NW-1, 31 OCT 2024 to 28 NOV 2024

NW-1, 31 OCT 2024 to 28 NOV 2024