

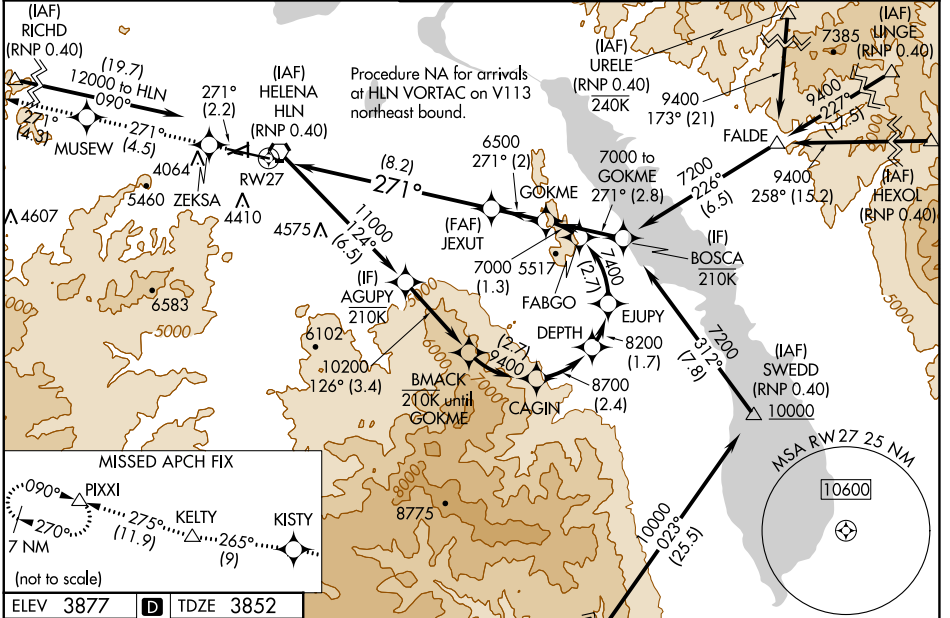
APP CRS	Rwy Idg	<b>9000</b>
<b>271°</b>	TDZE	<b>3852</b>
	Apt Elev	<b>3877</b>

# RNAV (RNP) Y RWY 27

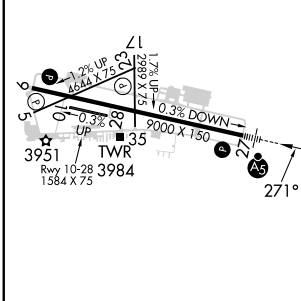
HELENA RGNL (HLN)

RNP AR APCH - GPS.		MALS R 	MISSED APPROACH: Climb to 12000 on the RNAV missed approach route to PIXXI and hold, continue climb-in-hold to 12000. *Missed approach requires minimum climb of 260 feet per NM to 7900; if unable to meet climb gradient, see RNAV (RNP) Z RWY 27.
-17°C For uncompensated Baro-VNAV systems, procedure NA below -28°C or above 54°C. Missed approach requires RNP less than 1.0. For inop ALS, increase RNP 0.30 DA* visibility all Cats to 1 1/2 SM.			

ATIS <b>120.4</b>	HELENA APP CON * <b>119.5 229.4</b>	HELENA TOWER * <b>118.3 (CTAF) 257.8</b>	GND CON <b>121.9</b>	UNICOM <b>122.95</b>
----------------------	--	---	-------------------------	-------------------------



ELEV 3877	<b>D</b>	TDZE 3852
-----------	----------	-----------



12000	ZEKSA	MUSEW	KISTY	KELTY	PIXXI	GOKME
tr 271°	tr 271°	tr 271°	tr 265°	tr 275°	tr 275°	
See planview for multiple IF locations.						
JEXUT			7000			
6500			6500			
RW27			GP 3.00°			
			TCH 55			
8.2 NM			2 NM			

CATEGORY	A	B	C	D
RNP 0.15 DA*	4284-3/4		432 (500-3/4)	
RNP 0.30 DA*	4321-1		469 (500-1)	

HELENA, MONTANA  
 Amdt 2 25JAN24  
 46°36'N-111°59'W  
**AUTHORIZATION REQUIRED**  
 HELENA RGNL (HLN)  
**RNAV (RNP) Y RWY 27**

NW-1, 31 OCT 2024 to 28 NOV 2024

NW-1, 31 OCT 2024 to 28 NOV 2024