

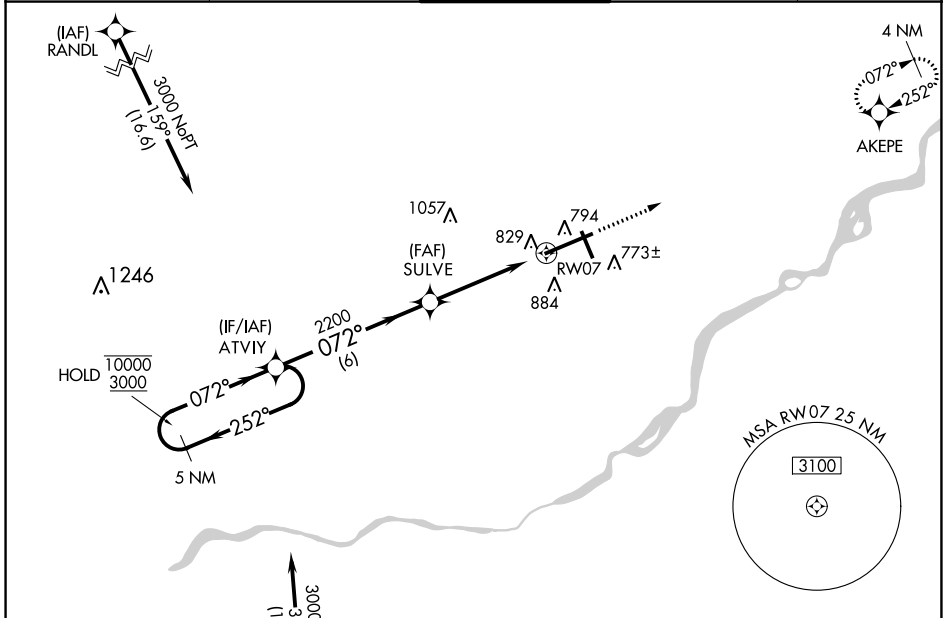
WAAS CH 99399 W07A	APP CRS 072°	Rwy Idg TDZE Apt Elev	10599 683 683
--	------------------------	-----------------------------	--

RNAV (GPS) RWY 7

EUGENE F KRANZ TOLEDO EXPRESS (TOL)

RNP APCH.	<p>T For uncompensated Baro-VNAV systems, LNAV/VNAV NA below -17°C or above 52°C.</p> <p>A For inop ALS, increase LPV all Cats visibility to RVR 5000. Increase LNAV/VNAV Cat E and LNAV Cat E visibility to 1$\frac{1}{8}$ SM.</p> <p>ASR</p>	<p>ALSf-2</p>	<p>MISSED APPROACH: Climb to 3000 direct AKEPE and hold.</p>
-----------	---	---------------	--

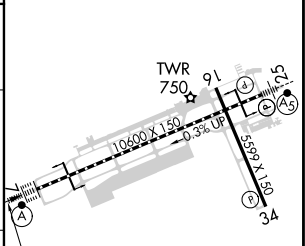
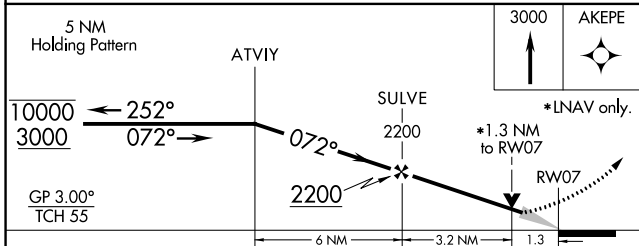
ATIS 118.75 290.225	TOLEDO APP CON 134.35 317.55	TOLEDO TOWER 118.1 285.4	GND CON 121.9 348.6	CLNC DEL 121.75 348.6
-------------------------------	--	------------------------------------	-------------------------------	---------------------------------



EC-2, 08 AUG 2024 to 05 SEP 2024

EC-2, 08 AUG 2024 to 05 SEP 2024

ELEV 683	D	TDZE 683
----------	----------	----------



CATEGORY	A	B	C	D	E
LPV DA		1018/40	335 (400- $\frac{3}{4}$)		
LNAV/VNAV DA		1129/50	446 (500-1)		
LNAV MDA	1140/24	457 (500- $\frac{1}{2}$)	1140/40 457 (500- $\frac{3}{4}$)	1140/50	457 (500-1)
C CIRCLING	1200-1	517 (600-1)	1300-1 $\frac{3}{4}$ 617 (700-1 $\frac{3}{4}$)	1360-2 $\frac{1}{4}$ 677 (700-2 $\frac{1}{4}$)	1360-2 $\frac{1}{2}$ 677 (700-2 $\frac{1}{2}$)

TDZ/CL Rwy 7
HIRL Rwy 7-25
MIRL Rwy 16-34
REIL Rwy 16 and 34