

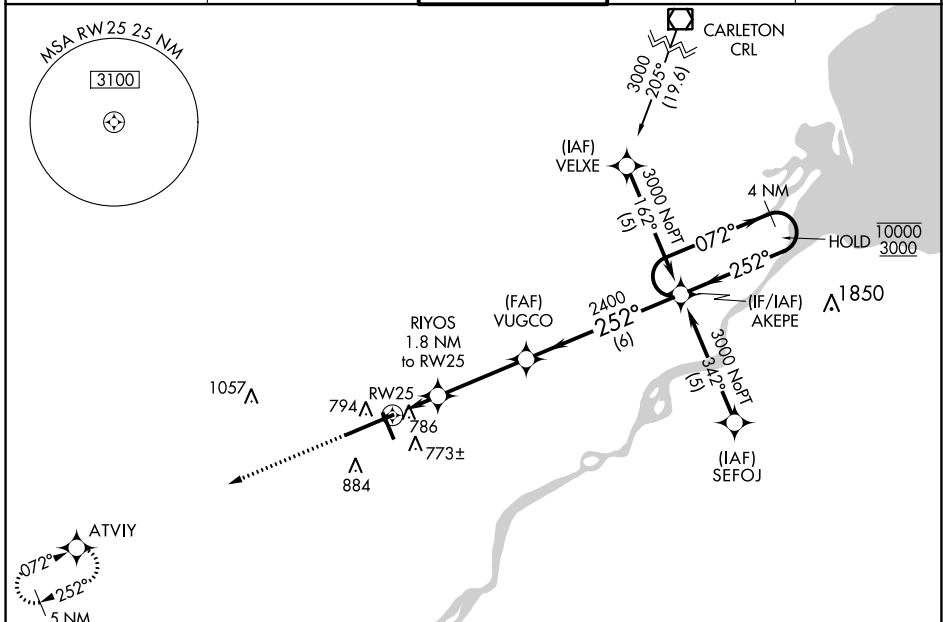
WAAS CH <b>48899</b> <b>W25A</b>	APP CRS <b>252°</b>	Rwy Idg <b>10599</b> TDZE <b>678</b> Apt Elev <b>683</b>
-------------------------------------	---------------------	--

# RNAV (GPS) RWY 25

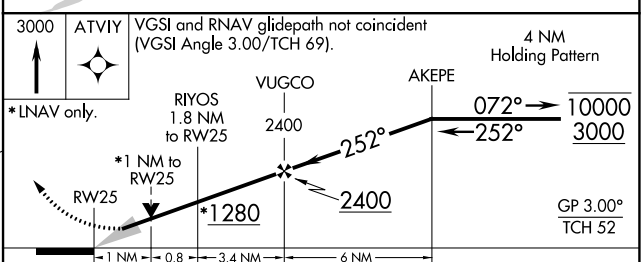
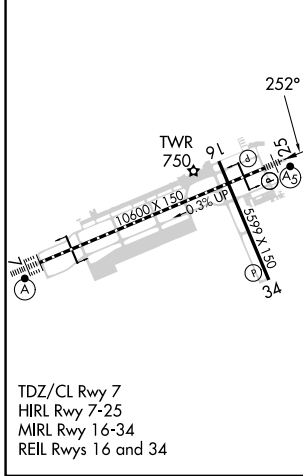
EUGENE F KRANZ TOLEDO EXPRESS (TOL)

RNP APCH.	<p>For uncompensated Baro-VNAV systems, LNAV/VNAV NA below -17°C or above 52°C. For inoperative ALS, increase LPV Cat E visibility to RVR 4000, LNAV/VNAV Cat E visibility to 1½ SM, LNAV Cat D/E visibility to RVR 6000.</p> <p>ASR ** RVR 1800 authorized with the use of FD or AP or HUD to DA.</p>	MALSR	MISSED APPROACH: Climb to 3000 direct ATVIY and hold.
-----------	--	-------	--

ATIS <b>118.75 290.225</b>	TOLEDO APP CON <b>134.35 317.55</b>	TOLEDO TOWER <b>118.1 285.4</b>	GND CON <b>121.9 348.6</b>	CLNC DEL <b>121.75 348.6</b>
-------------------------------	--	------------------------------------	-------------------------------	---------------------------------



ELEV 683	<b>D</b>	TDZE 678
----------	----------	----------



CATEGORY	A	B	C	D	E
LPV DA**	878/24 200 (200-½)				
LNAV/VNAV DA	1065/50 387 (400-1)				
LNAV MDA	1040/24 362 (400-½)		1040/50 362 (400-1)		
<b>C</b> CIRCLING	1200-1 517 (600-1)	1300-1¾ 617 (700-1¾)	1360-2¼ 677 (700-2¼)	1360-2½ 677 (700-2½)	

EC-2, 05 SEP 2024 to 03 OCT 2024

EC-2, 05 SEP 2024 to 03 OCT 2024