

# HI-TACAN RWY 7

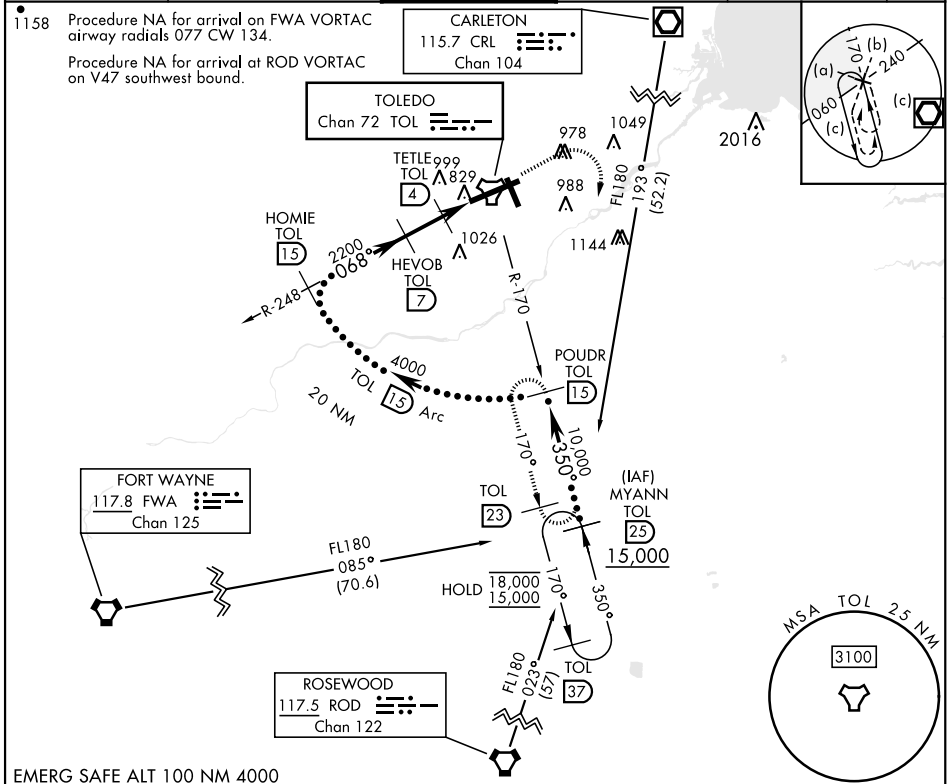
TACAN TOL Chan <b>72</b>	APCH CRS <b>068°</b>	Rwy ldg <b>10,599</b> TDZE <b>683</b> Arprt Elev <b>684</b>
-----------------------------	-------------------------	---

[USAF]

EUGENE F KRANZ TOLEDO EXPRESS (KTOL)

<p><b>V</b> * When ALS inop increase CAT E vis to 1<math>\frac{1}{2}</math> mile.</p>	<p>ALS-F-2</p>	<p>MISSED APPROACH: Climb to 3000 then right turn on TOL TACAN R-170 to POWDR/15 DME and hold.</p>
---	----------------	--

<p>ATIS <b>118.75 290.225</b></p>	<p>TOLEDO APP CON <b>126.1 317.55</b></p>	<p>TOLEDO TOWER <b>118.1 285.4</b></p>	<p>GND CON <b>121.9 348.6</b></p>	<p>CLNC DEL <b>121.75 348.6</b></p>	<p>ASR</p>
---------------------------------------	---	--	---------------------------------------	---	------------



EMERG SAFE ALT 100 NM 4000

<p>MYANN R-170 (25) POWDR R-170 (15) HOMIE R-248 (15) HEVOB (7) TETLE (4) TACAN</p>	<p>3000 ↑ TOL R-170</p>	<p>POWDR TOL (15)</p>	<p>ELEV 684 D TDZE 683</p>												
<p>15,000 350° 10,000 4000 068° 2200 1240 3 NM 2.4 NM</p>	<p>794 A TWR 750 91 769 ± A 599, 778 A 34 P 726 ± A 775 ± A</p>	<p>068°</p>	<p>HIRL Rwy 7-25 MIRL Rwy 16-34 REIL Rwy 16, 34 TDZL/CL Rwy 7 Rwy 7 ldg 10,599' Rwy 25 ldg 10,599'</p>												
<table border="1"> <tr> <th>CATEGORY</th> <th>C</th> <th>D</th> <th>E</th> </tr> <tr> <td>S-7 *</td> <td>1140/45</td> <td>457 (500-7%)</td> <td></td> </tr> <tr> <td>CIRCLING</td> <td>1360-2 677 (700-2)</td> <td>1400-2 1/4 717 (800-2 1/4)</td> <td>1400-2 1/2 717 (800-2 1/2)</td> </tr> </table>	CATEGORY	C	D	E	S-7 *	1140/45	457 (500-7%)		CIRCLING	1360-2 677 (700-2)	1400-2 1/4 717 (800-2 1/4)	1400-2 1/2 717 (800-2 1/2)			
CATEGORY	C	D	E												
S-7 *	1140/45	457 (500-7%)													
CIRCLING	1360-2 677 (700-2)	1400-2 1/4 717 (800-2 1/4)	1400-2 1/2 717 (800-2 1/2)												

# HI-TACAN RWY 7

EC-2, 31 OCT 2024 to 28 NOV 2024

EC-2, 31 OCT 2024 to 28 NOV 2024