

HI-TACAN RWY 25

TACAN TOL Chan 72	APCH CRS 260°	Rwy ldg 10,599 TDZE 678 Arprt Elev 684
----------------------	------------------	--

[USAF]

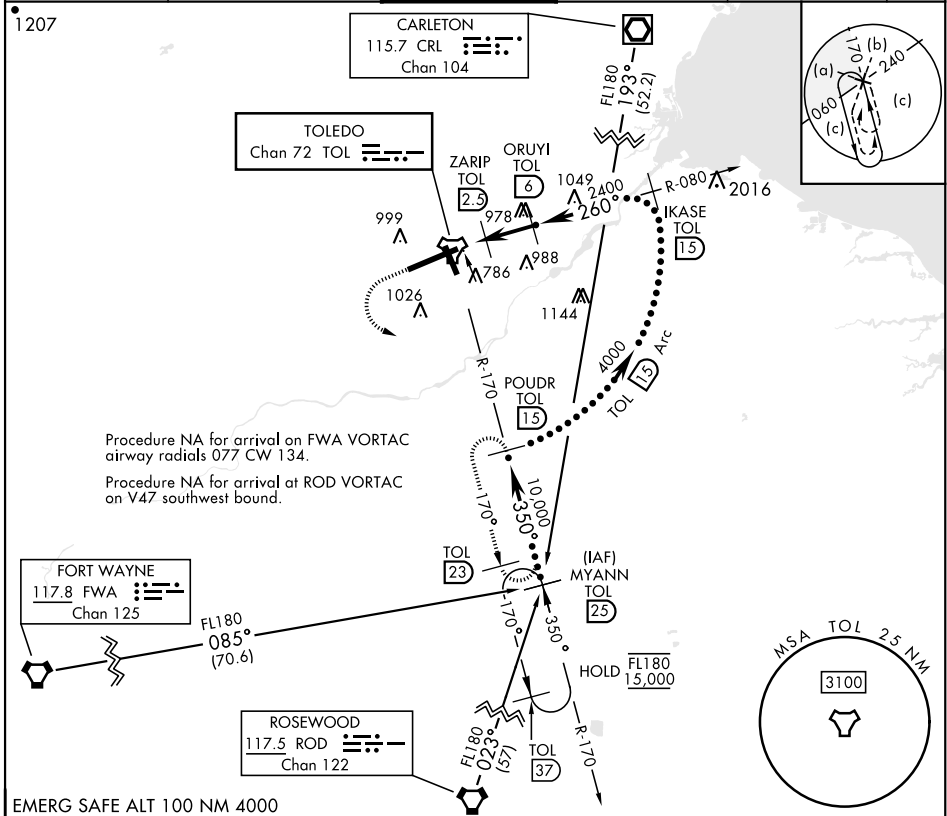
EUGENE F KRANZ TOLEDO EXPRESS (KTOL)

⚠ * When ALS inop increase CAT C vis to 1 mile.

Ⓜ MALSR **A5**

MISSED APPROACH: Climb to 3000 then left turn on TOL R-170 to POWDR and hold.

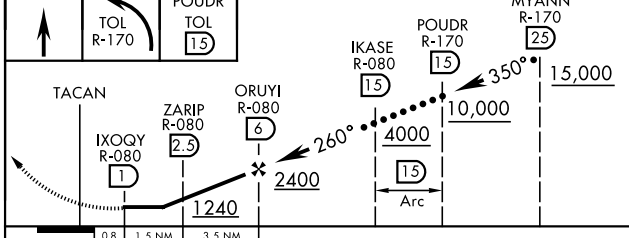
ATIS 118.75 290.225	TOLEDO APP CON 126.1 317.55	TOLEDO TOWER 118.1 285.4	GND CON 121.9 348.6	CLNC DEL 121.75 348.6	ASR
-------------------------------	---------------------------------------	------------------------------------	-------------------------------	---------------------------------	-----



EC-2, 05 SEP 2024 to 03 OCT 2024

EC-2, 05 SEP 2024 to 03 OCT 2024

EMERG SAFE ALT 100 NM 4000



ELEV 684	D	TDZE 678
----------	----------	----------

Rwy 7 ldg 10,599'
Rwy 25 ldg 10,599'

HIRL Rwy 7-25 726 ± A
MIRL Rwy 16-34 778
REIL Rwy 16, 34 775 ± A
TDZL/CL Rwy 7

TOLEDO, OHIO 41° 35'N-83° 48'W EUGENE F KRANZ TOLEDO EXPRESS (KTOL)
Amdt 4C 13AUG20

HI-TACAN RWY 25