

LOC I-GWO 111.3	APP CRS 182°	Rwy Idg TDZE Apt Elev	6501 145 162
---------------------------	------------------------	-----------------------------	---

ILS or LOC RWY 18

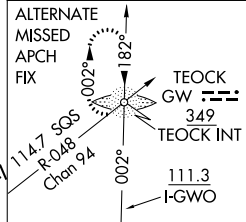
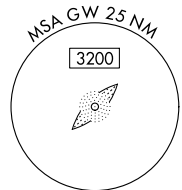
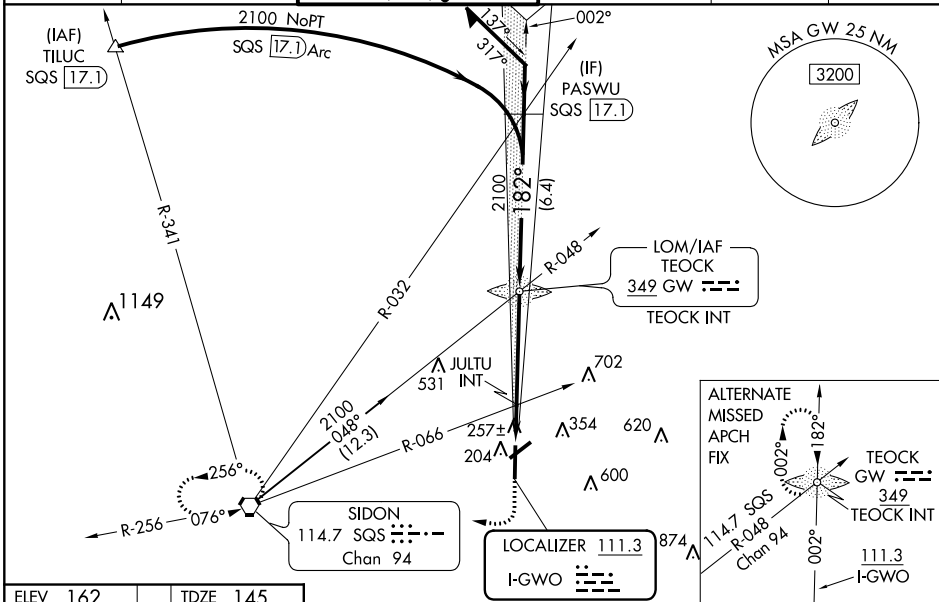
GREENWOOD-LEFLORE (GWO)

When local altimeter setting not received, use Greenville altimeter setting: increase DA to 580 feet and all visibilities ½ SM; increase all MDAs 120 feet and visibility S-LOC 18 Cat C/D ¼ SM and Circling Cat C ½ SM.
 ▼ For inop ALS, increase S-LOC 18 Cat A/B visibility to 1 SM, and Cat C/D to ½ SM, and JULTU FIX minimums S-LOC 18 all Cats to 1 SM. For inop ALS when using Greenville altimeter setting, increase S-ILS 18 all Cats visibility to ½ SM, and S-LOC 18 Cat A/B to 1 SM, and JULTU FIX minimums S-LOC 18 Cat A/B to 1 SM, and Cat C/D to ½ SM. Circling Rwy 5, 23, 27 NA at night.
 Rwy 18 helicopter visibility reduction below ¼ SM NA. Rwy 5, 23, 27 helicopter visibility reduction below 1 SM NA.

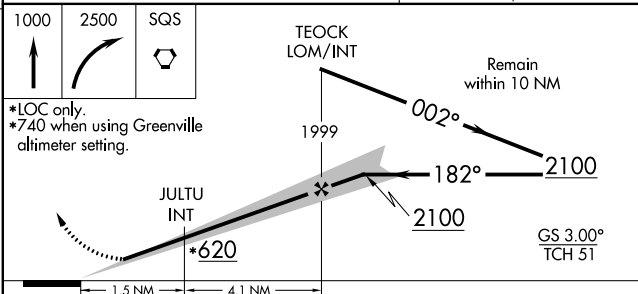
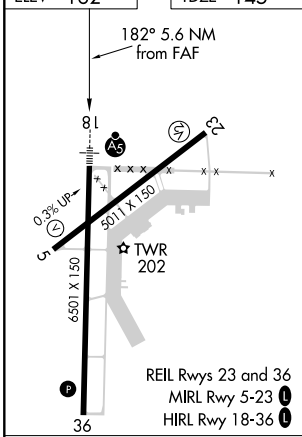


MISSED APPROACH:
Climb to 1000 then climbing right turn to 2500 direct SQS VORTAC and hold.

ASOS 119.975	MEMPHIS CENTER 132.5 259.1	GREENWOOD TOWER ★ 118.35 (CTAF) 0 367.6	GND CON 125.55 373.4	CLNC DEL 125.55	UNICOM 122.95
------------------------	--------------------------------------	---	--------------------------------	---------------------------	-------------------------



ELEV 162	TDZE 145
-----------------	-----------------



CATEGORY	A	B	C	D
S-ILS 18	471-¾ 326 (400-¾)			
S-LOC 18	620-¾	475 (500-¾)	620-1	475 (500-1)
C CIRCLING	760-1	598 (600-1)	1000-2 ½ 838 (900-2 ½)	1120-3 958 (1000-3)
JULTU FIX MINIMUMS (DUAL VOR RECEIVERS REQUIRED)				
S-LOC 18	520-¾ 375 (400-¾)			
C CIRCLING	760-1	598 (600-1)	1000-2 ½ 838 (900-2 ½)	1120-3 958 (1000-3)

FAF to MAP 5.6 NM					
Knots	60	90	120	150	180
Min:Sec	5:36	3:44	2:48	2:14	1:52

SC-4, 07 OCT 2021 to 04 NOV 2021

SC-4, 07 OCT 2021 to 04 NOV 2021