

LOC/DME I-GFN 111.15 Chan 48 (Y)	APP CRS 325°	Rwy Idg TDZE Apt Elev 6380 902 926
---	------------------------	--

ILS Y or LOC Y RWY 32

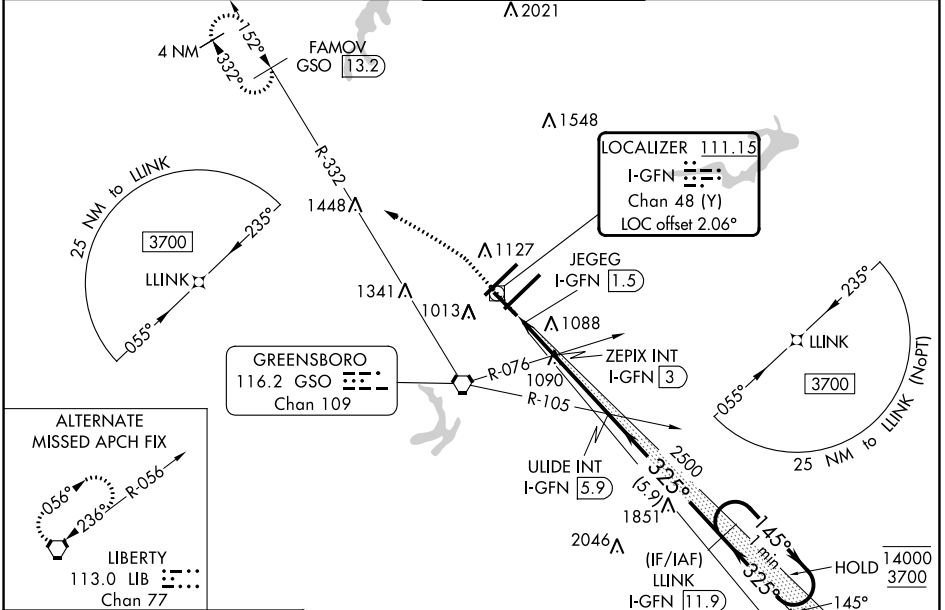
PIEDMONT TRIAD INTL (GSO)

RNAV 1-GPS or RADAR required for procedure entry.
DME required.

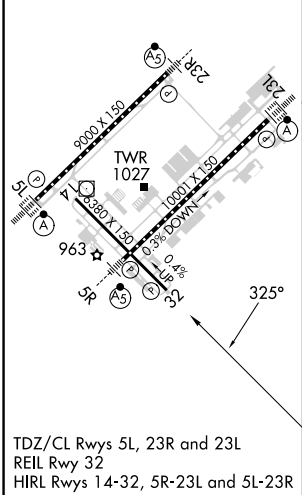
▼
▲ Rwy 32 helicopter visibility reduction below $\frac{3}{4}$ SM NA.

MISSED APPROACH: Climb to 1400 then climbing left turn to 3700 on heading 307° and GSO VORTAC R-332 to FAMOV/GSO 13.2 DME and hold.

D-ATIS 128.55	GREENSBORO APP CON 124.35 269.225 126.6 327.075 (050°-249°)	GREENSBORO TOWER 119.1 290.325	GND CON 121.9 348.6	CLNC DEL 121.75
-------------------------	---	--	-------------------------------	---------------------------



ELEV 926	D	TDZE 902
----------	----------	----------



1400	3700	GSO R-332	FAMOV GSO 13.2	ULIDE INT I-GFN 5.9	LLINK I-GFN 11.9	One Minute Holding Pattern	
hdg 307°							
		JEGEG I-GFN 1.5	ZEPIX INT I-GFN 3	2500		145° → 4000 ← 325° 3700	
		1600	2500			GS 3.00° TCH 53	
		0.4	1 NM	0.6 NM	2.9 NM	5.9 NM	
CATEGORY	A		B		C		D
S-ILS 32			1152- $\frac{3}{4}$		250 (300- $\frac{3}{4}$)		
S-LOC 32	1400-1	498 (500-1)			1400- $\frac{1}{8}$	498 (500- $\frac{1}{8}$)	
C CIRCLING	1440-1	514 (600-1)			1700- $\frac{2}{4}$	1700- $\frac{2}{2}$	774 (800- $\frac{2}{4}$) 774 (800- $\frac{2}{2}$)

SE-2, 03 OCT 2024 to 31 OCT 2024

SE-2, 03 OCT 2024 to 31 OCT 2024