

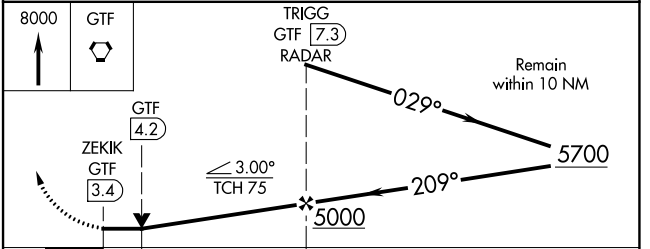
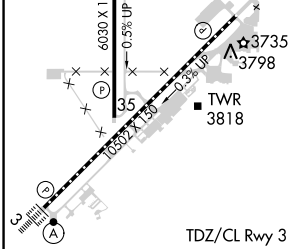
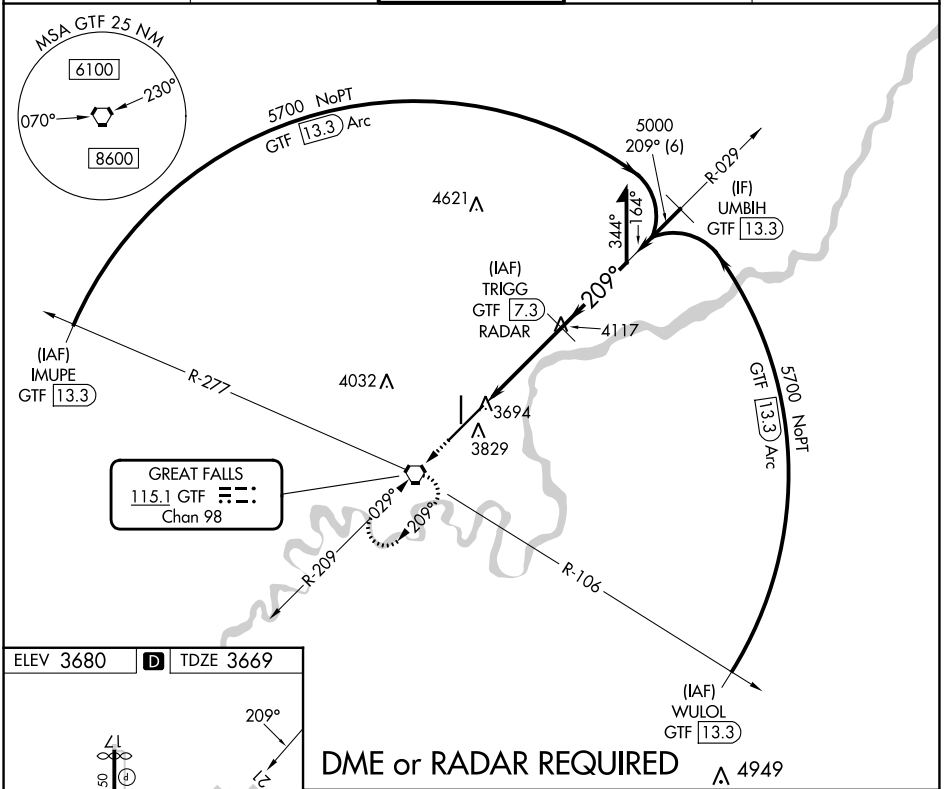
VORTAC GTF 115.1 Chan 98	APP CRS 209°	Rwy Idg 10502 TDZE 3669 Apt Elev 3680
--	------------------------	--

VOR RWY 21

GREAT FALLS INTL (GTF)

DME or RADAR required.		MISSED APPROACH: Climb to 8000 direct GTF VORTAC and hold, continue climb-in-hold to 8000.		
------------------------	--	--	--	--

ATIS 126.6 269.0	GREAT FALLS APP CON 128.6 379.175	GREAT FALLS TOWER 118.7 282.2	GND CON 121.7 348.6	CLNC DEL 121.7 348.6
----------------------------	---	---	-------------------------------	--------------------------------



ELEV 3680		D TDZE 3669			
TDZ/CL Rwy 3 REIL Rwy 21 HIRL Rwy 3-21 MIRL Rwy 17-35		CATEGORY A B C D S-21 4000/55 331 (400-1)			
FAF to MAP 4 NM					
Knots	60	90	120	150	180
Min:Sec	4:00	2:40	2:00	1:36	1:20
CIRCLING	4140-1	460 (500-1)	4340-1 ³ / ₄ 660 (700-1 ³ / ₄)	4420-2 ¹ / ₄ 740 (800-2 ¹ / ₄)	

NW-1, 31 OCT 2024 to 28 NOV 2024

NW-1, 31 OCT 2024 to 28 NOV 2024