

APP CRS **212°**
 Rwy Idg **10502**
 TDZE **3669**
 Apt Elev **3680**

RNAV (RNP) Z RWY 21

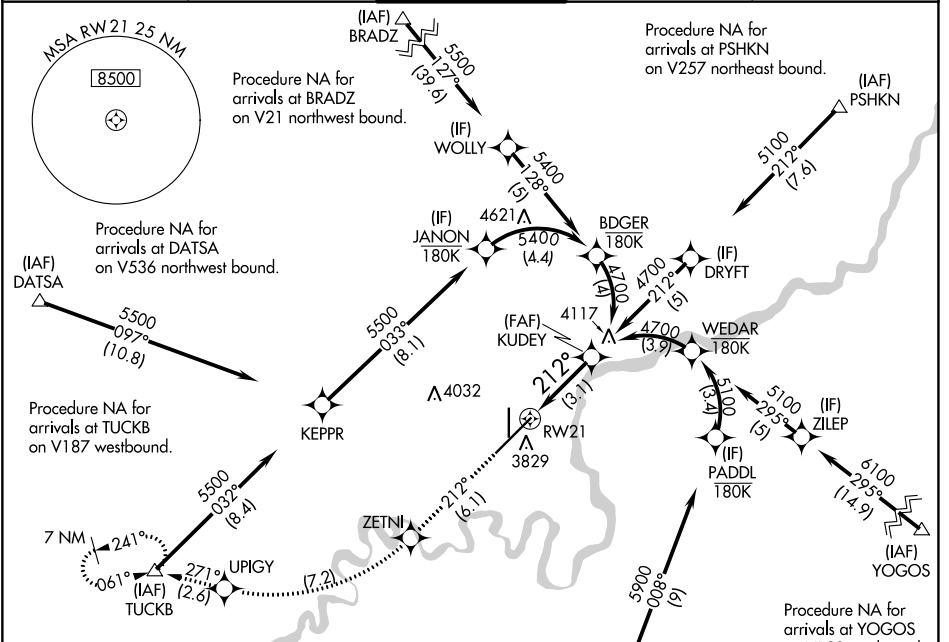
GREAT FALLS INTL (GTF')

RNP AR APCH - GPS.

For uncompensated Baro-VNAV systems, procedure NA below -24°C or above 54°C.

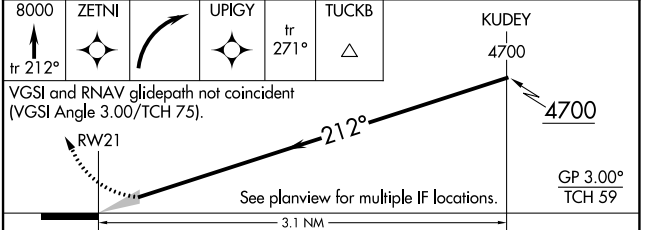
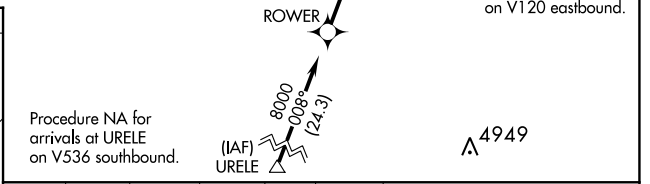
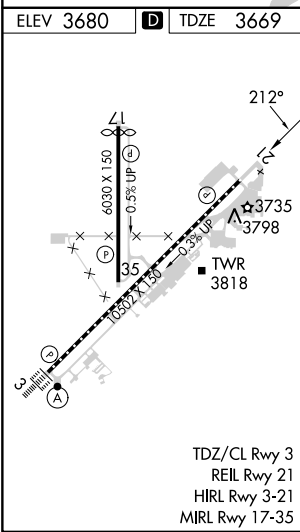
MISSED APPROACH: Climb to 8000 on track 212° to ZETNI, right turn to UPIGY and on track 271° to TUCKB and hold, continue climb-in-hold to 8000.

ATIS 126.6 269.0	GREAT FALLS APP CON 128.6 379.175	GREAT FALLS TOWER 118.7 282.2	GND CON 121.7 348.6	CLNC DEL 121.7 348.6
----------------------------	---------------------------------------------	-----------------------------------------	-------------------------------	--------------------------------



NW-1, 31 OCT 2024 to 28 NOV 2024

NW-1, 31 OCT 2024 to 28 NOV 2024



CATEGORY	A	B	C	D
RNP 0.10 DA		3942/45	273 (300-7%)	
RNP 0.30 DA		3992/50	323 (400-1)	

AUTHORIZATION REQUIRED