

WAAS CH <b>82240</b> <b>W35A</b>	APP CRS <b>347°</b>	Rwy Idg TDZE Apt Elev	<b>5400</b> <b>3668</b> <b>3680</b>
--	------------------------	-----------------------------	---

# RNAV (GPS) RWY 35

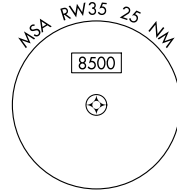
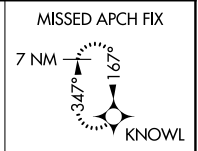
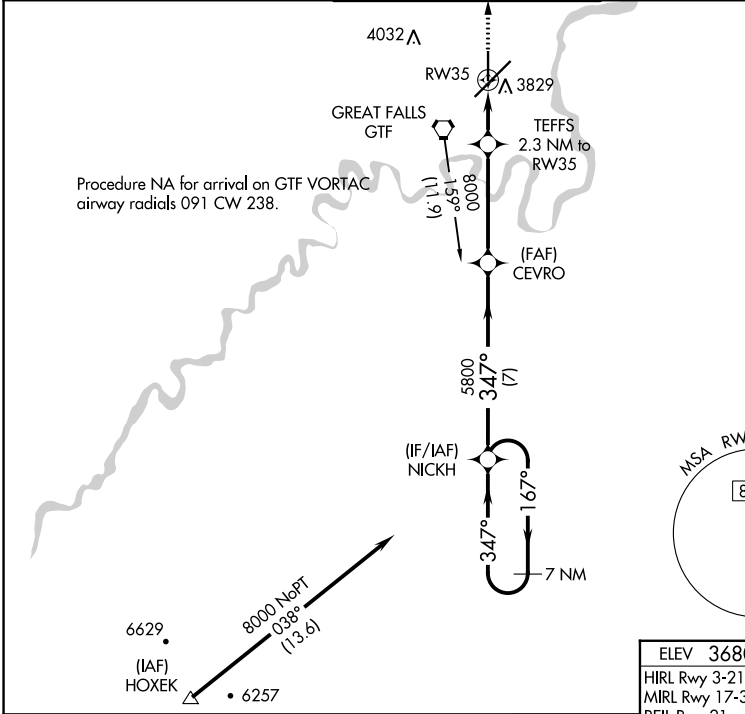
GREAT FALLS INTL (GTF)

RNP APCH - GPS.

**⚠** For uncompensated Baro-VNAV systems, LNAV/VNAV NA below -26°C or above 52°C. Rwy 35 helicopter visibility reduction below ¼ SM NA.

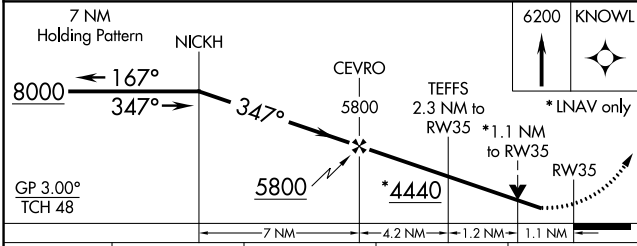
MISSED APPROACH: Climb to 6200 direct KNOWL and hold.

ATIS <b>126.6 269.0</b>	GREAT FALLS APP CON <b>128.6 379.175</b>	GREAT FALLS TOWER <b>118.7 282.2</b>	GND CON <b>121.7 348.6</b>	CLNC DEL <b>121.7 348.6</b>
----------------------------	---	---	-------------------------------	--------------------------------



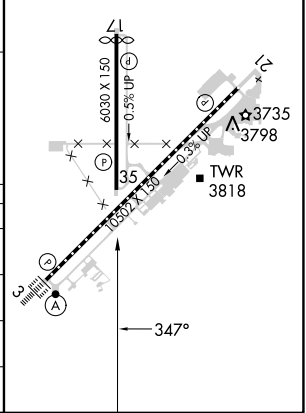
NW-1, 31 OCT 2024 to 28 NOV 2024

NW-1, 31 OCT 2024 to 28 NOV 2024



ELEV 3680	<b>D</b>	TDZE 3668
-----------	----------	-----------

HIRL Rwy 3-21  
MIRL Rwy 17-35  
REIL Rwy 21  
TDZ/CL Rwy 3



CATEGORY	A	B	C	D
LPV DA		3918-¾	250 (300-¾)	
LNAV/VNAV DA		4086-1½	418 (500-1½)	
LNAV MDA	4080-1	412 (400-1)	4080-1½	412 (400-1½)
<b>C</b> CIRCLING	4140-1	460 (500-1)	4340-1¾ 660 (700-1¾)	4420-2¼ 740 (800-2¼)