

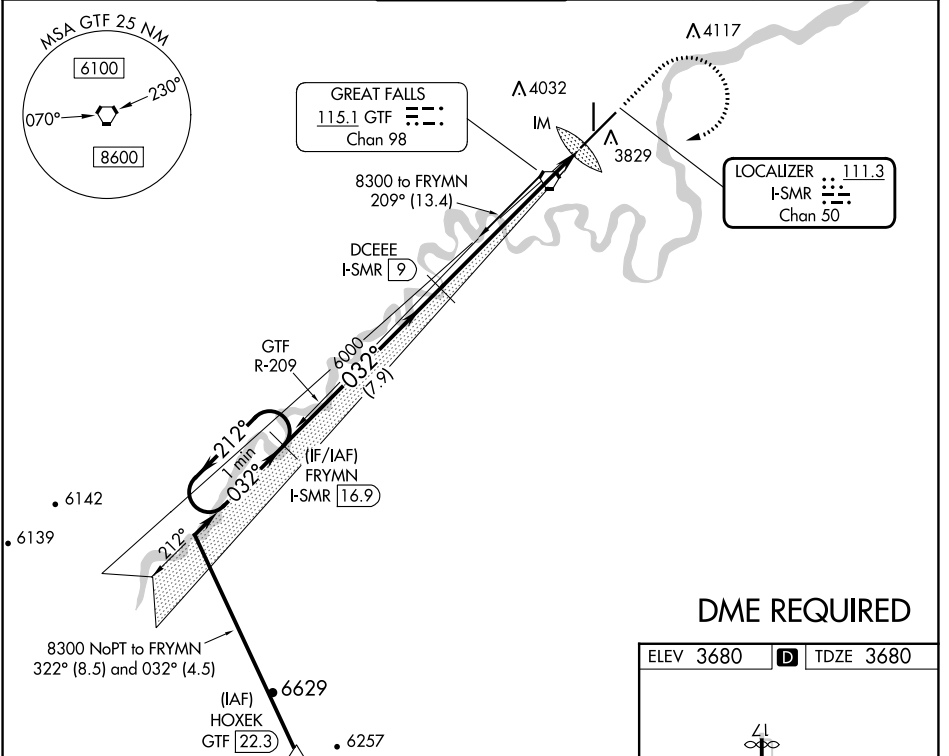
LOC/DME I-SMR 111.3 Chan 50	APP CRS 032°	Rwy Idg 10502 TDZE 3680 Apt Elev 3680
--	------------------------	--

ILS or LOC RWY 3

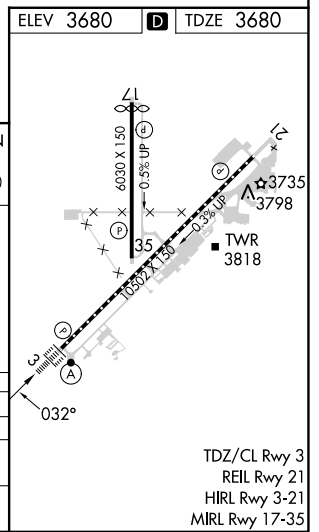
GREAT FALLS INTL (GTF)

	DME required.		MISSED APPROACH: Climb to 5000 then climbing right turn to 8300 direct GTF VORTAC then on GTF VORTAC R-209 to FRYMN/I-SMR 16.9 DME and hold.	

ATIS 126.6 269.0	GREAT FALLS APP CON 128.6 379.175	GREAT FALLS TOWER 118.7 282.2	GND CON 121.7 348.6	CLNC DEL 121.7 348.6
----------------------------	---	---	-------------------------------	--------------------------------



DME REQUIRED



VGSI and ILS glidepath not coincident (VGSI Angle 3.00/TCH 70).

One Minute Holding Pattern

FRYMN I-SMR 16.9

Use I-SMR DME when on the localizer course.

GS 3.00° TCH 54

6000

*I-SMR 3.2

I-SMR 1.9

*LOC only

7.9 NM

5.9 NM

1.1

0.1

CATEGORY	A	B	C	D
S-ILS 3	3880/18		200 (200-½)	
S-LOC 3	4140/24	460 (500-½)	4140/45	460 (500-¾)
C CIRCLING	4140-1	460 (500-1)	4340-1¾ 660 (700-1¾)	4420-2¼ 740 (800-2¼)

TDZ/CL Rwy 3
REIL Rwy 21
HIRL Rwy 3-21
MIRL Rwy 17-35

NW-1, 31 OCT 2024 to 28 NOV 2024

NW-1, 31 OCT 2024 to 28 NOV 2024