


LOC/DME I-SMR <b>111.3</b> Chan 50	APP CRS <b>032°</b>	Rwy Idg <b>10502</b> TDZE <b>3680</b> Apt Elev <b>3680</b>
--	------------------------	--

# ILS RWY 3 (SA CAT I)

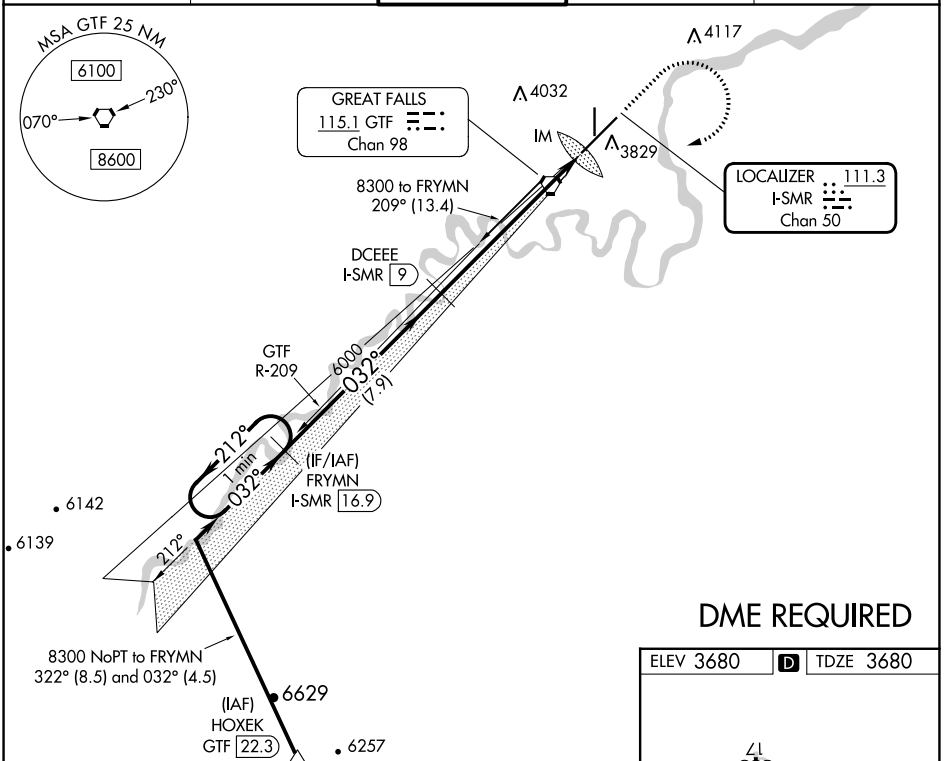
GREAT FALLS INTL (GTF)

**⚠** Requires specific OPSPEC, MSPEC, or LOA approval and use of HUD to DH. DME required.

**ALSF-2** 

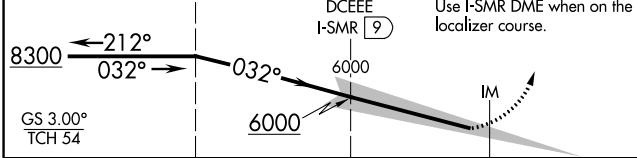
**MISSED APPROACH:** Climb to 5000 then climbing right turn to 8300 direct GTF VORTAC then on GTF VORTAC R-209 to FRYMNI/I-SMR 16.9 DME and hold.

ATIS <b>126.6 269.0</b>	GREAT FALLS APP CON <b>128.6 379.175</b>	GREAT FALLS TOWER <b>118.7 282.2</b>	GND CON <b>121.7 348.6</b>	CLNC DEL <b>121.7 348.6</b>
----------------------------	---	---	-------------------------------	--------------------------------



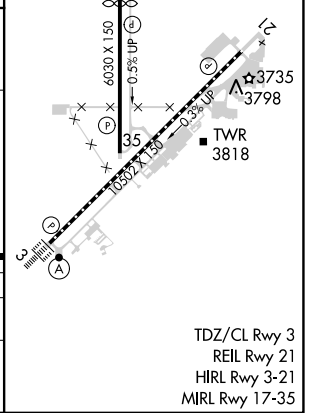
VGSI and ILS glidepath not coincident (VGSI Angle 3.00/TCH 70).  
One Minute Holding Pattern FRYMNI I-SMR 16.9

5000 8300 GTF GTF FRYMNI  
↑ ↪ ⬡ ⬡ I-SMR  
DCEEE I-SMR 9 Use I-SMR DME when on the localizer course.



CATEGORY	A	B	C	D
S-ILS 3	RA 140/14 150 DA 3830			

**SA CATEGORY I ILS-SPECIAL AIRCREW & AIRCRAFT CERTIFICATION REQUIRED**



TDZ/CL Rwy 3  
REIL Rwy 21  
HIRL Rwy 3-21  
MIRL Rwy 17-35

NW-1, 31 OCT 2024 to 28 NOV 2024

NW-1, 31 OCT 2024 to 28 NOV 2024