

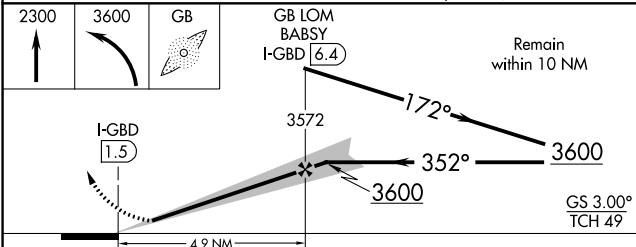
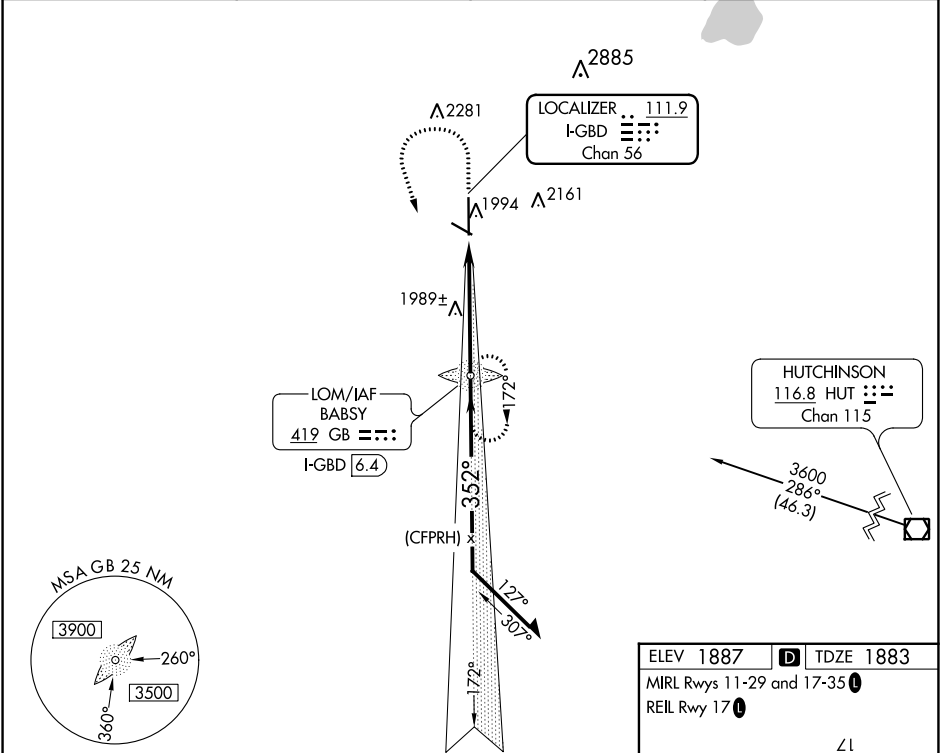
LOC/DME I-GBD 111.9 Chan 56	APP CRS 352°	Rwy Idg 7852 TDZE 1883 Apt Elev 1887
---	------------------------	---

ILS or LOC RWY 35

GREAT BEND MUNI (GBD)

ADF required. ▽ ▲ NA	MALSR AS	MISSED APPROACH: Climb to 2300 then climbing left turn to 3600 direct BABSY LOM and hold.
----------------------------	-------------	---

AWOS-3PT 119.275	KANSAS CITY CENTER 118.8 322.425	UNICOM 122.8 (CTAF) ①
----------------------------	--	---------------------------------



ELEV 1887 **D** TDZE 1883
 MIRL Rwy 11-29 and 17-35 **①**
 REIL Rwy 17 **①**

Diagram showing the runway layout and approach path. Key features include:

- Runway 35: 7852 x 100, 1945.
- Runway 17: 4706 x 75.
- Altitudes: 1945, 35.
- Angles: 352°.
- FAF to MAP 4.9 NM.

Knots	60	90	120	150	180
Min:Sec	4:54	3:16	2:27	1:58	1:38

CATEGORY	A	B	C	D
S-ILS 35	2083-1/2		200 (200-1/2)	
S-LOC 35	2260-1/2	377 (400-1/2)	2260-5/8	377 (400-5/8)
CIRCLING	2320-1 433 (500-1)	2340-1 453 (500-1)	2520-1 3/4 633 (700-1 3/4)	2640-2 1/2 753 (800-2 1/2)

NC-2, 31 OCT 2024 to 28 NOV 2024

NC-2, 31 OCT 2024 to 28 NOV 2024