

VOR/DME GRI <b>112.0</b> Chan 57	APP CRS <b>313°</b>	Rwy Idg TDZE <b>1844</b> Apt Elev <b>1847</b>
--	------------------------	---

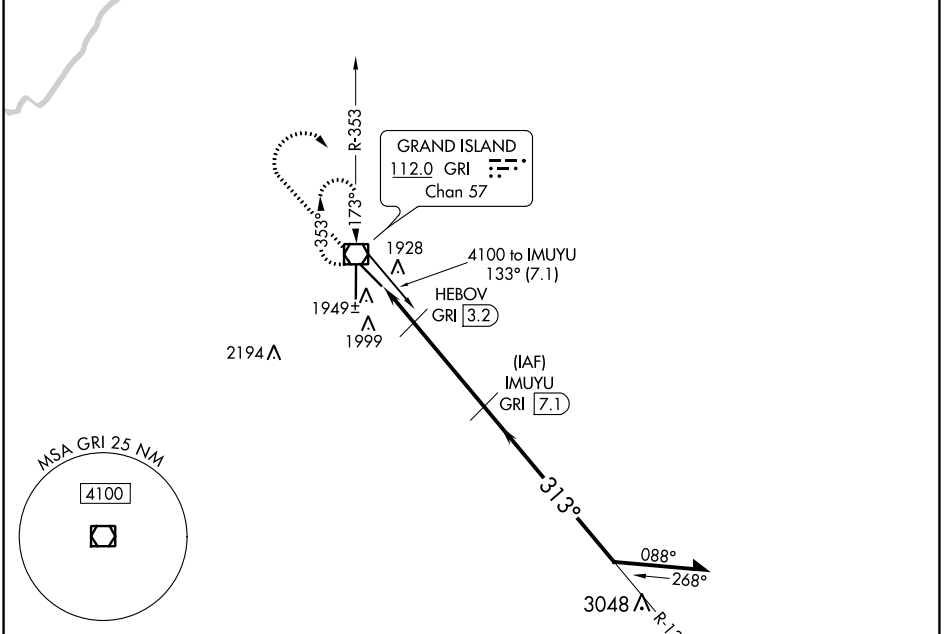
# VOR/DME RWY 31

CENTRAL NEBRASKA RGNL (GRI)

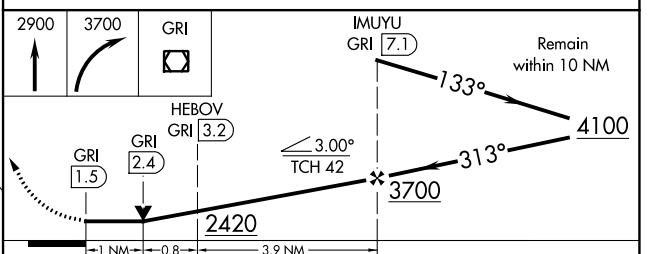
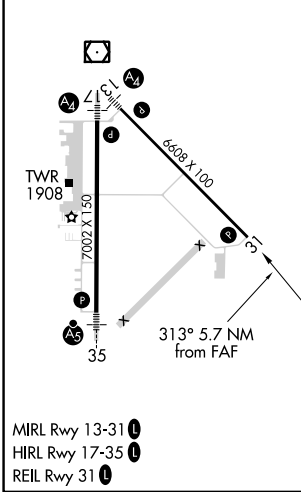
**⚠** When local altimeter setting not received, use Aurora altimeter setting and increase all MDA 60 feet, increase Circling Cats C/D visibility 1/4 SM. VDP NA when using Aurora altimeter setting.

**⚠** MISSED APPROACH: Climb to 2900 then climbing right turn to 3700 direct GRI VOR/DME and hold.

ATIS <b>127.4</b>	MINNEAPOLIS CENTER <b>119.4 278.8</b>	GRAND ISLAND TOWER* <b>118.2 (CTAF) 259.3</b>	GND CON <b>121.9 259.3</b>	CLNC DEL <b>121.9</b> <b>126.05 (when tower closed)</b>	UNICOM <b>122.95</b>
----------------------	--	--	-------------------------------	---	-------------------------



ELEV 1847	<b>D</b>	TDZE 1844
-----------	----------	-----------



CATEGORY	A	B	C	D
S-31	2200-1	356 (400-1)	2200-1 1/4	2200-1 1/4 356 (400-1 1/4)
CIRCLING	2300-1	453 (500-1)	2400-1 1/2 553 (600-1 1/2)	2560-2 1/4 713 (800-2 1/4)

NC-2, 08 AUG 2024 to 05 SEP 2024

NC-2, 08 AUG 2024 to 05 SEP 2024