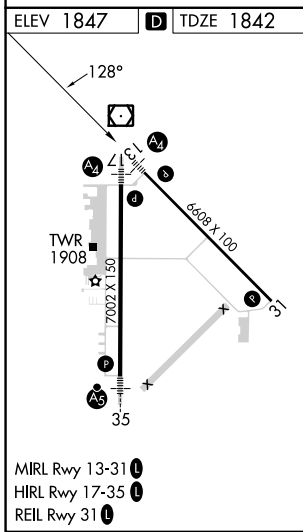
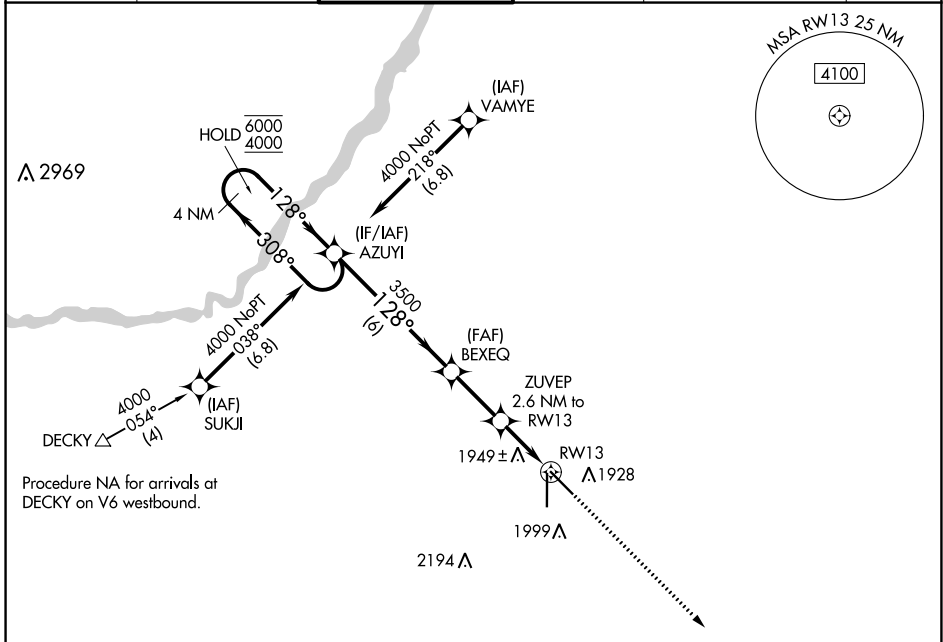


APP CRS	Rwy Idg	<b>6608</b>
<b>128°</b>	TDZE	<b>1842</b>
	Apt Elev	<b>1847</b>

# RNAV (GPS) RWY 13

CENTRAL NEBRASKA RGNL (GRI)

RNP APCH - GPS.			MAL S		MISSED APPROACH: Climb to 4100 direct AGEKY and hold.	
ATIS	MINNEAPOLIS CENTER	GRAND ISLAND TOWER*	GND CON	CLNC DEL	UNICOM	
<b>127.4</b>	<b>119.4 278.8</b>	<b>118.2 (CTAF) 0 259.3</b>	<b>121.9 259.3</b>	<b>126.05</b> (when tower closed)	<b>122.95</b>	



VGS1 and descent angles not coincident (VGS1 Angle 3.00/TCH 35).				4100	AGEKY
4 NM Holding Pattern		AZUYI	BEXEQ	ZUVEP 2.6 NM to RW13	1 NM to RW13
6000	4000	3500	2700		
← 308°		→ 128°	→ 128°	→ 128°	→ 308°
6 NM		2.5 NM	1.5 NM	1 NM	
CATEGORY	A	B	C	D	
LNAV MDA	2200- <sup>3</sup> / <sub>4</sub>		358 (400- <sup>3</sup> / <sub>4</sub> )		
CIRCLING	2300-1	453 (500-1)	2400-1 <sup>1</sup> / <sub>2</sub> 553 (600-1 <sup>1</sup> / <sub>2</sub> )	2560-2 <sup>1</sup> / <sub>4</sub> 713 (800-2 <sup>1</sup> / <sub>4</sub> )	

NC-2, 03 OCT 2024 to 31 OCT 2024

NC-2, 03 OCT 2024 to 31 OCT 2024